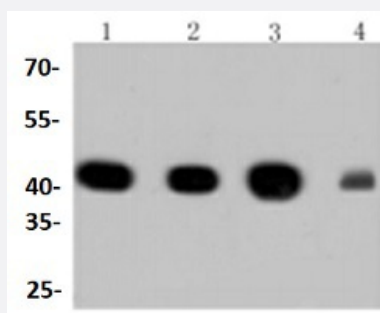


RecomAb™

ACTA2 recombinant monoclonal antibody

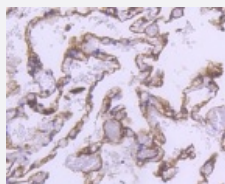
Catalog # RAB02738 Size 100 uL

Applications



Western Blot

Western blot analysis of Lane1:A549 whole cell lysate Lane2:HeLa whole cell lysate Lane3:NIH/3T3 whole cell lysate Lane4:The heart tissue lysate of Mouse with ACTA2 recombinant monoclonal antibody (Cat # RAB02738) at 1:1000 dilution.



Immunohistochemistry (Formalin/PFA-fixed paraffin-embedded sections)

Immunohistochemical analysis of paraffin-embedded human lung tissue using ACTA2 recombinant monoclonal antibody (Cat # RAB02738). Counter stained with hematoxylin.

Specification

Product Description	Rabbit recombinant monoclonal antibody raised against ACTA2.
Antibody Species	Rabbit
Immunogen	Original antibody is raised against recombinant ACTA2.
Theoretical MW (kDa)	42
Reactivity	Human, Mouse, Rat, Zebra fish
Specificity	This antibody detects endogenous levels of alpha-SMA and does not cross-react with related proteins.

Form	Liquid
Purification	Protein A purification
Isotype	IgG
Recommend Usage	Flow Cytometry (1:50-1:100) Immunohistochemistry (1:50-1:200) Western Blot (1:1000-1:5000) The optimal working dilution should be determined by the end user.
Storage Buffer	In PBS, pH7.2 (50% glycerol and 0.02% sodium azide)
Storage Instruction	Store at 4°C short term. Aliquot and store at -20°C long term. Avoid freeze-thaw cycles.
Note	This product contains sodium azide: a POISONOUS AND HAZARDOUS SUBSTANCE which should be handled by trained staff only.

Applications

- Western Blot

Western blot analysis of Lane1:A549 whole cell lysate Lane2:Hela whole cell lysate Lane3:NIH/3T3 whole cell lysate Lane4:The heart tissue lysate of Mouse with ACTA2 recombinant monoclonal antibody (Cat # RAB02738) at 1:1000 dilution.

- Immunohistochemistry (Formalin/PFA-fixed paraffin-embedded sections)

Immunohistochemical analysis of paraffin-embedded human lung tissue using ACTA2 recombinant monoclonal antibody (Cat # RAB02738). Counter stained with hematoxylin.

- Flow Cytometry

Gene Info — ACTA2

Entrez GeneID	59
Protein Accession#	P62736
Gene Name	ACTA2
Gene Alias	AAT6, ACTSA
Gene Description	actin, alpha 2, smooth muscle, aorta
Omim ID	102620

Gene Ontology

[Hyperlink](#)

Gene Summary

The protein encoded by this gene belongs to the actin family of proteins, which are highly conserved proteins that play a role in cell motility, structure and integrity. Alpha, beta and gamma actin isoforms have been identified, with alpha actins being a major constituent of the contractile apparatus, while beta and gamma actins are involved in the regulation of cell motility. This actin is an alpha actin that is found in skeletal muscle. Defects in this gene cause aortic aneurysm familial thoracic type 6. Multiple alternatively spliced variants, encoding the same protein, have been identified. [provided by RefSeq]

Other Designations

OTTHUMP00000020042|alpha 2 actin|alpha-cardiac actin|growth-inhibiting gene 46

Pathway

- [Vascular smooth muscle contraction](#)

Disease

- [Alzheimer Disease](#)
- [Cardiovascular Diseases](#)
- [Diabetes Mellitus](#)
- [Edema](#)
- [Genetic Predisposition to Disease](#)