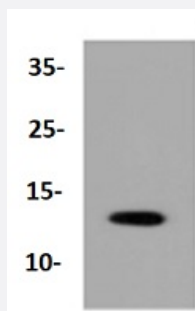


RecomAb™

SUMO1 recombinant monoclonal antibody

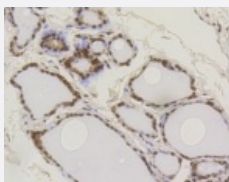
Catalog # RAB02731 Size 100 uL

Applications



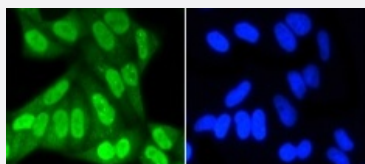
Western Blot (Cell lysate)

Western blot analysis of Lane 1: HeLa whole cell lysate with SUMO1 recombinant monoclonal antibody (Cat # RAB02731) at 1:1000 dilution.



Immunohistochemistry (Formalin/PFA-fixed paraffin-embedded sections)

Immunohistochemical analysis of paraffin-embedded human thyroid tissue using SUMO1 recombinant monoclonal antibody (Cat # RAB02731). Counter stained with hematoxylin.



Immunocytochemistry

Immunocytochemical staining of HeLa cells using SUMO1 recombinant monoclonal antibody (Cat # RAB02731) (green). The nuclear counter stain is DAPI (blue). Cells were fixed in paraformaldehyde, permeabilised with 0.25% Triton X-100/PBS.

Specification

Product Description

Rabbit recombinant monoclonal antibody raised against SUMO1.

Antibody Species	Rabbit
Immunogen	Original antibody is raised against recombinant SUMO1.
Theoretical MW (kDa)	12
Reactivity	Human, Mouse, Rat
Specificity	This antibody detects endogenous levels of SUMO1 and does not cross-react with related proteins.
Form	Liquid
Purification	Protein A purification
Isotype	IgG
Recommend Usage	Flow Cytometry (1:50-1:100) Immunocytochemistry (1:50-1:200) Immunofluorescence (1:50-1:200) Immunohistochemistry (1:50-1:200) Western Blot (1:1000-1:2000) The optimal working dilution should be determined by the end user.
Storage Buffer	In PBS, pH7.2 (50% glycerol and 0.02% sodium azide)
Storage Instruction	Store at 4°C short term. Aliquot and store at -20°C long term. Avoid freeze-thaw cycles.
Note	This product contains sodium azide: a POISONOUS AND HAZARDOUS SUBSTANCE which should be handled by trained staff only.

Applications

- Western Blot (Cell lysate)

Western blot analysis of Lane1:Hela whole cell lysate with SUMO1 recombinant monoclonal antibody (Cat # RAB02731) at 1:1000 dilution.

- Immunohistochemistry (Formalin/PFA-fixed paraffin-embedded sections)

Immunohistochemical analysis of paraffin-embedded human thyroid tissue using SUMO1 recombinant monoclonal antibody (Cat # RAB02731). Counter stained with hematoxylin.

- Immunocytochemistry

Immunocytochemical staining of HeLa cells using SUMO1 recombinant monoclonal antibody (Cat # RAB02731)(green). The nuclear counter stain is DAPI (blue). Cells were fixed in paraformaldehyde, permeabilised with 0.25% Triton *100/PBS.

- Immunofluorescence
- Flow Cytometry

Gene Info — SUMO1

Entrez GeneID	7341
Protein Accession#	P63165
Gene Name	SUMO1
Gene Alias	DAP-1, GMP1, OFC10, PIC1, SENP2, SMT3, SMT3C, SMT3H3, SUMO-1, UBL1
Gene Description	SMT3 suppressor of mif two 3 homolog 1 (S. cerevisiae)
Omim ID	601912
Gene Ontology	Hyperlink
Gene Summary	This gene encodes a protein that is a member of the SUMO (small ubiquitin-like modifier) protein family. It functions in a manner similar to ubiquitin in that it is bound to target proteins as part of a post-translational modification system. However, unlike ubiquitin which targets proteins for degradation, this protein is involved in a variety of cellular processes, such as nuclear transport, transcriptional regulation, apoptosis, and protein stability. It is not active until the last four amino acids of the carboxy-terminus have been cleaved off. Several pseudogenes have been reported for this gene. Alternate transcriptional splice variants encoding different isoforms have been characterized. [provided by RefSeq]
Other Designations	GAP modifying protein 1 SMT3 suppressor of mif two 3 homolog 1 sentrin ubiquitin-like 1 (sentrin)

Disease

- [Carcinoma](#)
- [Cardiovascular Diseases](#)
- [Cleft Lip](#)
- [Cleft Palate](#)
- [Diabetes Mellitus](#)
- [Edema](#)

- [Genetic Predisposition to Disease](#)
- [Lung Neoplasms](#)
- [Tooth Abnormalities](#)