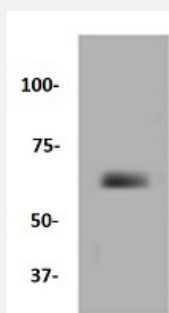


RecomAb™

MMP14 recombinant monoclonal antibody

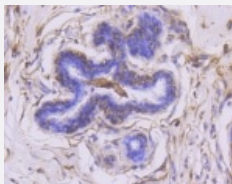
Catalog # RAB02730 Size 100 uL

Applications



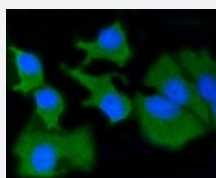
Western Blot (Tissue lysate)

Western blot analysis of Lane1: The kidney tissue lysate of Human with MMP14 recombinant monoclonal antibody (Cat # RAB02730) at 1:1000 dilution.



Immunohistochemistry (Formalin/PFA-fixed paraffin-embedded sections)

Immunohistochemical analysis of paraffin-embedded human breast carcinoma tissue using MMP14 recombinant monoclonal antibody (Cat # RAB02730). Counter stained with hematoxylin.



Immunocytochemistry

Immunocytochemical staining of BT-20 cells using MMP14 recombinant monoclonal antibody (Cat # RAB02730) (green). The nuclear counter stain is DAPI (blue). Cells were fixed in paraformaldehyde, permeabilised with 0.25% Triton X-100/PBS.

Specification

Product Description

Rabbit recombinant monoclonal antibody raised against MMP14.

Antibody Species	Rabbit
Immunogen	Original antibody is raised against recombinant MMP14.
Theoretical MW (kDa)	65
Reactivity	Human, Mouse, Rat
Specificity	This antibody detects endogenous levels of MMP14 and does not cross-react with related proteins.
Form	Liquid
Purification	Protein A purification
Isotype	IgG
Recommend Usage	Flow Cytometry (1:50-1:100) Immunocytochemistry (1:50-1:200) Immunofluorescence (1:50-1:200) Immunohistochemistry (1:50-1:200) Western Blot (1:1000) The optimal working dilution should be determined by the end user.
Storage Buffer	In PBS, pH7.2 (50% glycerol and 0.02% sodium azide)
Storage Instruction	Store at 4°C short term. Aliquot and store at -20°C long term. Avoid freeze-thaw cycles.
Note	This product contains sodium azide: a POISONOUS AND HAZARDOUS SUBSTANCE which should be handled by trained staff only.

Applications

- Western Blot (Tissue lysate)

Western blot analysis of Lane1:The kidney tissue lysate of Human with MMP14 recombinant monoclonal antibody (Cat # RAB02730) at 1:1000 dilution.

- Immunohistochemistry (Formalin/PFA-fixed paraffin-embedded sections)

Immunohistochemical analysis of paraffin-embedded human breast carcinoma tissue using MMP14 recombinant monoclonal antibody (Cat # RAB02730).Counter stained with hematoxylin.

- Immunocytochemistry

Immunocytochemical staining of BT-20 cells using MMP14 recombinant monoclonal antibody (Cat # RAB02730)(green). The nuclear counter stain is DAPI (blue). Cells were fixed in paraformaldehyde, permeabilised with 0.25% Triton *100/PBS.

- Immunofluorescence

Gene Info — MMP14

Entrez GeneID	4323
Protein Accession#	P50281
Gene Name	MMP14
Gene Alias	MMP-X1, MT1-MMP, MTMMP1
Gene Description	matrix metalloproteinase 14 (membrane-inserted)
Omim ID	600754
Gene Ontology	Hyperlink
Gene Summary	Proteins of the matrix metalloproteinase (MMP) family are involved in the breakdown of extracellular matrix in normal physiological processes, such as embryonic development, reproduction, and tissue remodeling, as well as in disease processes, such as arthritis and metastasis. Most MMP's are secreted as inactive proproteins which are activated when cleaved by extracellular proteinases. However, the protein encoded by this gene is a member of the membrane-type MMP (MT-MMP) subfamily; each member of this subfamily contains a potential transmembrane domain suggesting that these proteins are expressed at the cell surface rather than secreted. This protein activates MMP2 protein, and this activity may be involved in tumor invasion. [provided by RefSeq]
Other Designations	matrix metalloproteinase 14 matrix metalloproteinase 14 (membrane-inserted) membrane type 1 metalloproteinase membrane-type matrix metalloproteinase 1 membrane-type-1 matrix metalloproteinase

Pathway

- [GnRH signaling pathway](#)

Disease

- [Adenocarcinoma](#)
- [Bronchopulmonary Dysplasia](#)
- [Cardiovascular Diseases](#)

- [Chorioamnionitis](#)
- [Cleft Lip](#)
- [Cleft Palate](#)
- [Diabetes Mellitus](#)
- [Disease Progression](#)
- [Edema](#)
- [Esophageal Neoplasms](#)
- [Fetal Membranes](#)
- [Genetic Predisposition to Disease](#)
- [Glomerulosclerosis](#)
- [Hepatitis C](#)
- [Liver Cirrhosis](#)
- [Nephrosis](#)
- [Obstetric Labor](#)
- [Ovarian Neoplasms](#)
- [Pre-Eclampsia](#)
- [Premature Birth](#)
- [Pulmonary Disease](#)
- [Scleroderma](#)