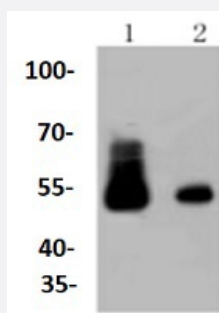


RecomAb™

# DES recombinant monoclonal antibody

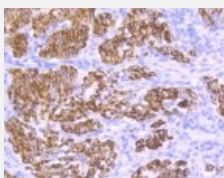
Catalog # RAB02728      Size 100 uL

## Applications



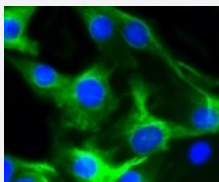
### Western Blot (Tissue lysate)

Western blot analysis of Lane1: The skeletal muscle lysate of Human  
Lane2: The heart tissue lysate of Mouse with DES recombinant monoclonal antibody (Cat # RAB02728) at 1:1000 dilution.



### Immunohistochemistry (Formalin/PFA-fixed paraffin-embedded sections)

Immunohistochemical analysis of paraffin-embedded human uterus tissue using DES recombinant monoclonal antibody (Cat # RAB02728). Counter stained with hematoxylin.



### Immunocytochemistry

Immunocytochemical staining of C2C12 cells using DES recombinant monoclonal antibody (Cat # RAB02728)(green). The nuclear counter stain is DAPI (blue). Cells were fixed in paraformaldehyde, permeabilised with 0.25% Triton \*100/PBS.

## Specification

### Product Description

Rabbit recombinant monoclonal antibody raised against DES.

<b>Antibody Species</b>	Rabbit
<b>Immunogen</b>	Original antibody is raised against recombinant DES.
<b>Theoretical MW (kDa)</b>	54
<b>Reactivity</b>	Human, Mouse, Rat, Zebra fish
<b>Specificity</b>	This antibody detects endogenous levels of Desmin and does not cross-react with related proteins.
<b>Form</b>	Liquid
<b>Purification</b>	Protein A purification
<b>Isotype</b>	IgG
<b>Recommend Usage</b>	Flow Cytometry (1:50-1:100) Immunocytochemistry (1:50-1:200) Immunofluorescence (1:50-1:200) Immunohistochemistry (1:50-1:200) Western Blot (1:1000-1:5000) The optimal working dilution should be determined by the end user.
<b>Storage Buffer</b>	In PBS, pH7.2 (50% glycerol and 0.02% sodium azide)
<b>Storage Instruction</b>	Store at 4°C short term. Aliquot and store at -20°C long term. Avoid freeze-thaw cycles.
<b>Note</b>	This product contains sodium azide: a POISONOUS AND HAZARDOUS SUBSTANCE which should be handled by trained staff only.

## Applications

- Western Blot (Tissue lysate)

Western blot analysis of Lane1:The skeletal muscle lysate of Human Lane2:The heart tissue lysate of Mouse with DES recombinant monoclonal antibody (Cat # RAB02728) at 1:1000 dilution.

- Immunohistochemistry (Formalin/PFA-fixed paraffin-embedded sections)

Immunohistochemical analysis of paraffin-embedded human uterus tissue using DES recombinant monoclonal antibody (Cat # RAB02728). Counter stained with hematoxylin.

- Immunocytochemistry

Immunocytochemical staining of C2C12 cells using DES recombinant monoclonal antibody (Cat # RAB02728)(green). The nuclear counter stain is DAPI (blue). Cells were fixed in paraformaldehyde, permeabilised with 0.25% Triton \*100/PBS.

- Immunofluorescence
- Flow Cytometry

## Gene Info — DES

Entrez GeneID [1674](#)

Protein Accession# [P17661](#)

Gene Name DES

Gene Alias CMD1I, CSM1, CSM2, FLJ12025, FLJ39719, FLJ41013, FLJ41793

Gene Description desmin

Omim ID [125660 601419 604765](#)

Gene Ontology [Hyperlink](#)

**Gene Summary** This gene encodes a muscle-specific class III intermediate filament. Homopolymers of this protein form a stable intracytoplasmic filamentous network connecting myofibrils to each other and to the plasma membrane. Mutations in this gene are associated with desmin-related myopathy, a familial cardiac and skeletal myopathy (CSM), and with distal myopathies. [provided by RefSeq]

**Other Designations** OTTHUMP00000064865|intermediate filament protein

## Pathway

- [Arrhythmogenic right ventricular cardiomyopathy \(ARVC\)](#)
- [Hypertrophic cardiomyopathy \(HCM\)](#)

## Disease

- [Cardiomyopathy](#)
- [Cardiovascular Diseases](#)
- [Diabetes Mellitus](#)
- [Edema](#)