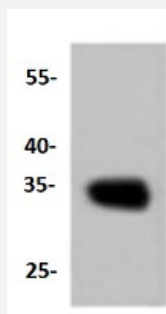


RecomAb™

# CNN1 recombinant monoclonal antibody

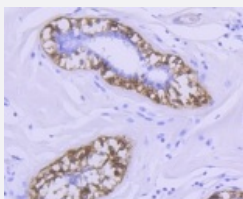
Catalog # RAB02725      Size 100 uL

## Applications



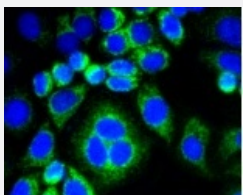
### Western Blot (Cell lysate)

Western blot analysis of Lane1:Hela whole cell lysate with CNN1 recombinant monoclonal antibody (Cat # RAB02725) at 1:1000 dilution.



### Immunohistochemistry (Formalin/PFA-fixed paraffin-embedded sections)

Immunohistochemical analysis of paraffin-embedded human breast carcinoma tissue using CNN1 recombinant monoclonal antibody (Cat # RAB02725). Counter stained with hematoxylin.



### Immunocytochemistry

Immunocytochemical staining of HepG2 cells using CNN1 recombinant monoclonal antibody (Cat # RAB02725)(green). The nuclear counter stain is DAPI (blue). Cells were fixed in paraformaldehyde, permeabilised with 0.25% Triton \*100/PBS.

## Specification

### Product Description

Rabbit recombinant monoclonal antibody raised against CNN1.

Antibody Species	Rabbit
Immunogen	Original antibody is raised against recombinant CNN1.
Theoretical MW (kDa)	33
Reactivity	Dog, Human, Mouse, Pig, Rat
Specificity	This antibody detects endogenous levels of CNN1 and does not cross-react with related proteins.
Form	Liquid
Purification	Protein A purification
Isotype	IgG
Recommend Usage	Immunocytochemistry (1:50-1:200) Immunofluorescence (1:50-1:200) Immunohistochemistry (1:50-1:200) Western Blot (1:1000-1:2000) The optimal working dilution should be determined by the end user.
Storage Buffer	In PBS, pH7.2 (50% glycerol and 0.02% sodium azide)
Storage Instruction	Store at 4°C short term. Aliquot and store at -20°C long term. Avoid freeze-thaw cycles.
Note	This product contains sodium azide: a POISONOUS AND HAZARDOUS SUBSTANCE which should be handled by trained staff only.

## Applications

- Western Blot (Cell lysate)

Western blot analysis of Lane1:Hela whole cell lysate with CNN1 recombinant monoclonal antibody (Cat # RAB02725) at 1:1000 dilution.

- Immunohistochemistry (Formalin/PFA-fixed paraffin-embedded sections)

Immunohistochemical analysis of paraffin-embedded human breast carcinoma tissue using CNN1 recombinant monoclonal antibody (Cat # RAB02725). Counter stained with hematoxylin.

- Immunocytochemistry

Immunocytochemical staining of HepG2 cells using CNN1 recombinant monoclonal antibody (Cat # RAB02725)(green). The nuclear counter stain is DAPI (blue). Cells were fixed in paraformaldehyde, permeabilised with 0.25% Triton \*100/PBS.

- Immunofluorescence

## Gene Info — CNN1

Entrez GeneID	<a href="#">1264</a>
Protein Accession#	<a href="#">P51911</a>
Gene Name	CNN1
Gene Alias	SMCC, Sm-Calp
Gene Description	calponin 1, basic, smooth muscle
Omim ID	<a href="#">600806</a>
Gene Ontology	<a href="#">Hyperlink</a>
Gene Summary	basic
Other Designations	calponins, basic

## Disease

- [Cardiovascular Diseases](#)
- [Diabetes Mellitus](#)
- [Edema](#)