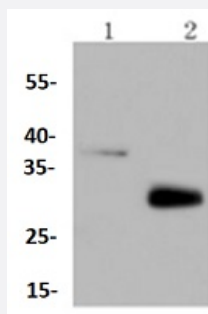


RecomAb™

MCL1 recombinant monoclonal antibody

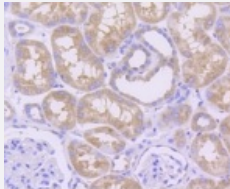
Catalog # RAB02724 Size 100 uL

Applications



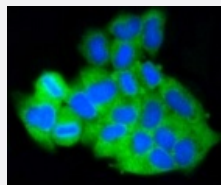
Western Blot

Western blot analysis of Lane1:Raji whole cell lysate Lane2:The heart tissue lysate of Mouse with MCL1 recombinant monoclonal antibody (Cat # RAB02724) at 1:1000 dilution.



Immunohistochemistry (Formalin/PFA-fixed paraffin-embedded sections)

Immunohistochemical analysis of paraffin-embedded human kidney tissue using MCL1 recombinant monoclonal antibody (Cat # RAB02724).Counter stained with hematoxylin.



Immunocytochemistry

Immunocytochemical staining of HeLa cells using MCL1 recombinant monoclonal antibody (Cat # RAB02724)(green). The nuclear counter stain is DAPI (blue). Cells were fixed in paraformaldehyde, permeabilised with 0.25% Triton *100/PBS.

Specification

Product Description

Rabbit recombinant monoclonal antibody raised against MCL1.

Antibody Species	Rabbit
Immunogen	Original antibody is raised against recombinant MCL1.
Theoretical MW (kDa)	29, 37
Reactivity	Human, Mouse, Rat
Specificity	This antibody detects endogenous levels of MCL1 and does not cross-react with related proteins.
Form	Liquid
Purification	Protein A purification
Isotype	IgG
Recommend Usage	Flow Cytometry (1:50-1:100) Immunocytochemistry (1:50-1:200) Immunofluorescence (1:50-1:200) Immunohistochemistry (1:50-1:200) Western Blot (1:1000) The optimal working dilution should be determined by the end user.
Storage Buffer	In PBS, pH7.2 (50% glycerol and 0.02% sodium azide)
Storage Instruction	Store at 4°C short term. Aliquot and store at -20°C long term. Avoid freeze-thaw cycles.
Note	This product contains sodium azide: a POISONOUS AND HAZARDOUS SUBSTANCE which should be handled by trained staff only.

Applications

- Western Blot

Western blot analysis of Lane1:Raji whole cell lysate Lane2:The heart tissue lysate of Mouse with MCL1 recombinant monoclonal antibody (Cat # RAB02724) at 1:1000 dilution.

- Immunohistochemistry (Formalin/PFA-fixed paraffin-embedded sections)

Immunohistochemical analysis of paraffin-embedded human kidney tissue using MCL1 recombinant monoclonal antibody (Cat # RAB02724).Counter stained with hematoxylin.

- Immunocytochemistry

Immunocytochemical staining of HeLa cells using MCL1 recombinant monoclonal antibody (Cat # RAB02724)(green). The nuclear counter stain is DAPI (blue). Cells were fixed in paraformaldehyde, permeabilised with 0.25% Triton *100/PBS.

- Immunofluorescence
- Flow Cytometry

Gene Info — MCL1

Entrez GeneID	4170
Protein Accession#	Q07820
Gene Name	MCL1
Gene Alias	BCL2L3, EAT, MCL1L, MCL1S, MGC104264, MGC1839, TM
Gene Description	myeloid cell leukemia sequence 1 (BCL2-related)
Omim ID	159552
Gene Ontology	Hyperlink
Gene Summary	The protein encoded by this gene belongs to the Bcl-2 family. Alternative splicing occurs at this locus and two transcript variants encoding distinct isoforms have been identified. The longer gene product (isoform 1) enhances cell survival by inhibiting apoptosis while the alternatively spliced shorter gene product (isoform 2) promotes apoptosis and is death-inducing. [provided by RefSeq]
Other Designations	OTTHUMP00000032794 OTTHUMP00000032795 induced myeloid leukemia cell differentiation protein Mcl-1 myeloid cell leukemia sequence 1 myeloid cell leukemia sequence 1, isoform 1

Disease

- [Bile Duct Neoplasms](#)
- [Cardiovascular Diseases](#)
- [Cholangiocarcinoma](#)
- [Diabetes Mellitus](#)
- [Edema](#)
- [Genetic Predisposition to Disease](#)
- [Narcolepsy](#)
- [Tuberculosis](#)