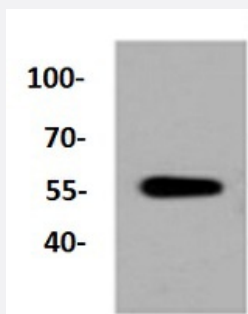


RecomAb™

# ALDH1A1 recombinant monoclonal antibody

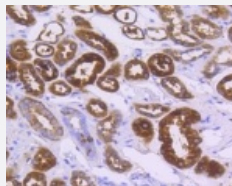
Catalog # RAB02721      Size 100 uL

## Applications



### Western Blot (Tissue lysate)

Western blot analysis of Lane1: The lung tissue lysate of Mouse with ALDH1A1 recombinant monoclonal antibody (Cat # RAB02721) at 1:1000 dilution.



### Immunohistochemistry (Formalin/PFA-fixed paraffin-embedded sections)

Immunohistochemical analysis of paraffin-embedded human kidney tissue using ALDH1A1 recombinant monoclonal antibody (Cat # RAB02721). Counter stained with hematoxylin.

## Specification

Product Description	Rabbit recombinant monoclonal antibody raised against ALDH1A1.
Antibody Species	Rabbit
Immunogen	Original antibody is raised against recombinant ALDH1A1.
Theoretical MW (kDa)	54
Reactivity	Human, Mouse, Rat
Specificity	This antibody detects endogenous levels of ALDH1A1 and does not cross-react with related proteins.

Form	Liquid
Purification	Protein A purification
Isotype	IgG
Recommend Usage	Immunohistochemistry (1:50-1:200) Western Blot (1:1000-1:2000) The optimal working dilution should be determined by the end user.
Storage Buffer	In PBS, pH7.2 (50% glycerol and 0.02% sodium azide)
Storage Instruction	Store at 4°C short term. Aliquot and store at -20°C long term. Avoid freeze-thaw cycles.
Note	This product contains sodium azide: a POISONOUS AND HAZARDOUS SUBSTANCE which should be handled by trained staff only.

## Applications

- Western Blot (Tissue lysate)

Western blot analysis of Lane1:The lung tissue lysate of Mouse with ALDH1A1 recombinant monoclonal antibody (Cat # RAB02721) at 1:1000 dilution.

- Immunohistochemistry (Formalin/PFA-fixed paraffin-embedded sections)

Immunohistochemical analysis of paraffin-embedded human kidney tissue using ALDH1A1 recombinant monoclonal antibody (Cat # RAB02721). Counter stained with hematoxylin.

## Gene Info — ALDH1A1

Entrez GeneID	<a href="#">216</a>
Protein Accession#	<a href="#">P00352</a>
Gene Name	ALDH1A1
Gene Alias	ALDC, ALDH-E1, ALDH1, ALDH11, MGC2318, PUMB1, RALDH1
Gene Description	aldehyde dehydrogenase 1 family, member A1
Gene Ontology	<a href="#">Hyperlink</a>

**Gene Summary**

This protein belongs to the aldehyde dehydrogenases family of proteins. Aldehyde dehydrogenase is the second enzyme of the major oxidative pathway of alcohol metabolism. Two major liver isoforms of this enzyme, cytosolic and mitochondrial, can be distinguished by their electrophoretic mobilities, kinetic properties, and subcellular localizations. Most Caucasians have two major isozymes, while approximately 50% of Orientals have only the cytosolic isozyme, missing the mitochondrial isozyme. A remarkably higher frequency of acute alcohol intoxication among Orientals than among Caucasians could be related to the absence of the mitochondrial isozyme. This gene encodes a cytosolic isoform, which has a high affinity for aldehydes. [provided by RefSeq]

**Other Designations**

ALDH class 1|acetaldehyde dehydrogenase 1|aldehyde dehydrogenase 1, soluble|aldehyde dehydrogenase 1A1|aldehyde dehydrogenase, liver cytosolic|retinal dehydrogenase 1|retinaldehyde dehydrogenase 1

**Pathway**

- [Metabolic pathways](#)
- [Retinol metabolism](#)

**Disease**

- [Alcoholism](#)
- [Breast cancer](#)
- [Breast Neoplasms](#)
- [Carcinoma](#)
- [Chromosome Deletion](#)
- [Cleft Lip](#)
- [Cleft Palate](#)
- [Disease Models](#)
- [Drug Toxicity](#)
- [Genetic Predisposition to Disease](#)
- [Kidney Failure](#)
- [Lymphoma](#)
- [Neoplasms](#)

- [Ovarian cancer](#)
- [Ovarian Neoplasms](#)
- [Schizophrenia](#)
- [Tobacco Use Disorder](#)