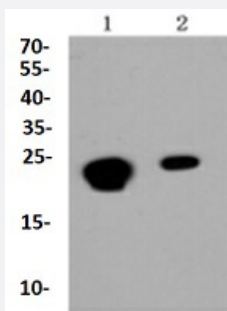


RecomAb™

## CBX5 recombinant monoclonal antibody

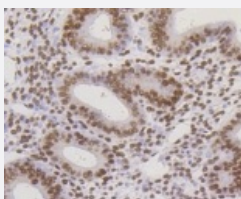
Catalog # RAB02715      Size 100 uL

### Applications



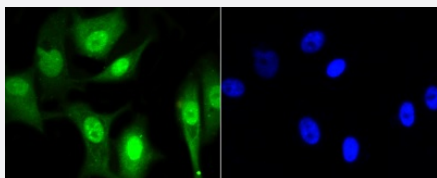
#### Western Blot (Cell lysate)

Western blot analysis of Lane1:MCF7 whole cell lysate Lane2:Hela whole cell lysate with CBX5 recombinant monoclonal antibody (Cat # RAB02715) at 1:1000 dilution.



#### Immunohistochemistry (Formalin/PFA-fixed paraffin-embedded sections)

Immunohistochemical analysis of paraffin-embedded human uterus tissue using CBX5 recombinant monoclonal antibody (Cat # RAB02715). Counter stained with hematoxylin.



#### Immunocytochemistry

Immunocytochemical staining of MCF7 cells using CBX5 recombinant monoclonal antibody (Cat # RAB02715). Cells were fixed in paraformaldehyde, permeabilised with 0.25% Triton \*100/PBS.

### Specification

#### Product Description

Rabbit recombinant monoclonal antibody raised against CBX5.

Antibody Species	Rabbit
Immunogen	Original antibody is raised against recombinant CBX5.
Theoretical MW (kDa)	25
Reactivity	Human, Mouse, Rat
Specificity	This antibody detects endogenous levels of CBX5 and does not cross-react with related proteins.
Form	Liquid
Purification	Protein A purification
Isotype	IgG
Recommend Usage	Flow Cytometry (1:50-1:100) Immunocytochemistry (1:50-1:200) Immunofluorescence (1:50-1:200) Immunohistochemistry (1:50-1:200) Western Blot (1:1000-1:5000) The optimal working dilution should be determined by the end user.
Storage Buffer	In PBS, pH7.2 (50% glycerol and 0.02% sodium azide)
Storage Instruction	Store at 4°C short term. Aliquot and store at -20°C long term. Avoid freeze-thaw cycles.
Note	This product contains sodium azide: a POISONOUS AND HAZARDOUS SUBSTANCE which should be handled by trained staff only.

## Applications

- Western Blot (Cell lysate)

Western blot analysis of Lane1:MCF7 whole cell lysate Lane2:Hela whole cell lysate with CBX5 recombinant monoclonal antibody (Cat # RAB02715) at 1:1000 dilution.

- Immunohistochemistry (Formalin/PFA-fixed paraffin-embedded sections)

Immunohistochemical analysis of paraffin-embedded human uterus tissue using CBX5 recombinant monoclonal antibody (Cat # RAB02715). Counter stained with hematoxylin.

- Immunocytochemistry

Immunocytochemical staining of MCF7 cells using CBX5 recombinant monoclonal antibody (Cat # RAB02715). Cells were fixed in paraformaldehyde, permeabilised with 0.25% Triton \*100/PBS.

- Immunofluorescence
- Flow Cytometry

## Gene Info — CBX5

**Entrez GeneID** [23468](#)

**Protein Accession#** [P45973](#)

**Gene Name** CBX5

**Gene Alias** HP1, HP1A

**Gene Description** chromobox homolog 5 (HP1 alpha homolog, Drosophila)

**Omim ID** [604478](#)

**Gene Ontology** [Hyperlink](#)

**Gene Summary** This gene encodes a highly conserved nonhistone protein, which is a member of the heterochromatin protein family. The protein is enriched in the heterochromatin and associated with centromeres. The protein has a single N-terminal chromodomain which can bind to histone proteins via methylated lysine residues, and a C-terminal chromo shadow-domain (CSD) which is responsible for the homodimerization and interaction with a number of chromatin-associated nonhistone proteins. The encoded product is involved in the formation of functional kinetochore through interaction with essential kinetochore proteins. The gene has a pseudogene located on chromosome 3. Multiple alternatively spliced variants, encoding the same protein, have been identified. [provided by RefSeq]

**Other Designations** HP1-ALPHA|HP1Hs alpha|antigen p25|heterochromatin protein 1 homolog alpha|heterochromatin protein 1-alpha