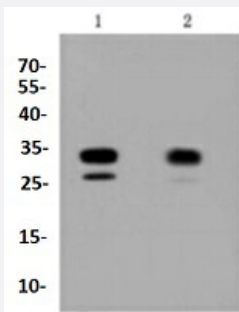


RecomAb™

CDK2 recombinant monoclonal antibody

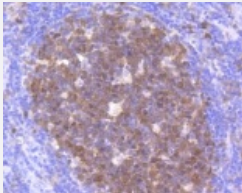
Catalog # RAB02714 Size 100 uL

Applications



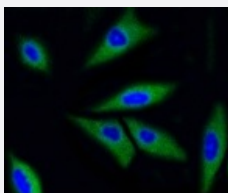
Western Blot (Cell lysate)

Western blot analysis of Lane1:A549 whole cell lysate Lane2:F9 whole cell lysate with CDK2 recombinant monoclonal antibody (Cat # RAB02714) at 1:1000 dilution.



Immunohistochemistry (Formalin/PFA-fixed paraffin-embedded sections)

Immunohistochemical analysis of paraffin-embedded human tonsil tissue using CDK2 recombinant monoclonal antibody (Cat # RAB02714). Counter stained with hematoxylin.



Immunocytochemistry

Immunocytochemical staining of SH-SY-5Y cells using CDK2 recombinant monoclonal antibody (Cat # RAB02714)(green). The nuclear counter stain is DAPI (blue). Cells were fixed in paraformaldehyde, permeabilised with 0.25% Triton *100/PBS.

Specification

Product Description

Rabbit recombinant monoclonal antibody raised against CDK2.

| | |
|----------------------|--|
| Antibody Species | Rabbit |
| Immunogen | Original antibody is raised against recombinant CDK2. |
| Theoretical MW (kDa) | 34 |
| Reactivity | Human, Mouse, Rat |
| Specificity | This antibody detects endogenous levels of CDK2 and does not cross-react with related proteins. |
| Form | Liquid |
| Purification | Protein A purification |
| Isotype | IgG |
| Recommend Usage | Immunocytochemistry (1:50-1:200) Immunofluorescence (1:50-1:200) Immunohistochemistry (1:50-1:200) Western Blot (1:1000-1:5000) The optimal working dilution should be determined by the end user. |
| Storage Buffer | In PBS, pH7.2 (50% glycerol and 0.02% sodium azide) |
| Storage Instruction | Store at 4°C short term. Aliquot and store at -20°C long term. Avoid freeze-thaw cycles. |
| Note | This product contains sodium azide: a POISONOUS AND HAZARDOUS SUBSTANCE which should be handled by trained staff only. |

Applications

- Western Blot (Cell lysate)

Western blot analysis of Lane1:A549 whole cell lysate Lane2:F9 whole cell lysate with CDK2 recombinant monoclonal antibody (Cat # RAB02714) at 1:1000 dilution.

- Immunohistochemistry (Formalin/PFA-fixed paraffin-embedded sections)

Immunohistochemical analysis of paraffin-embedded human tonsil tissue using CDK2 recombinant monoclonal antibody (Cat # RAB02714). Counter stained with hematoxylin.

- Immunocytochemistry

Immunocytochemical staining of SH-SY-5Y cells using CDK2 recombinant monoclonal antibody (Cat # RAB02714)(green). The nuclear counter stain is DAPI (blue). Cells were fixed in paraformaldehyde, permeabilised with 0.25% Triton *100/PBS.

- Immunofluorescence

Gene Info — CDK2

Entrez GeneID [1017](#)

Protein Accession# [P24941](#)

Gene Name CDK2

Gene Alias p33(CDK2)

Gene Description cyclin-dependent kinase 2

Omim ID [116953](#)

Gene Ontology [Hyperlink](#)

Gene Summary

The protein encoded by this gene is a member of the Ser/Thr protein kinase family. This protein kinase is highly similar to the gene products of *S. cerevisiae* cdc28, and *S. pombe* cdc2. It is a catalytic subunit of the cyclin-dependent protein kinase complex, whose activity is restricted to the G1-S phase, and essential for cell cycle G1/S phase transition. This protein associates with and regulated by the regulatory subunits of the complex including cyclin A or E, CDK inhibitor p21Cip1 (CDKN1A) and p27Kip1 (CDKN1B). Its activity is also regulated by its protein phosphorylation. Two alternatively spliced variants and multiple transcription initiation sites of this gene have been reported. [provided by RefSeq]

Other Designations cdc2-related protein kinase|cell division kinase 2|p33 protein kinase

Pathway

- [Cell cycle](#)
- [p53 signaling pathway](#)
- [Pathways in cancer](#)
- [Prostate cancer](#)
- [Small cell lung cancer](#)

Disease

- [Azoospermia](#)
- [Breast cancer](#)
- [Breast Neoplasms](#)

- [Chromosome Aberrations](#)
- [Diabetes Mellitus](#)
- [Genetic Predisposition to Disease](#)
- [Kidney Failure](#)
- [Lymphoma](#)
- [Neoplasm Invasiveness](#)
- [Ovarian cancer](#)
- [Ovarian Neoplasms](#)