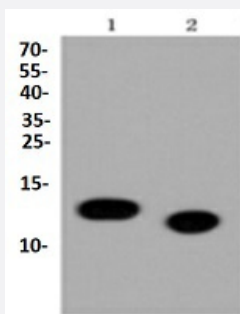


RecomAb™

# H4C1 (Acetyl K5) recombinant monoclonal antibody

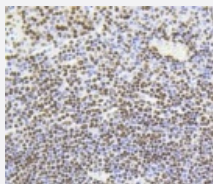
Catalog # RAB02709      Size 100 uL

## Applications



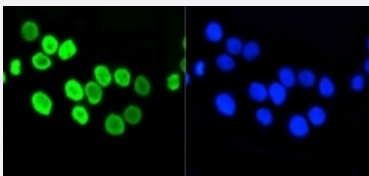
### Western Blot (Cell lysate)

Western blot analysis of Lane1: CRC whole cell lysate Lane2: Hela whole cell lysate with H4C1 (Acetyl K5) recombinant monoclonal antibody (Cat # RAB02709) at 1:1000 dilution.



### Immunohistochemistry (Formalin/PFA-fixed paraffin-embedded sections)

Immunohistochemical analysis of paraffin-embedded human tonsil tissue using H4C1 (Acetyl K5) recombinant monoclonal antibody (Cat # RAB02709). Counter stained with hematoxylin.



### Immunocytochemistry

Immunocytochemical staining of CRC cells using H4C1 (Acetyl K5) recombinant monoclonal antibody (Cat # RAB02709) (green). The nuclear counter stain is DAPI (blue). Cells were fixed in paraformaldehyde, permeabilised with 0.25% Triton X-100/PBS.

## Specification

### Product Description

Rabbit recombinant monoclonal antibody raised against H4C1.

<b>Antibody Species</b>	Rabbit
<b>Immunogen</b>	Original antibody is raised against recombinant H4C1.
<b>Theoretical MW (kDa)</b>	11
<b>Reactivity</b>	Human, Mouse, Rat
<b>Specificity</b>	This antibody detects endogenous levels of Histone H4 protein only when acetylated at Lys5.
<b>Form</b>	Liquid
<b>Purification</b>	Protein A purification
<b>Isotype</b>	IgG
<b>Recommend Usage</b>	Immunocytochemistry (1:50-1:200) Immunofluorescence (1:50-1:200) Immunohistochemistry (1:50-1:200) Western Blot (1:1000-1:2000) The optimal working dilution should be determined by the end user.
<b>Storage Buffer</b>	In PBS, pH7.2 (50% glycerol and 0.02% sodium azide)
<b>Storage Instruction</b>	Store at 4°C short term. Aliquot and store at -20°C long term. Avoid freeze-thaw cycles.
<b>Note</b>	This product contains sodium azide: a POISONOUS AND HAZARDOUS SUBSTANCE which should be handled by trained staff only.

## Applications

- Western Blot (Cell lysate)

Western blot analysis of Lane1:CRC whole cell lysate Lane2:Hela whole cell lysate with H4C1 (Acetyl K5) recombinant monoclonal antibody (Cat # RAB02709) at 1:1000 dilution.

- Immunohistochemistry (Formalin/PFA-fixed paraffin-embedded sections)

Immunohistochemical analysis of paraffin-embedded human tonsil tissue using H4C1 (Acetyl K5) recombinant monoclonal antibody (Cat # RAB02709). Counter stained with hematoxylin.

- Immunocytochemistry

Immunocytochemical staining of CRC cells using H4C1 (Acetyl K5) recombinant monoclonal antibody (Cat # RAB02709) (green). The nuclear counter stain is DAPI (blue). Cells were fixed in paraformaldehyde, permeabilised with 0.25% Triton X-100/PBS.

- Immunofluorescence

## Gene Info — HIST1H4A

Entrez GeneID	<a href="#">8359</a>
Protein Accession#	<a href="#">P62805</a>
Gene Name	HIST1H4A
Gene Alias	H4/a, H4FA
Gene Description	histone cluster 1, H4a
Omim ID	<a href="#">602822</a>
Gene Ontology	<a href="#">Hyperlink</a>
Gene Summary	<p>Histones are basic nuclear proteins that are responsible for the nucleosome structure of the chromosomal fiber in eukaryotes. Two molecules of each of the four core histones (H2A, H2B, H3, and H4) form an octamer, around which approximately 146 bp of DNA is wrapped in repeating units, called nucleosomes. The linker histone, H1, interacts with linker DNA between nucleosomes and functions in the compaction of chromatin into higher order structures. This gene is intronless and encodes a member of the histone H4 family. Transcripts from this gene lack polyA tails but instead contain a palindromic termination element. This gene is found in the large histone gene cluster on chromosome 6. [provided by RefSeq]</p>
Other Designations	H4 histone family, member A histone 1, H4a

## Pathway

- [Systemic lupus erythematosus](#)