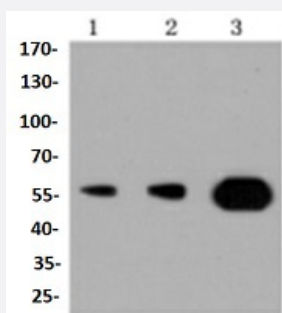


RecomAb™

# PIK3R3 recombinant monoclonal antibody

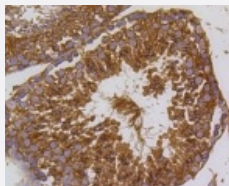
Catalog # RAB02696      Size 100 uL

## Applications



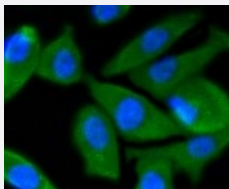
### Western Blot

Western blot analysis of Lane1:MCF7 whole cell lysate Lane2:Jurkat whole cell lysate Lane3:The testis tissue lysate of Mouse with PIK3R3 recombinant monoclonal antibody (Cat # RAB02696) at 1:1000 dilution.



### Immunohistochemistry (Formalin/PFA-fixed paraffin-embedded sections)

Immunohistochemical analysis of paraffin-embedded mouse testis tissue using PIK3R3 recombinant monoclonal antibody (Cat # RAB02696). Counter stained with hematoxylin.



### Immunocytochemistry

Immunocytochemical staining of PC-3M cells using PIK3R3 recombinant monoclonal antibody (Cat # RAB02696)(green). The nuclear counter stain is DAPI (blue). Cells were fixed in paraformaldehyde, permeabilised with 0.25% Triton \*100/PBS.

## Specification

### Product Description

Rabbit recombinant monoclonal antibody raised against PIK3R3.

<b>Antibody Species</b>	Rabbit
<b>Immunogen</b>	Original antibody is raised against recombinant PIK3R3.
<b>Theoretical MW (kDa)</b>	55
<b>Reactivity</b>	Human, Mouse, Rat
<b>Specificity</b>	This antibody detects endogenous levels of PI3K p55gamma and does not cross-react with related proteins.
<b>Form</b>	Liquid
<b>Purification</b>	Protein A purification
<b>Isotype</b>	IgG
<b>Recommend Usage</b>	Immunocytochemistry (1:50-1:200) Immunofluorescence (1:50-1:200) Immunohistochemistry (1:200-1:500) Western Blot (1:1000-1:10000) The optimal working dilution should be determined by the end user.
<b>Storage Buffer</b>	In PBS, pH7.2 (50% glycerol and 0.02% sodium azide)
<b>Storage Instruction</b>	Store at 4°C short term. Aliquot and store at -20°C long term. Avoid freeze-thaw cycles.
<b>Note</b>	This product contains sodium azide: a POISONOUS AND HAZARDOUS SUBSTANCE which should be handled by trained staff only.

## Applications

- Western Blot

Western blot analysis of Lane1:MCF7 whole cell lysate Lane2:Jurkat whole cell lysate Lane3:The testis tissue lysate of Mouse with PIK3R3 recombinant monoclonal antibody (Cat # RAB02696) at 1:1000 dilution.

- Immunohistochemistry (Formalin/PFA-fixed paraffin-embedded sections)

Immunohistochemical analysis of paraffin-embedded mouse testis tissue using PIK3R3 recombinant monoclonal antibody (Cat # RAB02696). Counter stained with hematoxylin.

- Immunocytochemistry

Immunocytochemical staining of PC-3M cells using PIK3R3 recombinant monoclonal antibody (Cat # RAB02696)(green). The nuclear counter stain is DAPI (blue). Cells were fixed in paraformaldehyde, permeabilised with 0.25% Triton \*100/PBS.

- Immunofluorescence

## Gene Info — PIK3R3

Entrez GeneID	<a href="#">8503</a>
Protein Accession#	<a href="#">Q92569</a>
Gene Name	PIK3R3
Gene Alias	DKFZp686P05226, FLJ41892, p55, p55-GAMMA
Gene Description	phosphoinositide-3-kinase, regulatory subunit 3 (gamma)
Omim ID	<a href="#">606076</a>
Gene Ontology	<a href="#">Hyperlink</a>
Gene Summary	O
Other Designations	100% homology to SWISS-PROT Q92569 OTTHUMP00000009783 OTTHUMP00000009786 phosphatidylinositol 3-kinase, regulatory subunit, polypeptide 3 (p55, gamma) phosphoinositide-3-kinase, regulatory subunit 3 (p55, gamma) phosphoinositide-3-kinase, regulatory subun

## Pathway

- [Acute myeloid leukemia](#)
- [Apoptosis](#)
- [B cell receptor signaling pathway](#)
- [Chemokine signaling pathway](#)
- [Chronic myeloid leukemia](#)
- [Colorectal cancer](#)
- [Endometrial cancer](#)
- [ErbB signaling pathway](#)
- [Fc epsilon RI signaling pathway](#)
- [Fc gamma R-mediated phagocytosis](#)

- [Focal adhesion](#)
- [Glioma](#)
- [Insulin signaling pathway](#)
- [Jak-STAT signaling pathway](#)
- [Leukocyte transendothelial migration](#)
- [Melanoma](#)
- [mTOR signaling pathway](#)
- [Natural killer cell mediated cytotoxicity](#)
- [Neurotrophin signaling pathway](#)
- [Non-small cell lung cancer](#)
- [Pancreatic cancer](#)
- [Pathways in cancer](#)
- [Phosphatidylinositol signaling system](#)
- [Prostate cancer](#)
- [Regulation of actin cytoskeleton](#)
- [Renal cell carcinoma](#)
- [Small cell lung cancer](#)
- [T cell receptor signaling pathway](#)
- [Toll-like receptor signaling pathway](#)
- [Type II diabetes mellitus](#)
- [VEGF signaling pathway](#)

## Disease

- [Genetic Predisposition to Disease](#)
- [Prostatic Neoplasms](#)
- [Tobacco Use Disorder](#)