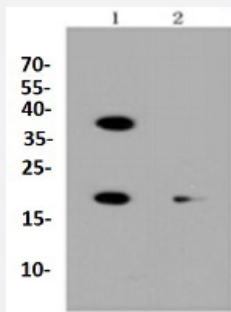


RecomAb™

## BBC3 recombinant monoclonal antibody

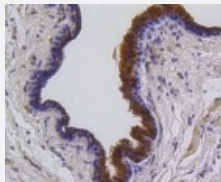
Catalog # RAB02693      Size 100 uL

### Applications



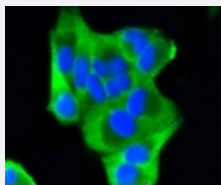
#### Western Blot (Cell lysate)

Western blot analysis of Lane1:HeLa whole cell lysate Lane2:K562 whole cell lysate with BBC3 recombinant monoclonal antibody (Cat # RAB02693) at 1:1000 dilution.



#### Immunohistochemistry (Formalin/PFA-fixed paraffin-embedded sections)

Immunohistochemical analysis of paraffin-embedded human breast carcinoma tissue using BBC3 recombinant monoclonal antibody (Cat # RAB02693). Counter stained with hematoxylin.



#### Immunocytochemistry

Immunocytochemical staining of HeLa cells using BBC3 recombinant monoclonal antibody (Cat # RAB02693)(green). The nuclear counter stain is DAPI (blue). Cells were fixed in paraformaldehyde, permeabilised with 0.25% Triton \*100/PBS.

### Specification

#### Product Description

Rabbit recombinant monoclonal antibody raised against BBC3.

<b>Antibody Species</b>	Rabbit
<b>Immunogen</b>	Original antibody is raised against recombinant BBC3.
<b>Theoretical MW (kDa)</b>	20
<b>Reactivity</b>	Human, Mouse, Rat
<b>Specificity</b>	This antibody detects endogenous levels of PUMA and does not cross-react with related proteins.
<b>Form</b>	Liquid
<b>Purification</b>	Protein A purification
<b>Isotype</b>	IgG
<b>Recommend Usage</b>	Flow Cytometry (1:50-1:100) Immunocytochemistry (1:50-1:200) Immunofluorescence (1:50-1:200) Immunohistochemistry (1:200-1:500) Western Blot (1:1000-1:2000) The optimal working dilution should be determined by the end user.
<b>Storage Buffer</b>	In PBS, pH7.2 (50% glycerol and 0.02% sodium azide)
<b>Storage Instruction</b>	Store at 4°C short term. Aliquot and store at -20°C long term. Avoid freeze-thaw cycles.
<b>Note</b>	This product contains sodium azide: a POISONOUS AND HAZARDOUS SUBSTANCE which should be handled by trained staff only.

## Applications

- Western Blot (Cell lysate)

Western blot analysis of Lane1:Hela whole cell lysate Lane2:K562 whole cell lysate with BBC3 recombinant monoclonal antibody (Cat # RAB02693) at 1:1000 dilution.

- Immunohistochemistry (Formalin/PFA-fixed paraffin-embedded sections)

Immunohistochemical analysis of paraffin-embedded human breast carcinoma tissue using BBC3 recombinant monoclonal antibody (Cat # RAB02693). Counter stained with hematoxylin.

- Immunocytochemistry

Immunocytochemical staining of HeLa cells using BBC3 recombinant monoclonal antibody (Cat # RAB02693)(green). The nuclear counter stain is DAPI (blue). Cells were fixed in paraformaldehyde, permeabilised with 0.25% Triton \*100/PBS.

- Immunofluorescence
- Flow Cytometry

## Gene Info — BBC3

Entrez GeneID	<a href="#">27113</a>
Protein Accession#	<a href="#">Q9BXH1</a>
Gene Name	BBC3
Gene Alias	JFY1, PUMA
Gene Description	BCL2 binding component 3
Omim ID	<a href="#">605854</a>
Gene Ontology	<a href="#">Hyperlink</a>
Other Designations	Bcl-2 binding component 3

## Pathway

- [p53 signaling pathway](#)