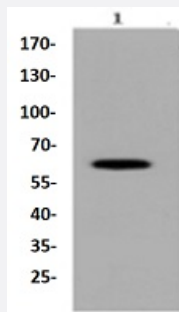


RecomAb™

PTPN6 recombinant monoclonal antibody

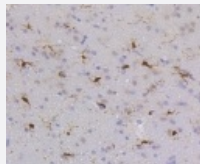
Catalog # RAB02687 Size 100 uL

Applications



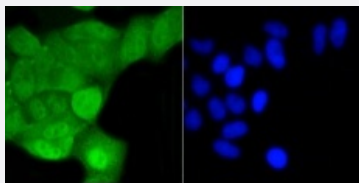
Western Blot (Cell lysate)

Western blot analysis of Lane1:Raji whole cell lysate of Mouse with PTPN6 recombinant monoclonal antibody (Cat # RAB02687) at 1:500 dilution.



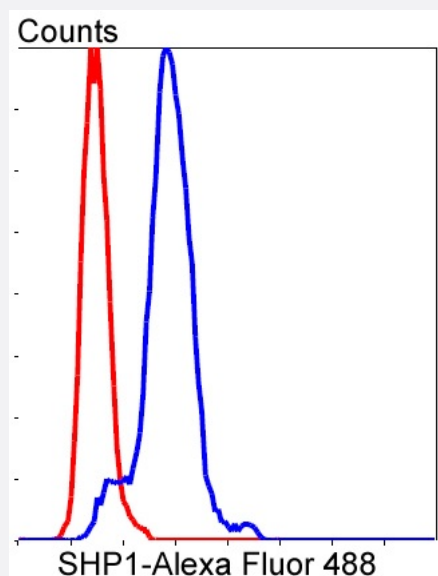
Immunohistochemistry (Formalin/PFA-fixed paraffin-embedded sections)

Immunohistochemical analysis of paraffin-embedded rat brain tissue using PTPN6 recombinant monoclonal antibody (Cat # RAB02687). Counter stained with hematoxylin.



Immunocytochemistry

Immunocytochemical staining of HeLa cells using PTPN6 recombinant monoclonal antibody (Cat # RAB02687)(green). The nuclear counter stain is DAPI (blue). Cells were fixed in paraformaldehyde, permeabilised with 0.25% Triton *100/PBS.



Flow Cytometry

Flow cytometric analysis of Hela cells with PTPN6 recombinant monoclonal antibody (Cat # RAB02687) at 1/50 dilution (blue) compared with an unlabelled control (cells without incubation with primary antibody; red). Alexa Fluor 488-conjugated goat anti rabbit IgG was used as the secondary antibody.

Specification

Product Description	Rabbit recombinant monoclonal antibody raised against PTPN6.
Antibody Species	Rabbit
Immunogen	Original antibody is raised against recombinant PTPN6.
Theoretical MW (kDa)	68
Reactivity	Human, Mouse, Rat
Specificity	This antibody detects endogenous levels of SHP1 and does not cross-react with related proteins.
Form	Liquid
Purification	Protein A purification
Isotype	IgG
Recommend Usage	Flow Cytometry (1:50-1:100) Immunocytochemistry (1:50-1:200) Immunofluorescence (1:50-1:200) Immunohistochemistry (1:50-1:500) Western Blot (1:500-1:1000) The optimal working dilution should be determined by the end user.
Storage Buffer	In PBS, pH7.2 (50% glycerol and 0.02% sodium azide)

Storage Instruction

Store at 4°C short term.
Aliquot and store at -20°C long term.
Avoid freeze-thaw cycles.

Note

This product contains sodium azide: a POISONOUS AND HAZARDOUS SUBSTANCE which should be handled by trained staff only.

Applications

- Western Blot (Cell lysate)

Western blot analysis of Lane1:Raji whole cell lysate of Mouse with PTPN6 recombinant monoclonal antibody (Cat # RAB02687) at 1:500 dilution.

- Immunohistochemistry (Formalin/PFA-fixed paraffin-embedded sections)

Immunohistochemical analysis of paraffin-embedded rat brain tissue using PTPN6 recombinant monoclonal antibody (Cat # RAB02687). Counter stained with hematoxylin.

- Immunocytochemistry

Immunocytochemical staining of HeLa cells using PTPN6 recombinant monoclonal antibody (Cat # RAB02687)(green). The nuclear counter stain is DAPI (blue). Cells were fixed in paraformaldehyde, permeabilised with 0.25% Triton *100/PBS.

- Immunofluorescence

- Flow Cytometry

Flow cytometric analysis of Hela cells with PTPN6 recombinant monoclonal antibody (Cat # RAB02687) at 1/50 dilution (blue) compared with an unlabelled control (cells without incubation with primary antibody; red). Alexa Fluor 488-conjugated goat anti rabbit IgG was used as the secondary antibody.

Gene Info — PTPN6

Entrez GeneID[5777](#)**Protein Accession#**[P29350](#)**Gene Name**

PTPN6

Gene Alias

HCP, HCPH, HPTP1C, PTP-1C, SH-PTP1, SHP-1, SHP-1L, SHP1

Gene Description

protein tyrosine phosphatase, non-receptor type 6

Omim ID[176883](#)**Gene Ontology**[Hyperlink](#)

Gene Summary

The protein encoded by this gene is a member of the protein tyrosine phosphatase (PTP) family. PTPs are known to be signaling molecules that regulate a variety of cellular processes including cell growth, differentiation, mitotic cycle, and oncogenic transformation. N-terminal part of this PTP contains two tandem Src homolog (SH2) domains, which act as protein phospho-tyrosine binding domains, and mediate the interaction of this PTP with its substrates. This PTP is expressed primarily in hematopoietic cells, and functions as an important regulator of multiple signaling pathways in hematopoietic cells. This PTP has been shown to interact with, and dephosphorylate a wide spectrum of phospho-proteins involved in hematopoietic cell signaling. Multiple alternatively spliced variants of this gene, which encode distinct isoforms, have been reported. [provided by RefSeq

Other Designations

hematopoietic cell phosphatase|hematopoietic cell protein-tyrosine phosphatase|protein-tyrosine phosphatase 1C

Pathway

- [Adherens junction](#)
- [B cell receptor signaling pathway](#)
- [Jak-STAT signaling pathway](#)
- [Natural killer cell mediated cytotoxicity](#)
- [T cell receptor signaling pathway](#)

Disease

- [Alzheimer disease](#)
- [Cerebral Amyloid Angiopathy](#)
- [Genetic Predisposition to Disease](#)
- [Lupus Erythematosus](#)
- [Neuroblastoma](#)