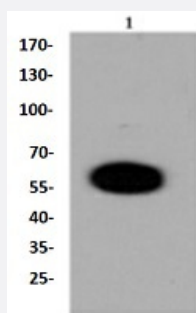


RecomAb™

DUSP6 recombinant monoclonal antibody

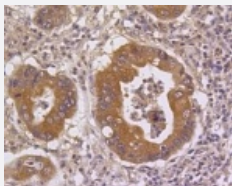
Catalog # RAB02686 Size 100 uL

Applications



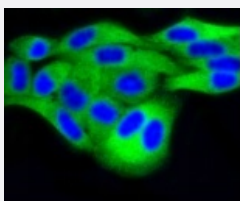
Western Blot (Cell lysate)

Western blot analysis of Lane1: The pancreas tissue lysate of Mouse with DUSP6 recombinant monoclonal antibody (Cat # RAB02686) at 1:1000 dilution.



Immunohistochemistry (Formalin/PFA-fixed paraffin-embedded sections)

Immunohistochemical analysis of paraffin-embedded human gastric carcinoma tissue using DUSP6 recombinant monoclonal antibody (Cat # RAB02686). Counter stained with hematoxylin.



Immunocytochemistry

Immunocytochemical staining of HeLa cells using DUSP6 recombinant monoclonal antibody (Cat # RAB02686)(green). The nuclear counter stain is DAPI (blue). Cells were fixed in paraformaldehyde, permeabilised with 0.25% Triton *100/PBS.

Specification

Product Description

Rabbit recombinant monoclonal antibody raised against DUSP6.

Antibody Species	Rabbit
Immunogen	Original antibody is raised against recombinant DUSP6.
Theoretical MW (kDa)	42
Reactivity	Human, Mouse, Rat
Specificity	This antibody detects endogenous levels of DUSP6 and does not cross-react with related proteins.
Form	Liquid
Purification	Protein A purification
Isotype	IgG
Recommend Usage	Flow Cytometry (1:50-1:100) Immunocytochemistry (1:50-1:200) Immunofluorescence (1:50-1:200) Immunohistochemistry (1:200-1:500) Western Blot (1:1000-1:5000) The optimal working dilution should be determined by the end user.
Storage Buffer	In PBS, pH7.2 (50% glycerol and 0.02% sodium azide)
Storage Instruction	Store at 4°C short term. Aliquot and store at -20°C long term. Avoid freeze-thaw cycles.
Note	This product contains sodium azide: a POISONOUS AND HAZARDOUS SUBSTANCE which should be handled by trained staff only.

Applications

- Western Blot (Cell lysate)

Western blot analysis of Lane1:The pancreas tissue lysate of Mouse with DUSP6 recombinant monoclonal antibody (Cat # RAB02686) at 1:1000 dilution.

- Immunohistochemistry (Formalin/PFA-fixed paraffin-embedded sections)

Immunohistochemical analysis of paraffin-embedded human gastric carcinoma tissue using DUSP6 recombinant monoclonal antibody (Cat # RAB02686). Counter stained with hematoxylin.

- Immunocytochemistry

Immunocytochemical staining of HeLa cells using DUSP6 recombinant monoclonal antibody (Cat # RAB02686)(green). The nuclear counter stain is DAPI (blue). Cells were fixed in paraformaldehyde, permeabilised with 0.25% Triton *100/PBS.

- Immunofluorescence
- Flow Cytometry

Gene Info — DUSP6

Entrez GeneID [1848](#)

Protein Accession# [Q16828](#)

Gene Name DUSP6

Gene Alias MKP3, PYST1

Gene Description dual specificity phosphatase 6

Omim ID [602748](#)

Gene Ontology [Hyperlink](#)

Gene Summary

The protein encoded by this gene is a member of the dual specificity protein phosphatase subfamily. These phosphatases inactivate their target kinases by dephosphorylating both the phosphoserine/threonine and phosphotyrosine residues. They negatively regulate members of the mitogen-activated protein (MAP) kinase superfamily (MAPK/ERK, SAPK/JNK, p38), which are associated with cellular proliferation and differentiation. Different members of the family of dual specificity phosphatases show distinct substrate specificities for various MAP kinases, different tissue distribution and subcellular localization, and different modes of inducibility of their expression by extracellular stimuli. This gene product inactivates ERK2, is expressed in a variety of tissues with the highest levels in heart and pancreas, and unlike most other members of this family, is localized in the cytoplasm. Two transcript variants encoding different isoforms have been found for this gene. [provided by RefSeq]

Other Designations MAP kinase phosphatase 3|serine/threonine specific protein phosphatase

Pathway

- [MAPK signaling pathway](#)

Disease

- [Bipolar Disorder](#)
- [Cardiovascular Diseases](#)

- [Diabetes Mellitus](#)
- [Edema](#)
- [Genetic Predisposition to Disease](#)
- [Kidney Failure](#)