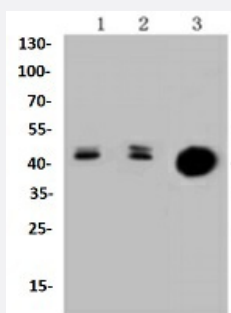


RecomAb™

KRT20 recombinant monoclonal antibody

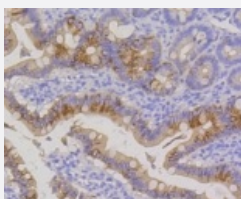
Catalog # RAB02675 Size 100 uL

Applications



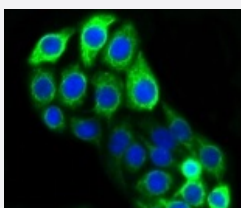
Western Blot (Cell lysate)

Western blot analysis of Lane1:Lovo whole cell lysate Lane2:HCT116 whole cell lysate Lane3:CRC whole cell lysate with KRT20 recombinant monoclonal antibody (Cat # RAB02675) at 1:1000 dilution.



Immunohistochemistry (Formalin/PFA-fixed paraffin-embedded sections)

Immunohistochemical analysis of paraffin-embedded rat small intestine tissue using KRT20 recombinant monoclonal antibody (Cat # RAB02675). Counter stained with hematoxylin.



Immunocytochemistry

Immunocytochemical staining of CRC cells using KRT20 recombinant monoclonal antibody (Cat # RAB02675)(green). The nuclear counter stain is DAPI (blue). Cells were fixed in paraformaldehyde, permeabilised with 0.25% Triton *100/PBS.

Specification

Product Description

Rabbit recombinant monoclonal antibody raised against KRT20.

Antibody Species	Rabbit
Immunogen	Original antibody is raised against recombinant KRT20.
Theoretical MW (kDa)	48
Reactivity	Human, Rat
Specificity	This antibody detects endogenous levels of Cytokeratin 20 and does not cross-react with related proteins.
Form	Liquid
Purification	Protein A purification
Isotype	IgG
Recommend Usage	Flow Cytometry (1:10-1:100) Immunocytochemistry (1:50-1:200) Immunofluorescence (1:50-1:200) Immunohistochemistry (1:50-1:200) Immunoprecipitation (1:50-1:200) Western Blot (1:1000-1:5000) The optimal working dilution should be determined by the end user.
Storage Buffer	In PBS , pH7.2 (0.02% sodium azide and 50% glycerol)
Storage Instruction	Store at 4°C short term. Aliquot and store at -20°C long term. Avoid freeze-thaw cycles.
Note	This product contains sodium azide: a POISONOUS AND HAZARDOUS SUBSTANCE which should be handled by trained staff only.

Applications

- Western Blot (Cell lysate)

Western blot analysis of Lane1:Lovo whole cell lysate Lane2:HCT116 whole cell lysate Lane3:CRC whole cell lysate with KRT20 recombinant monoclonal antibody (Cat # RAB02675) at 1:1000 dilution.

- Immunohistochemistry (Formalin/PFA-fixed paraffin-embedded sections)

Immunohistochemical analysis of paraffin-embedded rat small intestine tissue using KRT20 recombinant monoclonal antibody (Cat # RAB02675). Counter stained with hematoxylin.

- Immunocytochemistry

Immunocytochemical staining of CRC cells using KRT20 recombinant monoclonal antibody (Cat # RAB02675)(green). The nuclear counter stain is DAPI (blue). Cells were fixed in paraformaldehyde, permeabilised with 0.25% Triton *100/PBS.

- Immunofluorescence

- Immunoprecipitation

- Flow Cytometry

Gene Info — KRT20

Entrez GeneID [54474](#)

Protein Accession# [P35900](#)

Gene Name KRT20

Gene Alias CD20, CK20, K20, KRT21, MGC35423

Gene Description keratin 20

Omim ID [608218](#)

Gene Ontology [Hyperlink](#)

Gene Summary The protein encoded by this gene is a member of the keratin family. The keratins are intermediate filament proteins responsible for the structural integrity of epithelial cells and are subdivided into cytokeratins and hair keratins. The type I cytokeratins consist of acidic proteins which are arranged in pairs of heterotypic keratin chains. This cytokeratin is a major cellular protein of mature enterocytes and goblet cells and is specifically expressed in the gastric and intestinal mucosa. The type I cytokeratin genes are clustered in a region of chromosome 17q12-q21. [provided by RefSeq]

Other Designations cytokeratin 20|keratin, type I cytoskeletal 20

Disease

- [Genetic Predisposition to Disease](#)

- [Growth Disorders](#)