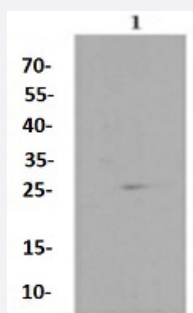


RecomAb™

RPS3 recombinant monoclonal antibody

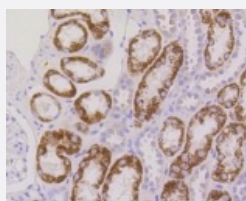
Catalog # RAB02668 Size 100 uL

Applications



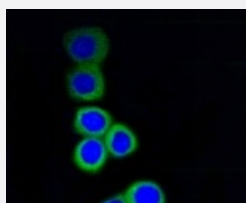
Western Blot (Cell lysate)

Western blot analysis of Lane1:PC12 whole cell lysate with RPS3 recombinant monoclonal antibody (Cat # RAB02668) at 1:1000 dilution.



Immunohistochemistry (Formalin/PFA-fixed paraffin-embedded sections)

Immunohistochemical analysis of paraffin-embedded human kidney tissue using RPS3 recombinant monoclonal antibody (Cat # RAB02668). Counter stained with hematoxylin.



Immunocytochemistry

Immunocytochemical staining of N2A cells using RPS3 recombinant monoclonal antibody (Cat # RAB02668)(green). The nuclear counter stain is DAPI (blue). Cells were fixed in paraformaldehyde, permeabilised with 0.25% Triton *100/PBS.

Specification

Product Description

Rabbit recombinant monoclonal antibody raised against RPS3.

Antibody Species	Rabbit
Immunogen	Original antibody is raised against recombinant RPS3.
Theoretical MW (kDa)	26
Reactivity	Human, Mouse, Rat
Specificity	This antibody detects endogenous levels of RPS3 and does not cross-react with related proteins.
Form	Liquid
Purification	Protein A purification
Isotype	IgG
Recommend Usage	Immunocytochemistry (1:50-1:200) Immunofluorescence (1:50-1:200) Immunohistochemistry (1:50-1:200) Western Blot (1:1000-1:5000) The optimal working dilution should be determined by the end user.
Storage Buffer	In PBS , pH7.2 (0.02% sodium azide and 50% glycerol)
Storage Instruction	Store at 4°C short term. Aliquot and store at -20°C long term. Avoid freeze-thaw cycles.
Note	This product contains sodium azide: a POISONOUS AND HAZARDOUS SUBSTANCE which should be handled by trained staff only.

Applications

- Western Blot (Cell lysate)

Western blot analysis of Lane1:PC12 whole cell lysate with RPS3 recombinant monoclonal antibody (Cat # RAB02668) at 1:1000 dilution.

- Immunohistochemistry (Formalin/PFA-fixed paraffin-embedded sections)

Immunohistochemical analysis of paraffin-embedded human kidney tissue using RPS3 recombinant monoclonal antibody (Cat # RAB02668). Counter stained with hematoxylin.

- Immunocytochemistry

Immunocytochemical staining of N2A cells using RPS3 recombinant monoclonal antibody (Cat # RAB02668)(green). The nuclear counter stain is DAPI (blue). Cells were fixed in paraformaldehyde, permeabilised with 0.25% Triton *100/PBS.

- Immunofluorescence

Gene Info — RPS3

Entrez GeneID	6188
Protein Accession#	P23396
Gene Name	RPS3
Gene Alias	FLJ26283, FLJ27450, MGC87870
Gene Description	ribosomal protein S3
Omim ID	600454
Gene Ontology	Hyperlink

Gene Summary

Ribosomes, the organelles that catalyze protein synthesis, consist of a small 40S subunit and a large 60S subunit. Together these subunits are composed of 4 RNA species and approximately 80 structurally distinct proteins. This gene encodes a ribosomal protein that is a component of the 40 S subunit, where it forms part of the domain where translation is initiated. The protein belongs to the S3P family of ribosomal proteins. Studies of the mouse and rat proteins have demonstrated that the protein has an extraribosomal role as an endonuclease involved in the repair of UV-induced DNA damage. The protein appears to be located in both the cytoplasm and nucleus but not in the nucleolus. Higher levels of expression of this gene in colon adenocarcinomas and adenomatous polyps compared to adjacent normal colonic mucosa have been observed. This gene is co-transcribed with the small nucleolar RNA genes U15A and U15B, which are located in its first and fifth introns, respectively. As is typical for genes encoding ribosomal proteins, there are multiple processed pseudogenes of this gene dispersed through the genome. [provided by RefSeq]

Other Designations	40S ribosomal protein S3 MR-90 ribosomal protein S3
--------------------	---

Pathway

- [Ribosome](#)