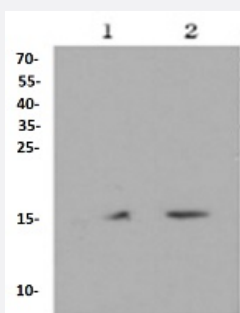


RecomAb™

# H3C1 (mono methyl K18) recombinant monoclonal antibody

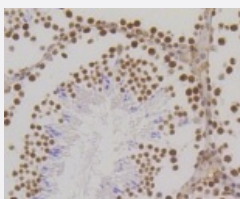
Catalog # RAB02659      Size 100 uL

## Applications



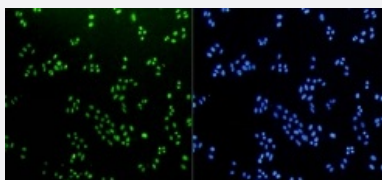
### Western Blot (Cell lysate)

Western blot analysis of Lane1:Hela whole cell lysate Lane2:HepG2 whole cell lysate with H3C1 (mono methyl K18) recombinant monoclonal antibody (Cat # RAB02659) at 1:1000 dilution.



### Immunohistochemistry (Formalin/PFA-fixed paraffin-embedded sections)

Immunohistochemical analysis of paraffin-embedded mouse testis tissue using H3C1 (mono methyl K18) recombinant monoclonal antibody (Cat # RAB02659). Counter stained with hematoxylin.



### Immunocytochemistry

Immunocytochemical staining of HepG2 cells using H3C1 (mono methyl K18) recombinant monoclonal antibody (Cat # RAB02659)(green). The nuclear counter stain is DAPI (blue). Cells were fixed in paraformaldehyde, permeabilised with 0.25% Triton \*100/PBS.

## Specification

### Product Description

Rabbit recombinant monoclonal antibody raised against H3C1.

Antibody Species	Rabbit
Immunogen	Original antibody is raised against recombinant H3C1.
Theoretical MW (kDa)	17
Reactivity	Human, Mouse, Rat
Specificity	This antibody detects endogenous levels of Histone H3 protein only when Methyl at Lys18.
Form	Liquid
Purification	Protein A purification
Isotype	IgG
Recommend Usage	Immunocytochemistry (1:50-1:200) Immunofluorescence (1:50-1:200) Immunohistochemistry (1:50-1:200) Western Blot (1:1000-1:5000) The optimal working dilution should be determined by the end user.
Storage Buffer	In PBS , pH7.2 (0.02% sodium azide and 50% glycerol)
Storage Instruction	Store at 4°C short term. Aliquot and store at -20°C long term. Avoid freeze-thaw cycles.
Note	This product contains sodium azide: a POISONOUS AND HAZARDOUS SUBSTANCE which should be handled by trained staff only.

## Applications

- Western Blot (Cell lysate)

Western blot analysis of Lane1:Hela whole cell lysate Lane2:HepG2 whole cell lysate with H3C1 (mono methyl K18) recombinant monoclonal antibody (Cat # RAB02659) at 1:1000 dilution.

- Immunohistochemistry (Formalin/PFA-fixed paraffin-embedded sections)

Immunohistochemical analysis of paraffin-embedded mouse testis tissue using H3C1 (mono methyl K18) recombinant monoclonal antibody (Cat # RAB02659). Counter stained with hematoxylin.

- Immunocytochemistry

Immunocytochemical staining of HepG2 cells using H3C1 (mono methyl K18) recombinant monoclonal antibody (Cat # RAB02659)(green). The nuclear counter stain is DAPI (blue). Cells were fixed in paraformaldehyde, permeabilised with 0.25% Triton \*100/PBS.

- Immunofluorescence

## Gene Info — HIST1H3A

Entrez GeneID	<a href="#">8350</a>
Protein Accession#	<a href="#">P68431</a>
Gene Name	HIST1H3A
Gene Alias	H3/A, H3FA
Gene Description	histone cluster 1, H3a
Omim ID	<a href="#">602810</a>
Gene Ontology	<a href="#">Hyperlink</a>
Gene Summary	<p>Histones are basic nuclear proteins that are responsible for the nucleosome structure of the chromosomal fiber in eukaryotes. This structure consists of approximately 146 bp of DNA wrapped around a nucleosome, an octamer composed of pairs of each of the four core histones (H2A, H2B, H3, and H4). The chromatin fiber is further compacted through the interaction of a linker histone, H1, with the DNA between the nucleosomes to form higher order chromatin structures. This gene is intronless and encodes a member of the histone H3 family. Transcripts from this gene lack polyA tails; instead, they contain a palindromic termination element. This gene is found in the large histone gene cluster on chromosome 6p22-p21.3. [provided by RefSeq]</p>
Other Designations	H3 histone family, member A histone 1, H3a

## Pathway

- [Systemic lupus erythematosus](#)