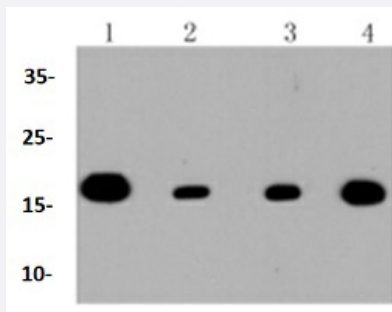


RecomAb™

# TOMM20 recombinant monoclonal antibody

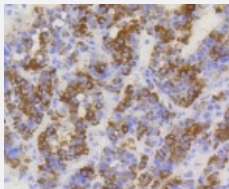
Catalog # RAB02649      Size 100 uL

## Applications



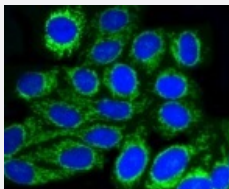
### Western Blot (Cell lysate)

Western blot analysis of Lane1:Hela whole cell lysate Lane2:MCF7 whole cell lysate Lane3:F9 whole cell lysate Lane4:PC12 whole cell lysate with TOMM20 recombinant monoclonal antibody (Cat # RAB02649) at 1:1000 dilution.



### Immunohistochemistry (Formalin/PFA-fixed paraffin-embedded sections)

Immunohistochemical analysis of paraffin-embedded human liver cancer tissue using TOMM20 recombinant monoclonal antibody (Cat # RAB02649). Counter stained with hematoxylin.



### Immunocytochemistry

Immunocytochemical staining of HepG2 cells using TOMM20 recombinant monoclonal antibody (Cat # RAB02649)(green). The nuclear counter stain is DAPI (blue). Cells were fixed in paraformaldehyde, permeabilised with 0.25% Triton \*100/PBS.

## Specification

### Product Description

Rabbit recombinant monoclonal antibody raised against human TOMM20.

<b>Antibody Species</b>	Rabbit
<b>Immunogen</b>	Original antibody is raised against recombinant fusion protein containing a sequence corresponding to amino acids 20-145 of human TOMM20 (NP_055580.1).
<b>Theoretical MW (kDa)</b>	16
<b>Reactivity</b>	Human, Mouse, Rat
<b>Specificity</b>	This antibody detects endogenous levels of TOM20 protein.
<b>Form</b>	Liquid
<b>Purification</b>	Affinity chromatography using epitope-specific immunogen and the purity is > 95% (by SDS-PAGE).
<b>Isotype</b>	IgG
<b>Recommend Usage</b>	Flow Cytometry (1:50-1:100) Immunocytochemistry (1:50-1:200) Immunofluorescence (1:50-1:200) Immunohistochemistry (1:50-1:200) Immunoprecipitation (1:20-1:50) Western Blot (1:500-1:2000) The optimal working dilution should be determined by the end user.
<b>Storage Buffer</b>	In PBS , pH7.2 (0.02% sodium azide and 50% glycerol)
<b>Storage Instruction</b>	Store at 4°C short term. Aliquot and store at -20°C long term. Avoid freeze-thaw cycles.
<b>Note</b>	This product contains sodium azide: a POISONOUS AND HAZARDOUS SUBSTANCE which should be handled by trained staff only.

## Applications

- Western Blot (Cell lysate)

Western blot analysis of Lane1:Hela whole cell lysate Lane2:MCF7 whole cell lysate Lane3:F9 whole cell lysate Lane4:PC12 whole cell lysate with TOMM20 recombinant monoclonal antibody (Cat # RAB02649) at 1:1000 dilution.

- Immunohistochemistry (Formalin/PFA-fixed paraffin-embedded sections)

Immunohistochemical analysis of paraffin-embedded human liver cancer tissue using TOMM20 recombinant monoclonal antibody (Cat # RAB02649). Counter stained with hematoxylin.

- Immunocytochemistry

Immunocytochemical staining of HepG2 cells using TOMM20 recombinant monoclonal antibody (Cat # RAB02649)(green). The nuclear counter stain is DAPI (blue). Cells were fixed in paraformaldehyde, permeabilised with 0.25% Triton \*100/PBS.

- Immunofluorescence

- Immunoprecipitation

- Flow Cytometry

## Gene Info — TOMM20

Entrez GeneID	<a href="#">9804</a>
---------------	----------------------

Protein Accession#	<a href="#">Q15388</a>
--------------------	------------------------

Gene Name	TOMM20
-----------	--------

Gene Alias	KIAA0016, MAS20, MGC117367, MOM19, TOM20
------------	--

Gene Description	translocase of outer mitochondrial membrane 20 homolog (yeast)
------------------	--

Omim ID	<a href="#">601848</a>
---------	------------------------

Gene Ontology	<a href="#">Hyperlink</a>
---------------	---------------------------

Other Designations	OTTHUMP00000037593 translocase of outer mitochondrial membrane 20 homolog translocase of outer mitochondrial membrane 20 homolog type II
--------------------	--