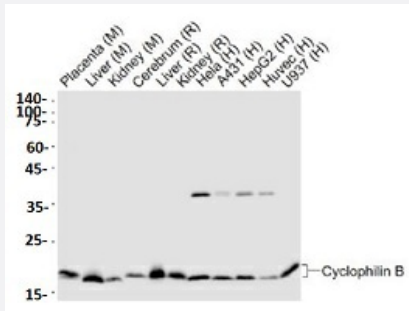


RecomAb™

PPIB recombinant monoclonal antibody

Catalog # RAB02642 Size 100 uL

Applications



Western Blot (Tissue lysate)

Western blot analysis with PPIB recombinant monoclonal antibody (Cat # RAB02642) at 1:1000 dilution.

Specification

Product Description	Rabbit recombinant monoclonal antibody raised against human PPIB.
Antibody Species	Rabbit
Immunogen	Original antibody is raised against recombinant human PPIB.
Theoretical MW (kDa)	18
Reactivity	Human, Mouse, Rat
Specificity	This antibody detects endogenous levels of Cyclophilin B protein.
Form	Liquid
Purification	Protein A purification
Isotype	IgG
Recommend Usage	Western Blot (1:500-1:2000) The optimal working dilution should be determined by the end user.
Storage Buffer	In 0.01M TBS, pH7.4 (1% BSA, 0.03% Proclin300 and 50% Glycerol)

Storage Instruction

Store at 4°C short term.
Aliquot and store at -20°C long term.
Avoid freeze-thaw cycles.

Applications

- Western Blot (Tissue lysate)

Western blot analysis with PPIB recombinant monoclonal antibody (Cat # RAB02642) at 1:1000 dilution.

Gene Info — PPIB

Entrez GeneID [5479](#)

Protein Accession# [P23284](#)

Gene Name PPIB

Gene Alias CYP-S1, CYPB, MGC14109, MGC2224, SCYLP

Gene Description peptidylprolyl isomerase B (cyclophilin B)

Omim ID [123841](#)

Gene Ontology [Hyperlink](#)

Gene Summary The protein encoded by this gene is a cyclosporine-binding protein and is mainly located within the endoplasmic reticulum. It is associated with the secretory pathway and released in biological fluids. This protein can bind to cells derived from T- and B-lymphocytes, and may regulate cyclosporine A-mediated immunosuppression. [provided by RefSeq]

Other Designations PPlase|S-cyclophilin|cyclophilin B|cyclophilin-like protein|peptidyl-prolyl cis-trans isomerase B|peptidylprolyl isomerase B|rotamase

Disease

- [Disease Progression](#)
- [Disease Susceptibility](#)
- [HIV Infections](#)