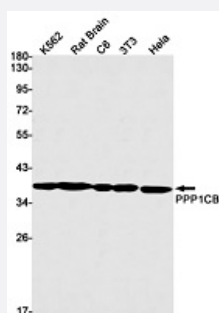


RecomAb™

# PPP1CB recombinant monoclonal antibody

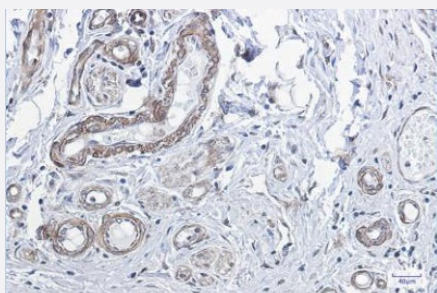
Catalog # RAB02628      Size 100 uL

## Applications



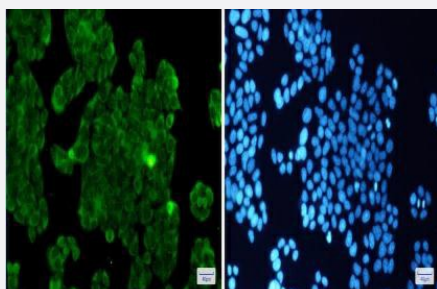
### Western Blot

Western blot analysis of K562, rat Brain, C6, 3T3, HeLa lysates with PPP1CB recombinant monoclonal antibody (Cat # RAB02628).



### Immunohistochemistry (Formalin/PFA-fixed paraffin-embedded sections)

Immunohistochemical analysis of paraffin-embedded Human colon cancer using PPP1CB recombinant monoclonal antibody (Cat # RAB02628). High-pressure and temperature Sodium Citrate pH 6.0 was used for antigen retrieval.



### Immunocytochemistry

Immunocytochemical staining of human HeLa cells using PPP1CB recombinant monoclonal antibody (Cat # RAB02628)(green). The nuclear counter stain is DAPI (blue).

## Specification

### Product Description

Rabbit recombinant monoclonal antibody raised against human PPP1CB.

Antibody Species	Rabbit
Immunogen	Original antibody is raised against synthetic peptide, corresponding to human PPP1CB.
Theoretical MW (kDa)	37
Reactivity	Human, Mouse, Rat
Specificity	Detects endogenous levels of PPP1CB protein.
Form	Liquid
Purification	Affinity chromatography using epitope-specific immunogen and the purity is > 95% (by SDS-PAGE).
Concentration	0.3 mg/ml
Isotype	IgG
Recommend Usage	Immunocytochemistry (1:50-1:200) Immunofluorescence (1:50-1:200) Immunohistochemistry (1:50-1:100) Western Blot (1:500-1:1000)
Storage Buffer	In 50mM Tris-Glycine, pH 7.4 (0.15M NaCl, 40% Glycerol, 0.01% Sodium azide and 0.05% BSA)
Storage Instruction	Store at 4°C short term. Aliquot and store at -20°C long term. Avoid freeze-thaw cycles.
Note	This product contains sodium azide: a POISONOUS AND HAZARDOUS SUBSTANCE which should be handled by trained staff only.

## Applications

- Western Blot

Western blot analysis of K562, rat Brain, C6, 3T3, Hela lysates with PPP1CB recombinant monoclonal antibody (Cat # RAB02628).

- Immunohistochemistry (Formalin/PFA-fixed paraffin-embedded sections)

Immunohistochemical analysis of paraffin-embedded Human colon cancer using PPP1CB recombinant monoclonal antibody (Cat # RAB02628). High-pressure and temperature Sodium Citrate pH 6.0 was used for antigen retrieval.

- Immunohistochemistry

- Immunocytochemistry

Immunocytochemical staining of human HeLa cells using PPP1CB recombinant monoclonal antibody (Cat # RAB02628)(green). The nuclear counter stain is DAPI (blue).

## Gene Info — PPP1CB

**Entrez GeneID** [5500](#)

**Protein Accession#** [P62140](#)

**Gene Name** PPP1CB

**Gene Alias** MGC3672, PP-1B, PPP1CD

**Gene Description** protein phosphatase 1, catalytic subunit, beta isoform

**Omim ID** [600590](#)

**Gene Ontology** [Hyperlink](#)

**Gene Summary** The protein encoded by this gene is one of the three catalytic subunits of protein phosphatase 1 (PP1). PP1 is a serine/threonine specific protein phosphatase known to be involved in the regulation of a variety of cellular processes, such as cell division, glycogen metabolism, muscle contractility, protein synthesis, and HIV-1 viral transcription. Mouse studies suggest that PP1 functions as a suppressor of learning and memory. Two alternatively spliced transcript variants encoding distinct isoforms have been observed. [provided by RefSeq]

**Other Designations** protein phosphatase 1, catalytic subunit, beta|protein phosphatase 1, catalytic subunit, delta isoform|protein phosphatase 1-beta|protein phosphatase 1-delta|serine/threonine protein phosphatase PP1-beta catalytic subunit

## Pathway

- [Focal adhesion](#)
- [Insulin signaling pathway](#)
- [Long-term potentiation](#)
- [Regulation of actin cytoskeleton](#)
- [Vascular smooth muscle contraction](#)

## Disease

- [Breast cancer](#)
- [Breast Neoplasms](#)
- [Genetic Predisposition to Disease](#)