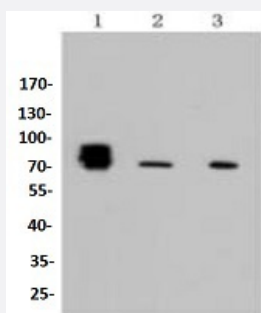


RecomAb™

ALPL recombinant monoclonal antibody

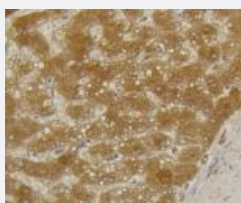
Catalog # RAB02627 Size 100 uL

Applications



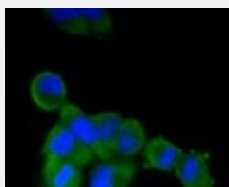
Western Blot (Cell lysate)

Western blot analysis of Lane1:HeLa whole cell lysate, Lane2:HepG2 whole cell lysate, Lane3:MG-63 whole cell lysate with ALPL recombinant monoclonal antibody (Cat # RAB02627) at 1:1000 dilution.



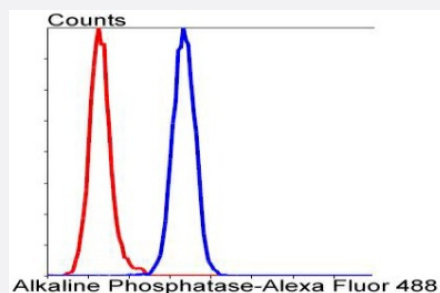
Immunohistochemistry (Formalin/PFA-fixed paraffin-embedded sections)

Immunohistochemical analysis of paraffin-embedded human liver tissue using ALPL recombinant monoclonal antibody (Cat # RAB02627). Counter stained with hematoxylin.



Immunocytochemistry

Immunocytochemical staining of human HeLa cells using ALPL recombinant monoclonal antibody (Cat # RAB02627)(green). The nuclear counter stain is DAPI (blue). Cells were fixed in paraformaldehyde, permeabilised with 0.25% Triton *100/PBS.



Flow Cytometry

Flow cytometric analysis of Hela cells with ALPL recombinant monoclonal antibody (Cat # RAB02627) at 1/50 dilution (blue) compared with an unlabelled control (cells without incubation with primary antibody; red). Alexa Fluor 488-conjugated goat anti rabbit IgG was used as the secondary antibody.

Specification

Product Description	Rabbit recombinant monoclonal antibody raised against human ALPL.
Antibody Species	Rabbit
Immunogen	Original antibody is raised against KLH conjugated synthetic peptide derived from human ALPL: 18-50.
Theoretical MW (kDa)	57
Reactivity	Human, Mouse, Rat
Specificity	This antibody detects endogenous levels of TNAP and does not cross-react with related proteins.
Form	Liquid
Purification	Protein A purification
Concentration	1 mg/ml
Isotype	IgG
Recommend Usage	Flow Cytometry (1:10-1:100) Immunocytochemistry (1:50-1:200) Immunohistochemistry (1:50-1:200) Immunoprecipitation (1:50-1:200) Western Blot (1:1000-1:5000)
Storage Buffer	In PBS, pH7.2 (0.02% sodium azide and 50% glycerol)
Storage Instruction	Store at 4°C short term. Aliquot and store at -20°C long term. Avoid freeze-thaw cycles.
Note	This product contains sodium azide: a POISONOUS AND HAZARDOUS SUBSTANCE which should be handled by trained staff only.

Applications

- Western Blot (Cell lysate)

Western blot analysis of Lane1:Hela whole cell lysate, Lane2:HepG2 whole cell lysate, Lane3:MG-63 whole cell lysate with ALPL recombinant monoclonal antibody (Cat # RAB02627) at 1:1000 dilution.

- Immunohistochemistry (Formalin/PFA-fixed paraffin-embedded sections)

Immunohistochemical analysis of paraffin-embedded human liver tissue using ALPL recombinant monoclonal antibody (Cat # RAB02627). Counter stained with hematoxylin.

- Immunohistochemistry

- Immunocytochemistry

Immunocytochemical staining of human HeLa cells using ALPL recombinant monoclonal antibody (Cat # RAB02627)(green). The nuclear counter stain is DAPI (blue). Cells were fixed in paraformaldehyde, permeabilised with 0.25% Triton *100/PBS.

- Flow Cytometry

Flow cytometric analysis of Hela cells with ALPL recombinant monoclonal antibody (Cat # RAB02627) at 1/50 dilution (blue) compared with an unlabelled control (cells without incubation with primary antibody; red). Alexa Fluor 488-conjugated goat anti rabbit IgG was used as the secondary antibody.

Gene Info — ALPL

Entrez GeneID [249](#)

Protein Accession# [P05186](#)

Gene Name ALPL

Gene Alias AP-TNAP, FLJ40094, FLJ93059, HOPS, MGC161443, MGC167935, TNAP, TNSALP

Gene Description alkaline phosphatase, liver/bone/kidney

Omim ID [146300](#) [171760](#) [241500](#) [241510](#)

Gene Ontology [Hyperlink](#)

Gene Summary

There are at least four distinct but related alkaline phosphatases: intestinal, placental, placental-like, and liver/bone/kidney (tissue non-specific). The first three are located together on chromosome 2, while the tissue non-specific form is located on chromosome 1. The product of this gene is a membrane bound glycosylated enzyme that is not expressed in any particular tissue and is, therefore, referred to as the tissue-nonspecific form of the enzyme. The exact physiological function of the alkaline phosphatases is not known. A proposed function of this form of the enzyme is matrix mineralization; however, mice that lack a functional form of this enzyme show normal skeletal development. This enzyme has been linked directly to hypophosphatasia, a disorder that is characterized by hypercalcemia and includes skeletal defects. The character of this disorder can vary, however, depending on the specific mutation since this determines age of onset and severity of symptoms. Alternatively spliced transcript variants, which encode the same protein, have been identified for this gene. [provided by RefSeq]

Other Designations

OTTHUMP00000002971|OTTHUMP00000002972|alkaline phosphatase, tissue-nonspecific isozyme|alkaline phosphomonoesterase|glycerophosphatase|liver/bone/kidney-type alkaline phosphatase|tissue non-specific alkaline phosphatase|tissue-nonspecific ALP

Pathway

- [Folate biosynthesis](#)
- [gamma-Hexachlorocyclohexane degradation](#)
- [Metabolic pathways](#)

Disease

- [Alzheimer disease](#)
- [Cardiovascular Diseases](#)
- [Chondrocalcinosis](#)
- [Diabetes Complications](#)
- [Fractures](#)
- [Genetic Predisposition to Disease](#)
- [Hypertension](#)
- [Hypophosphatasia](#)
- [Kidney Failure](#)
- [Metabolic Syndrome X](#)

- [Neoplasms](#)
- [Osteoporosis](#)
- [Spondylitis](#)
- [Tobacco Use Disorder](#)