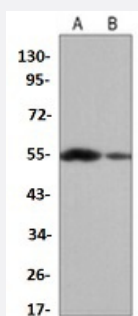


RecomAb™

# ALDH1A1 recombinant monoclonal antibody

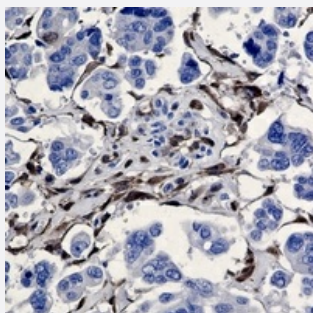
Catalog # RAB02624      Size 100 uL

## Applications



### Western Blot (Cell lysate)

Western blot analysis of K562 (A), NIH3T3 (B) whole cell lysates with ALDH1A1 recombinant monoclonal antibody (Cat # RAB02624).



### Immunohistochemistry (Formalin/PFA-fixed paraffin-embedded sections)

Immunohistochemical analysis of human cholangiocarcinoma formalin fixed paraffin embedded tissue section using ALDH1A1 recombinant monoclonal antibody (Cat # RAB02624). The section was pre-treated using heat mediated antigen retrieval with sodium citrate buffer (pH 6.38). The section was then incubated with the antibody at room temperature and detected using an HRP conjugated compact polymer system. DAB was used as the chromogen. The section was then counterstained with haematoxylin and mounted with DPX.

## Specification

<b>Product Description</b>	Rabbit recombinant monoclonal antibody raised against human ALDH1A1.
<b>Antibody Species</b>	Rabbit
<b>Immunogen</b>	Original antibody is raised against a synthetic peptide of human ALDH1A1.
<b>Theoretical MW (kDa)</b>	55
<b>Reactivity</b>	Human, Mouse

Specificity	Recognizes endogenous levels of ALDH1A1 protein.
Form	Liquid
Purification	Immunogen affinity chromatography
Isotype	IgG
Recommend Usage	Immunohistochemistry (1:50-1:100) Immunoprecipitation (1:10-1:50) Western Blot (1:500-1:1000)
Storage Buffer	In 50mM Tris-Glycine, pH 7.4 (0.15M NaCl, 50% Glycerol, 0.01% Sodium azide and 0.05% BSA)
Storage Instruction	Store at 4°C short term. Aliquot and store at -20°C long term. Avoid freeze-thaw cycles.
Note	This product contains sodium azide: a POISONOUS AND HAZARDOUS SUBSTANCE which should be handled by trained staff only.

## Applications

- Western Blot (Cell lysate)

Western blot analysis of K562 (A), NIH3T3 (B) whole cell lysates with ALDH1A1 recombinant monoclonal antibody (Cat # RAB02624).

- Immunohistochemistry (Formalin/PFA-fixed paraffin-embedded sections)

Immunohistochemical analysis of human cholangiocarcinoma formalin fixed paraffin embedded tissue section using ALDH1A1 recombinant monoclonal antibody (Cat # RAB02624). The section was pre-treated using heat mediated antigen retrieval with sodium citrate buffer (pH 6.38). The section was then incubated with the antibody at room temperature and detected using an HRP conjugated compact polymer system. DAB was used as the chromogen. The section was then counterstained with haematoxylin and mounted with DPX.

- Immunoprecipitation

## Gene Info — ALDH1A1

Entrez GeneID	<a href="#">216</a>
Protein Accession#	<a href="#">P00352</a>
Gene Name	ALDH1A1
Gene Alias	ALDC, ALDH-E1, ALDH1, ALDH11, MGC2318, PUMB1, RALDH1

Gene Description	aldehyde dehydrogenase 1 family, member A1
Gene Ontology	<a href="#">Hyperlink</a>
Gene Summary	<p>This protein belongs to the aldehyde dehydrogenases family of proteins. Aldehyde dehydrogenase is the second enzyme of the major oxidative pathway of alcohol metabolism. Two major liver isoforms of this enzyme, cytosolic and mitochondrial, can be distinguished by their electrophoretic mobilities, kinetic properties, and subcellular localizations. Most Caucasians have two major isozymes, while approximately 50% of Orientals have only the cytosolic isozyme, missing the mitochondrial isozyme. A remarkably higher frequency of acute alcohol intoxication among Orientals than among Caucasians could be related to the absence of the mitochondrial isozyme. This gene encodes a cytosolic isoform, which has a high affinity for aldehydes. [provided by RefSeq]</p>
Other Designations	ALDH class 1 acetaldehyde dehydrogenase 1 aldehyde dehydrogenase 1, soluble aldehyde dehydrogenase 1A1 aldehyde dehydrogenase, liver cytosolic retinal dehydrogenase 1 retinaldehyde dehydrogenase 1

## Pathway

- [Metabolic pathways](#)
- [Retinol metabolism](#)

## Disease

- [Alcoholism](#)
- [Breast cancer](#)
- [Breast Neoplasms](#)
- [Carcinoma](#)
- [Chromosome Deletion](#)
- [Cleft Lip](#)
- [Cleft Palate](#)
- [Disease Models](#)
- [Drug Toxicity](#)
- [Genetic Predisposition to Disease](#)
- [Kidney Failure](#)

- [Lymphoma](#)
- [Neoplasms](#)
- [Ovarian cancer](#)
- [Ovarian Neoplasms](#)
- [Schizophrenia](#)
- [Tobacco Use Disorder](#)