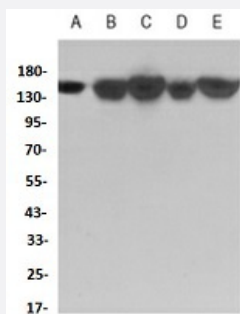


RecomAb™

# KDM4A recombinant monoclonal antibody

Catalog # RAB02623      Size 100 uL

## Applications



### Western Blot (Cell lysate)

Western blot analysis of HeLa (A), A549 (B), HL60 (C), U2OS (D), U87MG (E) whole cell lysates with KDM4A recombinant monoclonal antibody (Cat # RAB02623).

## Specification

Product Description	Rabbit recombinant monoclonal antibody raised against human KDM4A.
Antibody Species	Rabbit
Immunogen	Original antibody is raised against a synthesized peptide derived from human KDM4A.
Theoretical MW (kDa)	150
Reactivity	Human
Specificity	Recognizes endogenous levels of KDM4A protein.
Form	Liquid
Purification	Immunogen affinity chromatography
Isotype	IgG
Recommend Usage	Immunoprecipitation (1:10-1:50) Western Blot (1:500-1:1000)
Storage Buffer	In 50mM Tris-Glycine, pH 7.4 (0.15M NaCl, 50% Glycerol, 0.01% Sodium azide and 0.05% BSA)

**Storage Instruction**

Store at 4°C short term.  
Aliquot and store at -20°C long term.  
Avoid freeze-thaw cycles.

**Note**

This product contains sodium azide: a POISONOUS AND HAZARDOUS SUBSTANCE which should be handled by trained staff only.

## Applications

- Western Blot (Cell lysate)

Western blot analysis of HeLa (A), A549 (B), HL60 (C), U2OS (D), U87MG (E) whole cell lysates with KDM4A recombinant monoclonal antibody (Cat # RAB02623).

- Immunoprecipitation

## Gene Info — JMJD2A

**Entrez GeneID**[9682](#)**Protein Accession#**[O75164](#)**Gene Name**

JMJD2A

**Gene Alias**

JHDM3A, JMJD2, KDM4A, KIAA0677

**Gene Description**

jumonji domain containing 2A

**Omim ID**[609764](#)**Gene Ontology**[Hyperlink](#)**Gene Summary**

This gene is a member of the Jumonji domain 2 (JMJD2) family and encodes a protein containing a JmjN domain, a JmjC domain, a JD2H domain, two TUDOR domains, and two PHD-type zinc fingers. This nuclear protein functions as a trimethylation-specific demethylase, converting specific trimethylated histone residues to the dimethylated form, and as a transcriptional repressor. [provided by RefSeq]

**Other Designations**

OTTHUMP00000008810|jumonji C domain-containing histone demethylase 3A