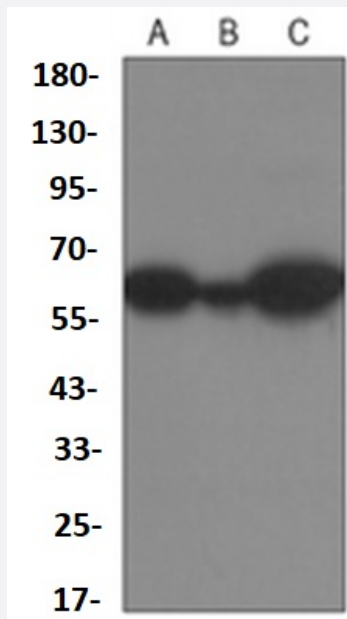


RecomAb™

YTHDF1 recombinant monoclonal antibody

Catalog # RAB02621 Size 100 uL

Applications



Western Blot (Cell lysate)

Western blot analysis of Hela (A), CHOK1 (B), Ramos (C) whole cell lysates with YTHDF1 recombinant monoclonal antibody (Cat # RAB02621).

Specification

Product Description	Rabbit recombinant monoclonal antibody raised against human YTHDF1.
Antibody Species	Rabbit
Immunogen	Original antibody is raised against recombinant protein of human YTHDF1.
Theoretical MW (kDa)	60
Reactivity	Hamster, Human
Specificity	Recognizes endogenous levels of YTHDF1 protein.
Form	Liquid

Purification	Immunogen affinity chromatography
Isotype	IgG
Recommend Usage	Immunoprecipitation (1:10-1:50) Western Blot (1:500-1:1000)
Storage Buffer	In 50mM Tris-Glycine, pH 7.4 (0.15M NaCl, 50% Glycerol, 0.01% Sodium azide and 0.05% BSA)
Storage Instruction	Store at 4°C short term. Aliquot and store at -20°C long term. Avoid freeze-thaw cycles.
Note	This product contains sodium azide: a POISONOUS AND HAZARDOUS SUBSTANCE which should be handled by trained staff only.

Applications

- Western Blot (Cell lysate)

Western blot analysis of Hela (A), CHOK1 (B), Ramos (C) whole cell lysates with YTHDF1 recombinant monoclonal antibody (Cat # RAB02621).

- Immunoprecipitation

Gene Info — YTHDF1

Entrez GeneID	54915
Protein Accession#	Q9BYJ9
Gene Name	YTHDF1
Gene Alias	C20orf21, FLJ20391
Gene Description	YTH domain family, member 1
Gene Ontology	Hyperlink
Gene Summary	O
Other Designations	OTTHUMP00000031533 YTH domain family 1