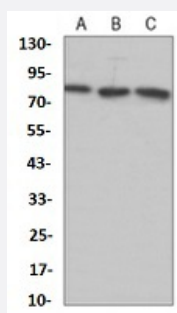


RecomAb™

CRTC2 recombinant monoclonal antibody

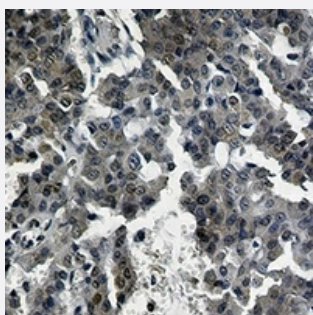
Catalog # RAB02615 Size 100 uL

Applications



Western Blot (Cell lysate)

Western blot analysis of A549 (A), HL60 (B), U251 (C) whole cell lysates with CRTC2 recombinant monoclonal antibody (Cat # RAB02615).



Immunohistochemistry (Formalin/PFA-fixed paraffin-embedded sections)

Immunohistochemical analysis of human breast carcinoma formalin fixed paraffin embedded tissue section using CRTC2 recombinant monoclonal antibody (Cat # RAB02615). The section was pre-treated using heat mediated antigen retrieval with sodium citrate buffer (pH 6.27). The section was then incubated with the antibody at room temperature and detected using an HRP conjugated compact polymer system. DAB was used as the chromogen. The section was then counterstained with haematoxylin and mounted with DPX.

Specification

Product Description	Rabbit recombinant monoclonal antibody raised against human CRTC2.
Antibody Species	Rabbit
Immunogen	Original antibody is raised against a synthetic peptide of human CRTC2.
Theoretical MW (kDa)	80
Reactivity	Human

Specificity	Recognizes endogenous levels of TORC2 protein.
Form	Liquid
Purification	Immunogen affinity chromatography
Isotype	IgG
Recommend Usage	Immunohistochemistry (1:50-1:100) Immunoprecipitation (1:10-1:50) Western Blot (1:500-1:1000)
Storage Buffer	In 50mM Tris-Glycine, pH 7.4 (0.15M NaCl, 50% Glycerol, 0.01% Sodium azide and 0.05% BSA)
Storage Instruction	Store at 4°C short term. Aliquot and store at -20°C long term. Avoid freeze-thaw cycles.
Note	This product contains sodium azide: a POISONOUS AND HAZARDOUS SUBSTANCE which should be handled by trained staff only.

Applications

- Western Blot (Cell lysate)

Western blot analysis of A549 (A), HL60 (B), U251 (C) whole cell lysates with CRTC2 recombinant monoclonal antibody (Cat # RAB02615).

- Immunohistochemistry (Formalin/PFA-fixed paraffin-embedded sections)

Immunohistochemical analysis of human breast carcinoma formalin fixed paraffin embedded tissue section using CRTC2 recombinant monoclonal antibody (Cat # RAB02615). The section was pre-treated using heat mediated antigen retrieval with sodium citrate buffer (pH 6.27). The section was then incubated with the antibody at room temperature and detected using an HRP conjugated compact polymer system. DAB was used as the chromogen. The section was then counterstained with haematoxylin and mounted with DPX.

- Immunoprecipitation

Gene Info — CRTC2

Entrez GeneID	200186
Protein Accession#	Q53ET0
Gene Name	CRTC2
Gene Alias	RP11-422P24.6, TORC2

Gene Description	CREB regulated transcription coactivator 2
Omim ID	608972
Gene Ontology	Hyperlink
Other Designations	transducer of regulated cAMP response element-binding protein (CREB) 2

Disease

- [Diabetes Mellitus](#)
- [Disease Progression](#)
- [Disease Susceptibility](#)
- [Genetic Predisposition to Disease](#)
- [HIV Infections](#)