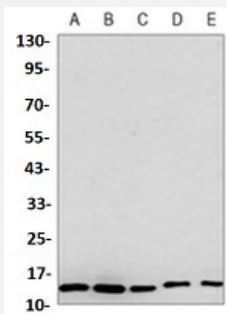


RecomAb™

RPS20 recombinant monoclonal antibody

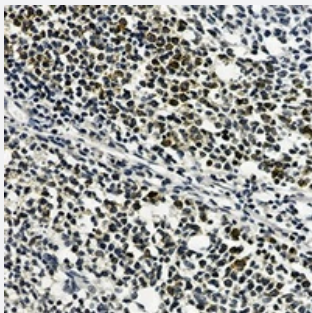
Catalog # RAB02607 Size 100 uL

Applications



Western Blot (Cell lysate)

Western blot analysis of NIH3T3 (A), Raw264.7 (B), PC12 (C), C6 (D), HeLa (E) whole cell lysates with RPS20 recombinant monoclonal antibody (Cat # RAB02607).



Immunohistochemistry (Formalin/PFA-fixed paraffin-embedded sections)

Immunohistochemical analysis of human tonsil formalin fixed paraffin embedded tissue section using RPS20 recombinant monoclonal antibody (Cat # RAB02607). The section was pre-treated using heat mediated antigen retrieval with sodium citrate buffer (pH 6.131). The section was then incubated with the antibody at room temperature and detected using an HRP conjugated compact polymer system. DAB was used as the chromogen. The section was then counterstained with haematoxylin and mounted with DPX.

Specification

| | |
|-----------------------------|---|
| Product Description | Rabbit recombinant monoclonal antibody raised against human RPS20. |
| Antibody Species | Rabbit |
| Immunogen | Original antibody is raised against a synthetic peptide of human RPS20. |
| Theoretical MW (kDa) | 15 |
| Reactivity | Hamster, Human, Mouse, Rat |

| | |
|---------------------|--|
| Specificity | Recognizes endogenous levels of RPS20 protein. |
| Form | Liquid |
| Purification | Immunogen affinity chromatography |
| Isotype | IgG |
| Recommend Usage | Immunohistochemistry (1:50-1:100) Western Blot (1:500-1:1000) |
| Storage Buffer | In 50mM Tris-Glycine, pH 7.4 (0.15M NaCl, 50% Glycerol, 0.01% Sodium azide and 0.05% BSA) |
| Storage Instruction | Store at 4°C short term. Aliquot and store at -20°C long term. Avoid freeze-thaw cycles. |
| Note | This product contains sodium azide: a POISONOUS AND HAZARDOUS SUBSTANCE which should be handled by trained staff only. |

Applications

- Western Blot (Cell lysate)

Western blot analysis of NIH3T3 (A), Raw264.7 (B), PC12 (C), C6 (D), Hela (E) whole cell lysates with RPS20 recombinant monoclonal antibody (Cat # RAB02607).

- Immunohistochemistry (Formalin/PFA-fixed paraffin-embedded sections)

Immunohistochemical analysis of human tonsil formalin fixed paraffin embedded tissue section using RPS20 recombinant monoclonal antibody (Cat # RAB02607). The section was pre-treated using heat mediated antigen retrieval with sodium citrate buffer (pH 6.131). The section was then incubated with the antibody at room temperature and detected using an HRP conjugated compact polymer system. DAB was used as the chromogen. The section was then counterstained with haematoxylin and mounted with DPX.

Gene Info — RPS20

| | |
|--------------------|------------------------|
| Entrez GeneID | 6224 |
| Protein Accession# | P60866 |
| Gene Name | RPS20 |
| Gene Alias | FLJ27451, MGC102930 |
| Gene Description | ribosomal protein S20 |
| Omim ID | 603682 |

Gene Ontology

[Hyperlink](#)

Gene Summary

Ribosomes, the organelles that catalyze protein synthesis, consist of a small 40S subunit and a large 60S subunit. Together these subunits are composed of 4 RNA species and approximately 80 structurally distinct proteins. This gene encodes a ribosomal protein that is a component of the 40S subunit. The protein belongs to the S10P family of ribosomal proteins. It is located in the cytoplasm. This gene is co-transcribed with the small nucleolar RNA gene U54, which is located in its second intron. As is typical for genes encoding ribosomal proteins, there are multiple processed pseudogenes of this gene dispersed through the genome. Two transcript variants encoding different isoforms have been identified for this gene. [provided by RefSeq]

Other Designations

40S ribosomal protein S20

Pathway

- [Ribosome](#)

Disease

- [Diabetes Mellitus](#)