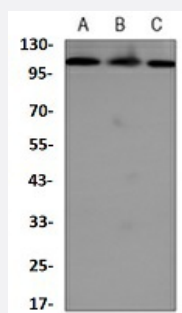


RecomAb™

# RAD21 recombinant monoclonal antibody

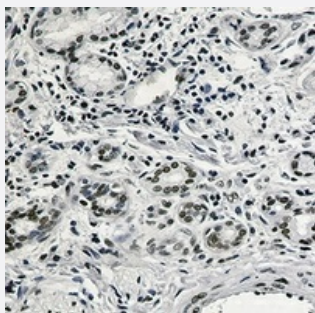
Catalog # RAB02605      Size 100 uL

## Applications



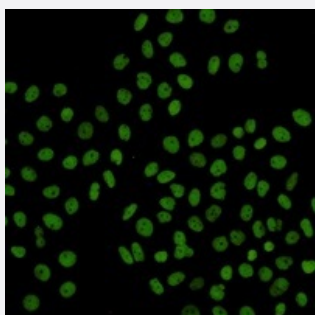
### Western Blot (Cell lysate)

Western blot analysis of HeLa (A), CHOK1 (B), Ramos (C) whole cell lysates with RAD21 recombinant monoclonal antibody (Cat # RAB02605).



### Immunohistochemistry (Formalin/PFA-fixed paraffin-embedded sections)

Immunohistochemical analysis of human lung cancer formalin fixed paraffin embedded tissue section using RAD21 recombinant monoclonal antibody (Cat # RAB02605). The section was pre-treated using heat mediated antigen retrieval with sodium citrate buffer (pH 6.97). The section was then incubated with the antibody at room temperature and detected using an HRP conjugated compact polymer system. DAB was used as the chromogen. The section was then counterstained with haematoxylin and mounted with DPX.



### Immunofluorescence

Immunofluorescent analysis of HeLa cells with RAD21 recombinant monoclonal antibody (Cat # RAB02605). Formalin-fixed cells were permeabilized with 0.1% Triton X-100 in TBS for 5-10 minutes and blocked with 3% BSA-PBS for 30 minutes at room temperature. Cells were probed with the primary antibody in 3% BSA-PBS and incubated overnight at 4 °C in a humidified chamber. Cells were washed with PBST and incubated with a AF488-conjugated secondary antibody (green) in PBS at room temperature in the dark.

## Specification

<b>Product Description</b>	Rabbit recombinant monoclonal antibody raised against human RAD21.
<b>Antibody Species</b>	Rabbit
<b>Immunogen</b>	Original antibody is raised against a synthetic peptide of human RAD21.
<b>Theoretical MW (kDa)</b>	110
<b>Reactivity</b>	Hamster, Human
<b>Specificity</b>	Recognizes endogenous levels of RAD21 protein.
<b>Form</b>	Liquid
<b>Purification</b>	Immunogen affinity chromatography
<b>Isotype</b>	IgG
<b>Recommend Usage</b>	Immunocytochemistry (1:50-1:100) Immunofluorescence (1:50-1:100) Immunohistochemistry (1:50-1:100) Western Blot (1:500-1:1000)
<b>Storage Buffer</b>	In 50mM Tris-Glycine, pH 7.4 (0.15M NaCl, 50% Glycerol, 0.01% Sodium azide and 0.05% BSA)
<b>Storage Instruction</b>	Store at 4°C short term. Aliquot and store at -20°C long term. Avoid freeze-thaw cycles.
<b>Note</b>	This product contains sodium azide: a POISONOUS AND HAZARDOUS SUBSTANCE which should be handled by trained staff only.

## Applications

- Western Blot (Cell lysate)

Western blot analysis of Hela (A), CHOK1 (B), Ramos (C) whole cell lysates with RAD21 recombinant monoclonal antibody (Cat # RAB02605).

- Immunohistochemistry (Formalin/PFA-fixed paraffin-embedded sections)

Immunohistochemical analysis of human lung cancer formalin fixed paraffin embedded tissue section using RAD21 recombinant monoclonal antibody (Cat # RAB02605). The section was pre-treated using heat mediated antigen retrieval with sodium citrate buffer (pH 6.97). The section was then incubated with the antibody at room temperature and detected using an HRP conjugated compact polymer system. DAB was used as the chromogen. The section was then counterstained with haematoxylin and mounted with DPX.

- Immunocytochemistry

- Immunofluorescence

Immunofluorescent analysis of HeLa cells with RAD21 recombinant monoclonal antibody (Cat # RAB02605). Formalin-fixed cells were permeabilized with 0.1% Triton X-100 in TBS for 5-10 minutes and blocked with 3% BSA-PBS for 30 minutes at room temperature. Cells were probed with the primary antibody in 3% BSA-PBS and incubated overnight at 4 °C in a humidified chamber. Cells were washed with PBST and incubated with a AF488-conjugated secondary antibody (green) in PBS at room temperature in the dark.

## Gene Info — RAD21

Entrez GeneID	<a href="#">5885</a>
Protein Accession#	<a href="#">O60216</a>
Gene Name	RAD21
Gene Alias	FLJ25655, FLJ40596, HR21, HRAD21, KIAA0078, MCD1, NXP1, SCC1, hHR21
Gene Description	RAD21 homolog (S. pombe)
Omim ID	<a href="#">606462</a>
Gene Ontology	<a href="#">Hyperlink</a>
Gene Summary	The protein encoded by this gene is highly similar to the gene product of Schizosaccharomyces pombe rad21, a gene involved in the repair of DNA double-strand breaks, as well as in chromatid cohesion during mitosis. This protein is a nuclear phospho-protein, which becomes hyperphosphorylated in cell cycle M phase. The highly regulated association of this protein with mitotic chromatin specifically at the centromere region suggests its role in sister chromatid cohesion in mitotic cells. [provided by RefSeq]
Other Designations	RAD21 homolog nuclear matrix protein 1 protein involved in DNA double-strand break repair

## Pathway

- [Cell cycle](#)

## Disease

- [Adenocarcinoma](#)
- [Fibrosis](#)
- [Genetic Predisposition to Disease](#)
- [Neoplasms](#)
- [Pancreatic Neoplasms](#)
- [Radiation Injuries](#)