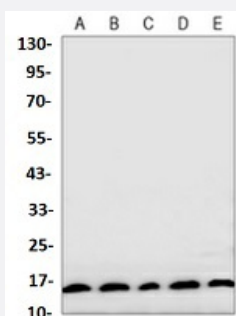


RecomAb™

MAP1LC3A recombinant monoclonal antibody

Catalog # RAB02598 Size 100 uL

Applications



Western Blot

Western blot analysis of A549 (A), MCF7 (B), 293T (C), C2C12 (D), rat brain (E) whole cell lysates with MAP1LC3A recombinant monoclonal antibody (Cat # RAB02598).

Specification

Product Description	Rabbit recombinant monoclonal antibody raised against human MAP1LC3A.
Antibody Species	Rabbit
Immunogen	Original antibody is raised against a synthetic peptide of human MAP1LC3A.
Theoretical MW (kDa)	14
Reactivity	Human, Mouse, Rat
Specificity	Recognizes endogenous levels of LC3-I/II protein.
Form	Liquid
Purification	Immunogen affinity chromatography
Isotype	IgG
Recommend Usage	Immunoprecipitation (1:10-1:50) Western Blot (1:500-1:1000)
Storage Buffer	In 50mM Tris-Glycine, pH 7.4 (0.15M NaCl, 50% Glycerol, 0.01% Sodium azide and 0.05% BSA)

Storage Instruction

Store at 4°C short term.
Aliquot and store at -20°C long term.
Avoid freeze-thaw cycles.

Note

This product contains sodium azide: a POISONOUS AND HAZARDOUS SUBSTANCE which should be handled by trained staff only.

Applications

- Western Blot

Western blot analysis of A549 (A), MCF7 (B), 293T (C), C2C12 (D), rat brain (E) whole cell lysates with MAP1LC3A recombinant monoclonal antibody (Cat # RAB02598).

- Immunoprecipitation

Gene Info — MAP1LC3A

Entrez GeneID[84557](#)**Protein Accession#**[Q9H492](#)**Gene Name**

MAP1LC3A

Gene Alias

LC3, LC3A, MAP1ALC3, MAP1BLC3

Gene Description

microtubule-associated protein 1 light chain 3 alpha

Omim ID[601242](#)**Gene Ontology**[Hyperlink](#)**Gene Summary**

MAP1A and MAP1B are microtubule-associated proteins which mediate the physical interactions between microtubules and components of the cytoskeleton. MAP1A and MAP1B each consist of a heavy chain subunit and multiple light chain subunits. The protein encoded by this gene is one of the light chain subunits and can associate with either MAP1A or MAP1B. Two transcript variants encoding different isoforms have been found for this gene. [provided by RefSeq]

Other Designations

MAP1 light chain 3-like protein 1|MAP1A/1B light chain 3 A|MAP1A/MAP1B LC3 A|OTTHUMP0000030696|OTTHUMP00000030697|OTTHUMP00000030698|microtubule-associated proteins 1A/1B light chain 3