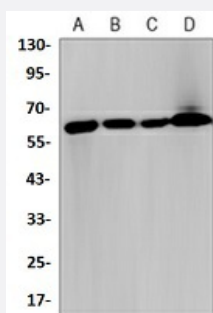


RecomAb™

# KEAP1 recombinant monoclonal antibody

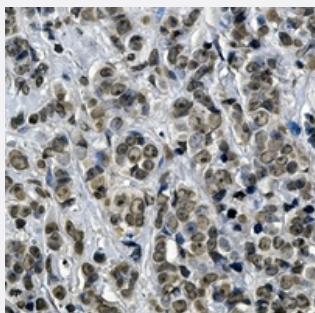
Catalog # RAB02595      Size 100 uL

## Applications



### Western Blot (Cell lysate)

Western blot analysis of Raw264.7 (A), HeLa (B), A549 (C), C2C12 (D) whole cell lysates with KEAP1 recombinant monoclonal antibody (Cat # RAB02595).



### Immunohistochemistry (Formalin/PFA-fixed paraffin-embedded sections)

Immunohistochemical analysis of human breast carcinoma formalin fixed paraffin embedded tissue section using KEAP1 recombinant monoclonal antibody (Cat # RAB02595). The section was pre-treated using heat mediated antigen retrieval with sodium citrate buffer (pH 6.22). The section was then incubated with the antibody at room temperature and detected using an HRP conjugated compact polymer system. DAB was used as the chromogen. The section was then counterstained with haematoxylin and mounted with DPX.

## Specification

Product Description	Rabbit recombinant monoclonal antibody raised against human KEAP1.
Antibody Species	Rabbit
Immunogen	Original antibody is raised against recombinant protein of human KEAP1.
Theoretical MW (kDa)	60
Reactivity	Human, Mouse

Specificity	Recognizes endogenous levels of KEAP1 protein.
Form	Liquid
Purification	Immunogen affinity chromatography
Isotype	IgG
Recommend Usage	Immunohistochemistry (1:50-1:100) Western Blot (1:500-1:1000)
Storage Buffer	In 50mM Tris-Glycine, pH 7.4 (0.15M NaCl, 50% Glycerol, 0.01% Sodium azide and 0.05% BSA)
Storage Instruction	Store at 4°C short term. Aliquot and store at -20°C long term. Avoid freeze-thaw cycles.
Note	This product contains sodium azide: a POISONOUS AND HAZARDOUS SUBSTANCE which should be handled by trained staff only.

## Applications

- Western Blot (Cell lysate)

Western blot analysis of Raw264.7 (A), Hela (B), A549 (C), C2C12 (D) whole cell lysates with KEAP1 recombinant monoclonal antibody (Cat # RAB02595).

- Immunohistochemistry (Formalin/PFA-fixed paraffin-embedded sections)

Immunohistochemical analysis of human breast carcinoma formalin fixed paraffin embedded tissue section using KEAP1 recombinant monoclonal antibody (Cat # RAB02595). The section was pre-treated using heat mediated antigen retrieval with sodium citrate buffer (pH 6.22). The section was then incubated with the antibody at room temperature and detected using an HRP conjugated compact polymer system. DAB was used as the chromogen. The section was then counterstained with haematoxylin and mounted with DPX.

## Gene Info — KEAP1

Entrez GeneID	<a href="#">9817</a>
Protein Accession#	<a href="#">Q14145</a>
Gene Name	KEAP1
Gene Alias	INrf2, KIAA0132, KLHL19, MGC10630, MGC1114, MGC20887, MGC4407, MGC9454
Gene Description	kelch-like ECH-associated protein 1
Omim ID	<a href="#">606016</a>

## Gene Ontology

[Hyperlink](#)

## Gene Summary

This gene encodes a protein containing KELCH-1 like domains, as well as a BTB/POZ domain. Kelch-like ECH-associated protein 1 interacts with NF-E2-related factor 2 in a redox-sensitive manner and the dissociation of the proteins in the cytoplasm is followed by transportation of NF-E2-related factor 2 to the nucleus. This interaction results in the expression of the catalytic subunit of gamma-glutamylcysteine synthetase. Two alternatively spliced transcript variants encoding the same isoform have been found for this gene. [provided by RefSeq]

## Other Designations

cytosolic inhibitor of Nrf2

## Pathway

- [Ubiquitin mediated proteolysis](#)

## Disease

- [Alzheimer Disease](#)
- [Carcinoma](#)
- [Cataract](#)
- [Disease Progression](#)
- [Esophageal Neoplasms](#)
- [Genetic Predisposition to Disease](#)
- [Lung Neoplasms](#)
- [Parkinson Disease](#)
- [Pulmonary Disease](#)
- [Skin Neoplasms](#)