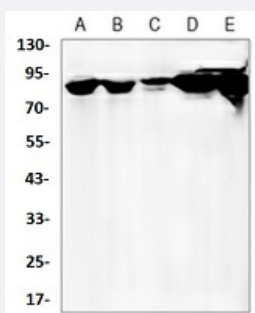


RecomAb™

# HSP90AB1 recombinant monoclonal antibody

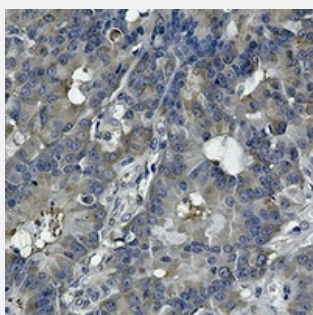
Catalog # RAB02592      Size 100 uL

## Applications



### Western Blot (Cell lysate)

Western blot analysis of PC12 (A), Raw264.7 (B), Hela (C), A549 (D), HL60 (E) whole cell lysates with HSP90AB1 recombinant monoclonal antibody (Cat # RAB02592).



### Immunohistochemistry (Formalin/PFA-fixed paraffin-embedded sections)

Immunohistochemical analysis of human breast carcinoma formalin fixed paraffin embedded tissue section using HSP90AB1 recombinant monoclonal antibody (Cat # RAB02592). The section was pre-treated using heat mediated antigen retrieval with sodium citrate buffer (pH 6.20). The section was then incubated with the antibody at room temperature and detected using an HRP conjugated compact polymer system. DAB was used as the chromogen. The section was then counterstained with haematoxylin and mounted with DPX.

## Specification

<b>Product Description</b>	Rabbit recombinant monoclonal antibody raised against human HSP90AB1.
<b>Antibody Species</b>	Rabbit
<b>Immunogen</b>	Original antibody is raised against a synthetic peptide of human HSP90AB1.
<b>Theoretical MW (kDa)</b>	90
<b>Reactivity</b>	Human, Mouse, Rat

Specificity	Recognizes endogenous levels of HSP90 beta protein.
Form	Liquid
Purification	Immunogen affinity chromatography
Isotype	IgG
Recommend Usage	Immunohistochemistry (1:50-1:100) Western Blot (1:500-1:1000)
Storage Buffer	In 50mM Tris-Glycine, pH 7.4 (0.15M NaCl, 50% Glycerol, 0.01% Sodium azide and 0.05% BSA)
Storage Instruction	Store at 4°C short term. Aliquot and store at -20°C long term. Avoid freeze-thaw cycles.
Note	This product contains sodium azide: a POISONOUS AND HAZARDOUS SUBSTANCE which should be handled by trained staff only.

## Applications

- Western Blot (Cell lysate)

Western blot analysis of PC12 (A), Raw264.7 (B), Hela (C), A549 (D), HL60 (E) whole cell lysates with HSP90AB1 recombinant monoclonal antibody (Cat # RAB02592).

- Immunohistochemistry (Formalin/PFA-fixed paraffin-embedded sections)

Immunohistochemical analysis of human breast carcinoma formalin fixed paraffin embedded tissue section using HSP90AB1 recombinant monoclonal antibody (Cat # RAB02592). The section was pre-treated using heat mediated antigen retrieval with sodium citrate buffer (pH 6.20). The section was then incubated with the antibody at room temperature and detected using an HRP conjugated compact polymer system. DAB was used as the chromogen. The section was then counterstained with haematoxylin and mounted with DPX.

## Gene Info — HSP90AB1

Entrez GeneID	<a href="#">3326</a>
Protein Accession#	<a href="#">P08238</a>
Gene Name	HSP90AB1
Gene Alias	D6S182, FLJ26984, HSP90-BETA, HSP90B, HSPC2, HSPCB
Gene Description	heat shock protein 90kDa alpha (cytosolic), class B member 1
Omim ID	<a href="#">140572</a>

## Gene Ontology

[Hyperlink](#)

## Gene Summary

HSP90 proteins are highly conserved molecular chaperones that have key roles in signal transduction, protein folding, protein degradation, and morphologic evolution. HSP90 proteins normally associate with other cochaperones and play important roles in folding newly synthesized proteins or stabilizing and refolding denatured proteins after stress. There are 2 major cytosolic HSP90 proteins, HSP90AA1 (MIM 140571), an inducible form, and HSP90AB1, a constitutive form. Other HSP90 proteins are found in endoplasmic reticulum (HSP90B1; MIM 191175) and mitochondria (TRAP1; MIM 606219) (Chen et al., 2005 [PubMed 16269234]).[supplied by OMIM]

## Other Designations

OTTHUMP00000016517|OTTHUMP00000016518|OTTHUMP00000016519|OTTHUMP00000039869|heat shock 90kD protein 1, beta|heat shock 90kDa protein 1, beta|heat shock protein beta

## Pathway

- [Antigen processing and presentation](#)
- [Pathways in cancer](#)
- [Prostate cancer](#)

## Disease

- [Asthma](#)
- [Cardiovascular Diseases](#)
- [Diabetes Mellitus](#)
- [Edema](#)
- [Genetic Predisposition to Disease](#)
- [Hematologic Diseases](#)
- [Kidney Failure](#)
- [Occupational Diseases](#)