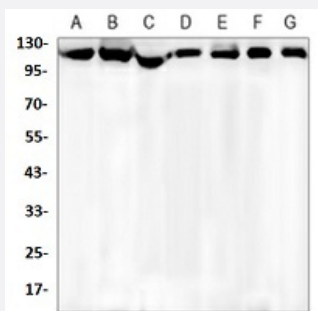


RecomAb™

# KIF11 recombinant monoclonal antibody

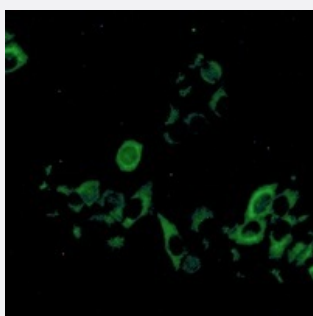
Catalog # RAB02589      Size 100 uL

## Applications



### Western Blot (Cell lysate)

Western blot analysis of NIH3T3 (A), MEF (B), HeLa (C), A549 (D), HL60 (E), U2OS (F), C6 (G) whole cell lysates with KIF11 recombinant monoclonal antibody (Cat # RAB02589).



### Immunofluorescence

Immunofluorescent analysis of HeLa cells with KIF11 recombinant monoclonal antibody (Cat # RAB02589). Formalin-fixed cells were permeabilized with 0.1% Triton X-100 in TBS for 5-10 minutes and blocked with 3% BSA-PBS for 30 minutes at room temperature. Cells were probed with the primary antibody in 3% BSA-PBS and incubated overnight at 4 °C in a humidified chamber. Cells were washed with PBST and incubated with a AF488-conjugated secondary antibody (green) in PBS at room temperature in the dark.

## Specification

Product Description	Rabbit recombinant monoclonal antibody raised against human KIF11.
Antibody Species	Rabbit
Immunogen	Original antibody is raised against recombinant protein of human KIF11.
Theoretical MW (kDa)	120
Reactivity	Human, Mouse, Rat
Specificity	Recognizes endogenous levels of EG5 protein.

Form	Liquid
Purification	Immunogen affinity chromatography
Isotype	IgG
Recommend Usage	Immunocytochemistry (1:50-1:100) Immunofluorescence (1:50-1:100) Western Blot (1:500-1:1000)
Storage Buffer	In 50mM Tris-Glycine, pH 7.4 (0.15M NaCl, 50% Glycerol, 0.01% Sodium azide and 0.05% BSA)
Storage Instruction	Store at 4°C short term. Aliquot and store at -20°C long term. Avoid freeze-thaw cycles.
Note	This product contains sodium azide: a POISONOUS AND HAZARDOUS SUBSTANCE which should be handled by trained staff only.

## Applications

- Western Blot (Cell lysate)

Western blot analysis of NIH3T3 (A), MEF (B), HeLa (C), A549 (D), HL60 (E), U2OS (F), C6 (G) whole cell lysates with KIF11 recombinant monoclonal antibody (Cat # RAB02589).

- Immunocytochemistry

- Immunofluorescence

Immunofluorescent analysis of HeLa cells with KIF11 recombinant monoclonal antibody (Cat # RAB02589). Formalin-fixed cells were permeabilized with 0.1% Triton X-100 in TBS for 5-10 minutes and blocked with 3% BSA-PBS for 30 minutes at room temperature. Cells were probed with the primary antibody in 3% BSA-PBS and incubated overnight at 4 °C in a humidified chamber. Cells were washed with PBST and incubated with a AF488-conjugated secondary antibody (green) in PBS at room temperature in the dark.

## Gene Info — KIF11

Entrez GeneID	<a href="#">3832</a>
Protein Accession#	<a href="#">P52732</a>
Gene Name	KIF11
Gene Alias	EG5, HKSP, KNSL1, TRIP5

Gene Description	kinesin family member 11
Omim ID	<a href="#">148760</a>
Gene Ontology	<a href="#">Hyperlink</a>
Gene Summary	This gene encodes a motor protein that belongs to the kinesin-like protein family. Members of this protein family are known to be involved in various kinds of spindle dynamics. The function of this gene product includes chromosome positioning, centrosome separation and establishing a bipolar spindle during cell mitosis. [provided by RefSeq]
Other Designations	OTTHUMP00000020099 kinesin-like 1 kinesin-like spindle protein kinesin-related motor protein thyroid receptor interacting protein 5

## Disease

- [Alzheimer disease](#)
- [Diabetes Mellitus](#)
- [Genetic Predisposition to Disease](#)
- [Glucose Intolerance](#)