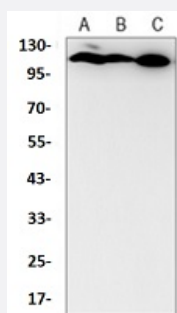


RecomAb™

CLSTN1 recombinant monoclonal antibody

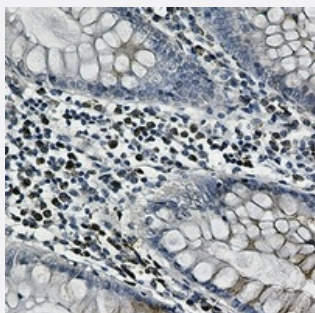
Catalog # RAB02581 Size 100 uL

Applications



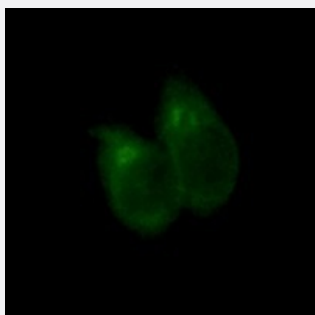
Western Blot

Western blot analysis of mouse brain (A), HeLa (B), CHOK1 (C) whole cell lysates with CLSTN1 recombinant monoclonal antibody (Cat # RAB02581).



Immunohistochemistry (Formalin/PFA-fixed paraffin-embedded sections)

Immunohistochemical analysis of human colon cancer formalin fixed paraffin embedded tissue section using CLSTN1 recombinant monoclonal antibody (Cat # RAB02581). The section was pre-treated using heat mediated antigen retrieval with sodium citrate buffer (pH 6.65). The section was then incubated with the antibody at room temperature and detected using an HRP conjugated compact polymer system. DAB was used as the chromogen. The section was then counterstained with haematoxylin and mounted with DPX.



Immunofluorescence

Immunofluorescent analysis of HeLa cells with CLSTN1 recombinant monoclonal antibody (Cat # RAB02581). Formalin-fixed cells were permeabilized with 0.1% Triton X-100 in TBS for 5-10 minutes and blocked with 3% BSA-PBS for 30 minutes at room temperature. Cells were probed with the primary antibody in 3% BSA-PBS and incubated overnight at 4 °C in a humidified chamber. Cells were washed with PBST and incubated with a AF488-conjugated secondary antibody (green) in PBS at room temperature in the dark.

Specification

Product Description	Rabbit recombinant monoclonal antibody raised against human CLSTN1.
Antibody Species	Rabbit
Immunogen	Original antibody is raised against a synthetic peptide of human CLSTN1.
Theoretical MW (kDa)	110
Reactivity	Hamster, Human, Mouse
Specificity	Recognizes endogenous levels of CLSTN1 protein.
Form	Liquid
Purification	Immunogen affinity chromatography
Isotype	IgG
Recommend Usage	Immunocytochemistry (1:50-1:100) Immunofluorescence (1:50-1:100) Immunohistochemistry (1:50-1:100) Western Blot (1:500-1:1000)
Storage Buffer	In 50mM Tris-Glycine, pH 7.4 (0.15M NaCl, 50% Glycerol, 0.01% Sodium azide and 0.05% BSA)
Storage Instruction	Store at 4°C short term. Aliquot and store at -20°C long term. Avoid freeze-thaw cycles.
Note	This product contains sodium azide: a POISONOUS AND HAZARDOUS SUBSTANCE which should be handled by trained staff only.

Applications

- Western Blot

Western blot analysis of mouse brain (A), Hela (B), CHOK1 (C) whole cell lysates with CLSTN1 recombinant monoclonal antibody (Cat # RAB02581).

- Immunohistochemistry (Formalin/PFA-fixed paraffin-embedded sections)

Immunohistochemical analysis of human colon cancer formalin fixed paraffin embedded tissue section using CLSTN1 recombinant monoclonal antibody (Cat # RAB02581). The section was pre-treated using heat mediated antigen retrieval with sodium citrate buffer (pH 6.65). The section was then incubated with the antibody at room temperature and detected using an HRP conjugated compact polymer system. DAB was used as the chromogen. The section was then counterstained with haematoxylin and mounted with DPX.

- Immunocytochemistry
- Immunofluorescence

Immunofluorescent analysis of HeLa cells with CLSTN1 recombinant monoclonal antibody (Cat # RAB02581). Formalin-fixed cells were permeabilized with 0.1% Triton X-100 in TBS for 5-10 minutes and blocked with 3% BSA-PBS for 30 minutes at room temperature. Cells were probed with the primary antibody in 3% BSA-PBS and incubated overnight at 4 °C in a humidified chamber. Cells were washed with PBST and incubated with a AF488-conjugated secondary antibody (green) in PBS at room temperature in the dark.

Gene Info — CLSTN1

Entrez GeneID	22883
Protein Accession#	O94985
Gene Name	CLSTN1
Gene Alias	ALC-ALPHA, CSTN1, FLJ32258, KIAA0911, PIK3CD, XB31alpha, alcalpha1, alcalpha2
Gene Description	calsyntenin 1
Omim ID	611321
Gene Ontology	Hyperlink
Other Designations	OTTHUMP00000001597 OTTHUMP00000001598 alcadein alpha 1 non-classical cadherin XB31alpha1