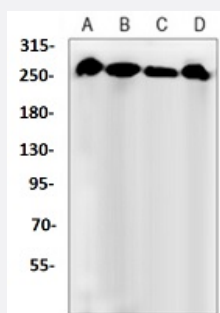


RecomAb™

FLNB (Phospho S2152/2107) recombinant monoclonal antibody

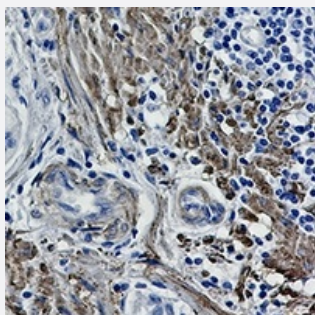
Catalog # RAB02571 Size 100 uL

Applications



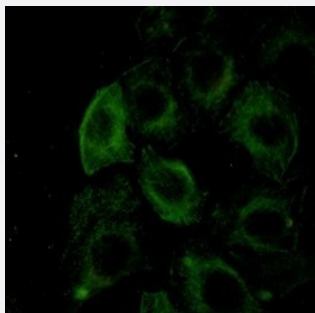
Western Blot (Cell lysate)

Western blot analysis of HeLa (A), A549 (B), U2OS (C), C6 (D) whole cell lysates with FLNB (Phospho S2152/2107) recombinant monoclonal antibody (Cat # RAB02571).



Immunohistochemistry (Formalin/PFA-fixed paraffin-embedded sections)

Immunohistochemical analysis of human cholangiocarcinoma formalin fixed paraffin embedded tissue section using FLNB (Phospho S2152/2107) recombinant monoclonal antibody (Cat # RAB02571). The section was pre-treated using heat mediated antigen retrieval with sodium citrate buffer (pH 6.47). The section was then incubated with the antibody at room temperature and detected using an HRP conjugated compact polymer system. DAB was used as the chromogen. The section was then counterstained with haematoxylin and mounted with DPX.



Immunofluorescence

Immunofluorescent analysis of A549 cells with FLNB (Phospho S2152/2107) recombinant monoclonal antibody (Cat # RAB02571). Formalin-fixed cells were permeabilized with 0.1% Triton X-100 in TBS for 5-10 minutes and blocked with 3% BSA-PBS for 30 minutes at room temperature. Cells were probed with the primary antibody in 3% BSA-PBS and incubated overnight at 4 °C in a humidified chamber. Cells were washed with PBST and incubated with a AF488-conjugated secondary antibody (green) in PBS at room temperature in the dark.

Specification

Product Description	Rabbit recombinant monoclonal antibody raised against human FLNB.
Antibody Species	Rabbit
Immunogen	Original antibody is raised against a synthetic phosphopeptide corresponding to residues surrounding Ser2152 of human FLNB.
Theoretical MW (kDa)	280
Reactivity	Human, Rat
Specificity	Recognizes endogenous levels of Filamin A/B (pS2152/2107) protein.
Form	Liquid
Purification	Immunogen affinity chromatography
Isotype	IgG
Recommend Usage	Immunocytochemistry (1:50-1:100) Immunofluorescence (1:50-1:100) Immunohistochemistry (1:50-1:100) Western Blot (1:500-1:1000)
Storage Buffer	In 50mM Tris-Glycine, pH 7.4 (0.15M NaCl, 50% Glycerol, 0.01% Sodium azide and 0.05% BSA)
Storage Instruction	Store at 4°C short term. Aliquot and store at -20°C long term. Avoid freeze-thaw cycles.
Note	This product contains sodium azide: a POISONOUS AND HAZARDOUS SUBSTANCE which should be handled by trained staff only.

Applications

- Western Blot (Cell lysate)

Western blot analysis of HeLa (A), A549 (B), U2OS (C), C6 (D) whole cell lysates with FLNB (Phospho S2152/2107) recombinant monoclonal antibody (Cat # RAB02571).

- Immunohistochemistry (Formalin/PFA-fixed paraffin-embedded sections)

Immunohistochemical analysis of human cholangiocarcinoma formalin fixed paraffin embedded tissue section using FLNB (Phospho S2152/2107) recombinant monoclonal antibody (Cat # RAB02571). The section was pre-treated using heat mediated antigen retrieval with sodium citrate buffer (pH 6.47). The section was then incubated with the antibody at room temperature and detected using an HRP conjugated compact polymer system. DAB was used as the chromogen. The section was then counterstained with haematoxylin and mounted with DPX.

- Immunocytochemistry
- Immunofluorescence

Immunofluorescent analysis of A549 cells with FLNB (Phospho S2152/2107) recombinant monoclonal antibody (Cat # RAB02571). Formalin-fixed cells were permeabilized with 0.1% Triton X-100 in TBS for 5-10 minutes and blocked with 3% BSA-PBS for 30 minutes at room temperature. Cells were probed with the primary antibody in 3% BSA-PBS and incubated overnight at 4 °C in a hidified chamber. Cells were washed with PBST and incubated with a AF488-conjugated secondary antibody (green) in PBS at room temperature in the dark.

Gene Info — FLNB

Entrez GeneID	2317
Protein Accession#	O75369
Gene Name	FLNB
Gene Alias	ABP-278, AOI, DKFZp686A1668, DKFZp686O033, FH1, FLN1L, LRS1, SCT, TABP, TAP
Gene Description	filamin B, beta (actin binding protein 278)
Omim ID	108720 108721 112310 150250 272460 603381
Gene Ontology	Hyperlink
Gene Summary	O
Other Designations	beta filamin filamin 1 (actin-binding protein-280)-like filamin B, beta (actin-binding protein-278)

Pathway

- [Focal adhesion](#)
- [MAPK signaling pathway](#)

Disease

- [Cleft Lip](#)
- [Cleft Palate](#)
- [Dominance](#)

- [Genetic Predisposition to Disease](#)
- [Schizophrenia](#)
- [Tobacco Use Disorder](#)