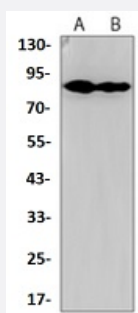


RecomAb™

# RPS6KA2 recombinant monoclonal antibody

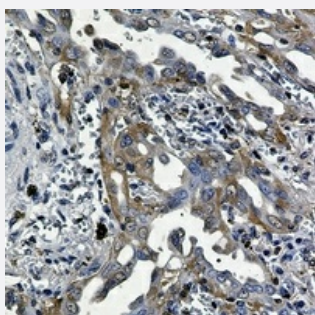
Catalog # RAB02565      Size 100 uL

## Applications



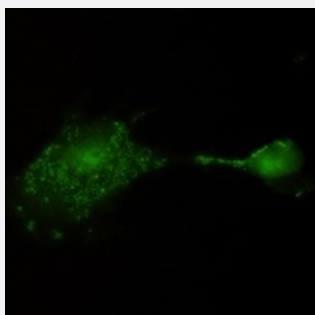
### Western Blot (Cell lysate)

Western blot analysis of CHOK1 (A), HeLa (B) whole cell lysates with RPS6KA2 recombinant monoclonal antibody (Cat # RAB02565).



### Immunohistochemistry (Formalin/PFA-fixed paraffin-embedded sections)

Immunohistochemical analysis of human lung cancer formalin fixed paraffin embedded tissue section using RPS6KA2 recombinant monoclonal antibody (Cat # RAB02565). The section was pre-treated using heat mediated antigen retrieval with sodium citrate buffer (pH 6.89). The section was then incubated with the antibody at room temperature and detected using an HRP conjugated compact polymer system. DAB was used as the chromogen. The section was then counterstained with haematoxylin and mounted with DPX.



### Immunofluorescence

Immunofluorescent analysis of U87MG cells with RPS6KA2 recombinant monoclonal antibody (Cat # RAB02565). Formalin-fixed cells were permeabilized with 0.1% Triton X-100 in TBS for 5-10 minutes and blocked with 3% BSA-PBS for 30 minutes at room temperature. Cells were probed with the primary antibody in 3% BSA-PBS and incubated overnight at 4 °C in a humidified chamber. Cells were washed with PBST and incubated with a AF488-conjugated secondary antibody (green) in PBS at room temperature in the dark.

## Specification

<b>Product Description</b>	Rabbit recombinant monoclonal antibody raised against human RPS6KA2.
<b>Antibody Species</b>	Rabbit
<b>Immunogen</b>	Original antibody is raised against a synthetic peptide of human RPS6KA2.
<b>Theoretical MW (kDa)</b>	83
<b>Reactivity</b>	Hamster, Human
<b>Specificity</b>	Recognizes endogenous levels of RSK3 protein.
<b>Form</b>	Liquid
<b>Purification</b>	Immunogen affinity chromatography
<b>Isotype</b>	IgG
<b>Recommend Usage</b>	Immunocytochemistry (1:50-1:100) Immunofluorescence (1:50-1:100) Immunohistochemistry (1:50-1:100) Immunoprecipitation (1:10-1:50) Western Blot (1:500-1:1000)
<b>Storage Buffer</b>	In 50mM Tris-Glycine, pH 7.4 (0.15M NaCl, 50% Glycerol, 0.01% Sodium azide and 0.05% BSA)
<b>Storage Instruction</b>	Store at 4°C short term. Aliquot and store at -20°C long term. Avoid freeze-thaw cycles.
<b>Note</b>	This product contains sodium azide: a POISONOUS AND HAZARDOUS SUBSTANCE which should be handled by trained staff only.

## Applications

- Western Blot (Cell lysate)

Western blot analysis of CHOK1 (A), Hela (B) whole cell lysates with RPS6KA2 recombinant monoclonal antibody (Cat # RAB02565).

- Immunohistochemistry (Formalin/PFA-fixed paraffin-embedded sections)

Immunohistochemical analysis of human lung cancer formalin fixed paraffin embedded tissue section using RPS6KA2 recombinant monoclonal antibody (Cat # RAB02565). The section was pre-treated using heat mediated antigen retrieval with sodium citrate buffer (pH 6.89). The section was then incubated with the antibody at room temperature and detected using an HRP conjugated compact polymer system. DAB was used as the chromogen. The section was then counterstained with haematoxylin and mounted with DPX.

- Immunocytochemistry

- Immunofluorescence

Immunofluorescent analysis of U87MG cells with RPS6KA2 recombinant monoclonal antibody (Cat # RAB02565). Formalin-fixed cells were permeabilized with 0.1% Triton X-100 in TBS for 5-10 minutes and blocked with 3% BSA-PBS for 30 minutes at room temperature. Cells were probed with the primary antibody in 3% BSA-PBS and incubated overnight at 4 °C in a hidified chamber. Cells were washed with PBST and incubated with a AF488-conjugated secondary antibody (green) in PBS at room temperature in the dark.

- Immunoprecipitation

## Gene Info — RPS6KA2

Entrez GeneID	<a href="#">6196</a>
Protein Accession#	<a href="#">Q15349</a>
Gene Name	RPS6KA2
Gene Alias	HU-2, MAPKAPK1C, RSK, RSK3, S6K-alpha, S6K-alpha2, p90-RSK3, pp90RSK3
Gene Description	ribosomal protein S6 kinase, 90kDa, polypeptide 2
Omim ID	<a href="#">601685</a>
Gene Ontology	<a href="#">Hyperlink</a>
Gene Summary	This gene encodes a member of the RSK (ribosomal S6 kinase) family of serine/threonine kinase s. This kinase contains 2 non-identical kinase catalytic domains and phosphorylates various subst rates, including members of the mitogen-activated kinase (MAPK) signalling pathway. The activity of this protein has been implicated in controlling cell growth and differentiation. Alternate transcript ional splice variants, encoding different isoforms, have been characterized. [provided by RefSeq
Other Designations	ribosomal S6 kinase 3 ribosomal protein S6 kinase alpha 2 ribosomal protein S6 kinase, 90kD, p olypeptide 2

## Pathway

- [Long-term potentiation](#)
- [MAPK signaling pathway](#)
- [mTOR signaling pathway](#)
- [Neurotrophin signaling pathway](#)

## Disease

- [Tobacco Use Disorder](#)