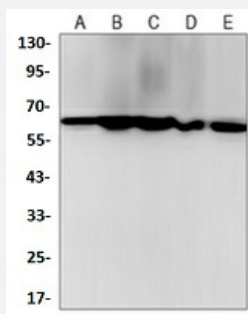


RecomAb™

YY1 recombinant monoclonal antibody

Catalog # RAB02560 Size 100 uL

Applications



Western Blot

Western blot analysis of K562 (A), rat brain (B), C6 (C), NIH3T3 (D), HeLa (E) whole cell lysates with YY1 recombinant monoclonal antibody (Cat # RAB02560).

Specification

Product Description	Rabbit recombinant monoclonal antibody raised against human YY1.
Antibody Species	Rabbit
Immunogen	Original antibody is raised against a synthetic peptide of human YY1.
Theoretical MW (kDa)	65
Reactivity	Human, Mouse, Rat
Specificity	Recognizes endogenous levels of YY1 protein.
Form	Liquid
Purification	Immunogen affinity chromatography
Isotype	IgG
Recommend Usage	Immunoprecipitation (1:10-1:50) Western Blot (1:500-1:1000)
Storage Buffer	In 50mM Tris-Glycine, pH 7.4 (0.15M NaCl, 50% Glycerol, 0.01% Sodium azide and 0.05% BSA)

Storage Instruction

Store at 4°C short term.
Aliquot and store at -20°C long term.
Avoid freeze-thaw cycles.

Note

This product contains sodium azide: a POISONOUS AND HAZARDOUS SUBSTANCE which should be handled by trained staff only.

Applications

- Western Blot

Western blot analysis of K562 (A), rat brain (B), C6 (C), NIH3T3 (D), Hela (E) whole cell lysates with YY1 recombinant monoclonal antibody (Cat # RAB02560).

Gene Info — YY1

Entrez GeneID [7528](#)

Protein Accession# [P25490](#)

Gene Name YY1

Gene Alias DELTA, INO80S, NF-E1, UCRBP, YIN-YANG-1

Gene Description YY1 transcription factor

Omim ID [600013](#)

Gene Ontology [Hyperlink](#)

Gene Summary YY1 is a ubiquitously distributed transcription factor belonging to the GLI-Kruppel class of zinc finger proteins. The protein is involved in repressing and activating a diverse number of promoters. YY1 may direct histone deacetylases and histone acetyltransferases to a promoter in order to activate or repress the promoter, thus implicating histone modification in the function of YY1. [provided by RefSeq]

Other Designations INO80 complex subunit S|Yin and Yang 1 protein

Disease

- [Cardiovascular Diseases](#)
- [Diabetes Mellitus](#)
- [Edema](#)