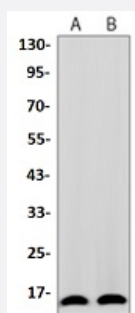


RecomAb™

TOMM20 recombinant monoclonal antibody

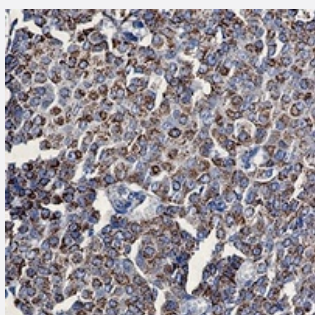
Catalog # RAB02548 Size 100 uL

Applications



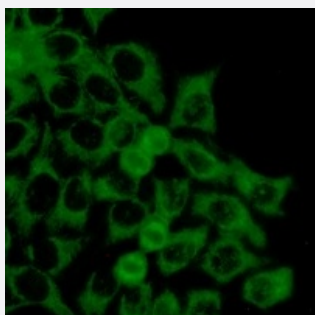
Western Blot (Cell lysate)

Western blot analysis of HeLa (A), CHOK1 (B) whole cell lysates with TOMM20 recombinant monoclonal antibody (Cat # RAB02548).



Immunohistochemistry (Formalin/PFA-fixed paraffin-embedded sections)

Immunohistochemical analysis of human breast carcinoma formalin fixed paraffin embedded tissue section using TOMM20 recombinant monoclonal antibody (Cat # RAB02548). The section was pre-treated using heat mediated antigen retrieval with sodium citrate buffer (pH 6.17). The section was then incubated with the antibody at room temperature and detected using an HRP conjugated compact polymer system. DAB was used as the chromogen. The section was then counterstained with haematoxylin and mounted with DPX.



Immunofluorescence

Immunofluorescent analysis of HeLa cells with TOMM20 recombinant monoclonal antibody (Cat # RAB02548). Formalin-fixed cells were permeabilized with 0.1% Triton X-100 in TBS for 5-10 minutes and blocked with 3% BSA-PBS for 30 minutes at room temperature. Cells were probed with the primary antibody in 3% BSA-PBS and incubated overnight at 4 °C in a humidified chamber. Cells were washed with PBST and incubated with a AF488-conjugated secondary antibody (green) in PBS at room temperature in the dark.

Specification

Product Description	Rabbit recombinant monoclonal antibody raised against human TOMM20.
Antibody Species	Rabbit
Immunogen	Original antibody is raised against recombinant protein of human TOMM20.
Theoretical MW (kDa)	16
Reactivity	Hamster, Human
Specificity	Recognizes endogenous levels of TOM20 protein.
Form	Liquid
Purification	Immunogen affinity chromatography
Isotype	IgG
Recommend Usage	Immunocytochemistry (1:50-1:100) Immunofluorescence (1:50-1:100) Immunohistochemistry (1:50-1:100) Western Blot (1:500-1:1000)
Storage Buffer	In 50mM Tris-Glycine, pH 7.4 (0.15M NaCl, 50% Glycerol, 0.01% Sodium azide and 0.05% BSA)
Storage Instruction	Store at 4°C short term. Aliquot and store at -20°C long term. Avoid freeze-thaw cycles.
Note	This product contains sodium azide: a POISONOUS AND HAZARDOUS SUBSTANCE which should be handled by trained staff only.

Applications

- Western Blot (Cell lysate)

Western blot analysis of Hela (A), CHOK1 (B) whole cell lysates with TOMM20 recombinant monoclonal antibody (Cat # RAB02548).

- Immunohistochemistry (Formalin/PFA-fixed paraffin-embedded sections)

Immunohistochemical analysis of human breast carcinoma formalin fixed paraffin embedded tissue section using TOMM20 recombinant monoclonal antibody (Cat # RAB02548). The section was pre-treated using heat mediated antigen retrieval with sodium citrate buffer (pH 6.17). The section was then incubated with the antibody at room temperature and detected using an HRP conjugated compact polymer system. DAB was used as the chromogen. The section was then counterstained with haematoxylin and mounted with DPX.

- Immunocytochemistry
- Immunofluorescence

Immunofluorescent analysis of HeLa cells with TOMM20 recombinant monoclonal antibody (Cat # RAB02548). Formalin-fixed cells were permeabilized with 0.1% Triton X-100 in TBS for 5-10 minutes and blocked with 3% BSA-PBS for 30 minutes at room temperature. Cells were probed with the primary antibody in 3% BSA-PBS and incubated overnight at 4 °C in a humidified chamber. Cells were washed with PBST and incubated with a AF488-conjugated secondary antibody (green) in PBS at room temperature in the dark.

Gene Info — TOMM20

Entrez GeneID	9804
Protein Accession#	Q15388
Gene Name	TOMM20
Gene Alias	KIAA0016, MAS20, MGC117367, MOM19, TOM20
Gene Description	translocase of outer mitochondrial membrane 20 homolog (yeast)
Omim ID	601848
Gene Ontology	Hyperlink
Other Designations	OTTHUMP00000037593 translocase of outer mitochondrial membrane 20 homolog translocase of outer mitochondrial membrane 20 homolog type II