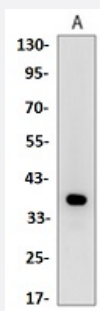


RecomAb™

# SYP recombinant monoclonal antibody

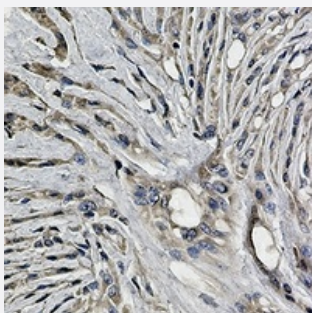
Catalog # RAB02543      Size 100 uL

## Applications



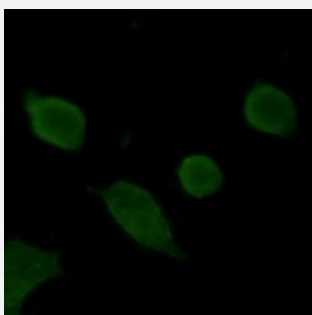
### Western Blot (Tissue lysate)

Western blot analysis of rat brain (A) whole cell lysates with SYP recombinant monoclonal antibody (Cat # RAB02543).



### Immunohistochemistry (Formalin/PFA-fixed paraffin-embedded sections)

Immunohistochemical analysis of human brain formalin fixed paraffin embedded tissue section using SYP recombinant monoclonal antibody (Cat # RAB02543). The section was pre-treated using heat mediated antigen retrieval with sodium citrate buffer (pH 6.0). The section was then incubated with the antibody at room temperature and detected using an HRP conjugated compact polymer system. DAB was used as the chromogen. The section was then counterstained with haematoxylin and mounted with DPX.



### Immunofluorescence

Immunofluorescent analysis of NIH3T3 cells with SYP recombinant monoclonal antibody (Cat # RAB02543). Formalin-fixed cells were permeabilized with 0.1% Triton X-100 in TBS for 5-10 minutes and blocked with 3% BSA-PBS for 30 minutes at room temperature. Cells were probed with the primary antibody in 3% BSA-PBS and incubated overnight at 4 °C in a humidified chamber. Cells were washed with PBST and incubated with a AF488-conjugated secondary antibody (green) in PBS at room temperature in the dark.

## Specification

<b>Product Description</b>	Rabbit recombinant monoclonal antibody raised against human SYP.
<b>Antibody Species</b>	Rabbit
<b>Immunogen</b>	Original antibody is raised against a synthetic peptide of human SYP.
<b>Theoretical MW (kDa)</b>	38
<b>Reactivity</b>	Human, Rat
<b>Specificity</b>	Recognizes endogenous levels of Synaptophysin protein.
<b>Form</b>	Liquid
<b>Purification</b>	Immunogen affinity chromatography
<b>Isotype</b>	IgG
<b>Recommend Usage</b>	Immunocytochemistry (1:50-1:100) Immunofluorescence (1:50-1:100) Immunohistochemistry (1:50-1:100) Western Blot (1:500-1:1000)
<b>Storage Buffer</b>	In 50mM Tris-Glycine, pH 7.4 (0.15M NaCl, 50% Glycerol, 0.01% Sodium azide and 0.05% BSA)
<b>Storage Instruction</b>	Store at 4°C short term. Aliquot and store at -20°C long term. Avoid freeze-thaw cycles.
<b>Note</b>	This product contains sodium azide: a POISONOUS AND HAZARDOUS SUBSTANCE which should be handled by trained staff only.

## Applications

- Western Blot (Tissue lysate)

Western blot analysis of rat brain (A) whole cell lysates with SYP recombinant monoclonal antibody (Cat # RAB02543).

- Immunohistochemistry (Formalin/PFA-fixed paraffin-embedded sections)

Immunohistochemical analysis of human brain formalin fixed paraffin embedded tissue section using SYP recombinant monoclonal antibody (Cat # RAB02543). The section was pre-treated using heat mediated antigen retrieval with sodium citrate buffer (pH 6.0). The section was then incubated with the antibody at room temperature and detected using an HRP conjugated compact polymer system. DAB was used as the chromogen. The section was then counterstained with haematoxylin and mounted with DPX.

- Immunocytochemistry
- Immunofluorescence

Immunofluorescent analysis of NIH3T3 cells with SYP recombinant monoclonal antibody (Cat # RAB02543). Formalin-fixed cells were permeabilized with 0.1% Triton X-100 in TBS for 5-10 minutes and blocked with 3% BSA-PBS for 30 minutes at room temperature. Cells were probed with the primary antibody in 3% BSA-PBS and incubated overnight at 4 °C in a humidified chamber. Cells were washed with PBST and incubated with a AF488-conjugated secondary antibody (green) in PBS at room temperature in the dark.

## Gene Info — SYP

Entrez GeneID	<a href="#">6855</a>
Protein Accession#	<a href="#">P08247</a>
Gene Name	SYP
Gene Alias	-
Gene Description	synaptophysin
Omim ID	<a href="#">313475</a>
Gene Ontology	<a href="#">Hyperlink</a>
Gene Summary	Synaptophysin (p38) is an integral membrane protein of small synaptic vesicles in brain and endocrine cells.[supplied by OMIM]
Other Designations	major synaptic vesicle protein P38

## Disease

- [Attention Deficit Disorder with Hyperactivity](#)
- [Genetic Predisposition to Disease](#)