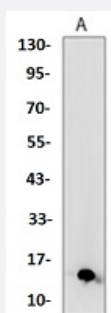


RecomAb™

S100A4 recombinant monoclonal antibody

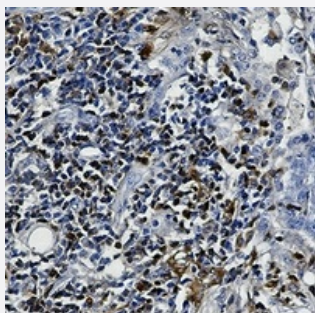
Catalog # RAB02538 Size 100 uL

Applications



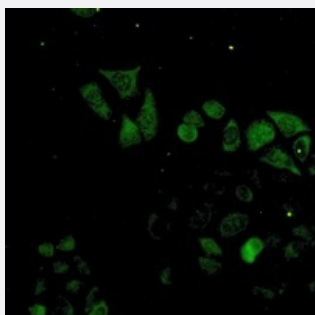
Western Blot (Cell lysate)

Western blot analysis of HeLa (A) whole cell lysates with S100A4 recombinant monoclonal antibody (Cat # RAB02538).



Immunohistochemistry (Formalin/PFA-fixed paraffin-embedded sections)

Immunohistochemical analysis of human lung cancer formalin fixed paraffin embedded tissue section using S100A4 recombinant monoclonal antibody (Cat # RAB02538). The section was pre-treated using heat mediated antigen retrieval with sodium citrate buffer (pH 6.86). The section was then incubated with the antibody at room temperature and detected using an HRP conjugated compact polymer system. DAB was used as the chromogen. The section was then counterstained with haematoxylin and mounted with DPX.



Immunofluorescence

Immunofluorescent analysis of HeLa cells with S100A4 recombinant monoclonal antibody (Cat # RAB02538). Formalin-fixed cells were permeabilized with 0.1% Triton X-100 in TBS for 5-10 minutes and blocked with 3% BSA-PBS for 30 minutes at room temperature. Cells were probed with the primary antibody in 3% BSA-PBS and incubated overnight at 4 °C in a humidified chamber. Cells were washed with PBST and incubated with a AF488-conjugated secondary antibody (green) in PBS at room temperature in the dark.

Specification

Product Description	Rabbit recombinant monoclonal antibody raised against human S100A4.
Antibody Species	Rabbit
Immunogen	Original antibody is raised against a synthetic peptide of human S100A4.
Theoretical MW (kDa)	12
Reactivity	Human
Specificity	Recognizes endogenous levels of S100-A4 protein.
Form	Liquid
Purification	Immunogen affinity chromatography
Isotype	IgG
Recommend Usage	Immunocytochemistry (1:50-1:100) Immunofluorescence (1:50-1:100) Immunohistochemistry (1:50-1:100) Immunoprecipitation (1:10-1:50) Western Blot (1:500-1:1000)
Storage Buffer	In 50mM Tris-Glycine, pH 7.4 (0.15M NaCl, 50% Glycerol, 0.01% Sodium azide and 0.05% BSA)
Storage Instruction	Store at 4°C short term. Aliquot and store at -20°C long term. Avoid freeze-thaw cycles.
Note	This product contains sodium azide: a POISONOUS AND HAZARDOUS SUBSTANCE which should be handled by trained staff only.

Applications

- Western Blot (Cell lysate)

Western blot analysis of Hela (A) whole cell lysates with S100A4 recombinant monoclonal antibody (Cat # RAB02538).

- Immunohistochemistry (Formalin/PFA-fixed paraffin-embedded sections)

Immunohistochemical analysis of human lung cancer formalin fixed paraffin embedded tissue section using S100A4 recombinant monoclonal antibody (Cat # RAB02538). The section was pre-treated using heat mediated antigen retrieval with sodium citrate buffer (pH 6.86). The section was then incubated with the antibody at room temperature and detected using an HRP conjugated compact polymer system. DAB was used as the chromogen. The section was then counterstained with haematoxylin and mounted with DPX.

- Immunocytochemistry
- Immunofluorescence

Immunofluorescent analysis of HeLa cells with S100A4 recombinant monoclonal antibody (Cat # RAB02538). Formalin-fixed cells were permeabilized with 0.1% Triton X-100 in TBS for 5-10 minutes and blocked with 3% BSA-PBS for 30 minutes at room temperature. Cells were probed with the primary antibody in 3% BSA-PBS and incubated overnight at 4 °C in a humidified chamber. Cells were washed with PBST and incubated with a AF488-conjugated secondary antibody (green) in PBS at room temperature in the dark.

- Immunoprecipitation

Gene Info — S100A4

Entrez GeneID [6275](#)

Protein Accession# [P26447](#)

Gene Name S100A4

Gene Alias 18A2, 42A, CAPL, FSP1, MTS1, P9KA, PEL98

Gene Description S100 calcium binding protein A4

Omim ID [114210](#)

Gene Ontology [Hyperlink](#)

Gene Summary The protein encoded by this gene is a member of the S100 family of proteins containing 2 EF-hand calcium-binding motifs. S100 proteins are localized in the cytoplasm and/or nucleus of a wide range of cells, and involved in the regulation of a number of cellular processes such as cell cycle progression and differentiation. S100 genes include at least 13 members which are located as a cluster on chromosome 1q21. This protein may function in motility, invasion, and tubulin polymerization. Chromosomal rearrangements and altered expression of this gene have been implicated in tumor metastasis. Multiple alternatively spliced variants, encoding the same protein, have been identified. [provided by RefSeq]

Other Designations OTTHUMP00000015467|OTTHUMP00000015468|OTTHUMP00000015469|OTTHUMP00000032895|S100 calcium binding protein A4 (calcium protein, calvasculin, metastasin, murine placental homolog)|S100 calcium-binding protein A4|S100 calcium-binding protein A4 (calcium prote

Disease

- [Dermatitis](#)
- [Genetic Predisposition to Disease](#)

- [Liver Cirrhosis](#)