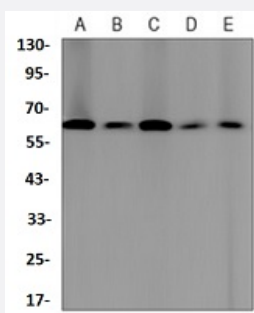


RecomAb™

MSN recombinant monoclonal antibody

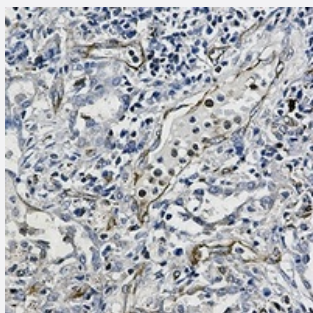
Catalog # RAB02521 Size 100 uL

Applications



Western Blot

Western blot analysis of mouse heart (A), CHOK1 (B), C6 (C), Jurkat (D) whole cell lysates with Moesin recombinant monoclonal antibody (Cat # RAB02521).



Immunohistochemistry (Formalin/PFA-fixed paraffin-embedded sections)

Immunohistochemical analysis of human lung cancer formalin fixed paraffin embedded tissue section using Moesin recombinant monoclonal antibody (Cat # RAB02521). The section was pre-treated using heat mediated antigen retrieval with sodium citrate buffer (pH 6.85). The section was then incubated with the antibody at room temperature and detected using an HRP conjugated compact polymer system. DAB was used as the chromogen. The section was then counterstained with haematoxylin and mounted with DPX.

Specification

Product Description	Rabbit recombinant monoclonal antibody raised against human MSN.
Antibody Species	Rabbit
Immunogen	Original antibody is raised against a synthetic peptide of human Moesin.
Theoretical MW (kDa)	68
Reactivity	Hamster, Human, Mouse, Rat

Specificity	Recognizes endogenous levels of Moesin protein.
Form	Liquid
Purification	Immunogen affinity chromatography
Isotype	IgG
Recommend Usage	Immunohistochemistry (1:50-1:100) Immunoprecipitation(1:10-1:50) Western Blot (1:500-1:1000) The optimal working dilution should be determined by the end user.
Storage Buffer	In 50mM Tris-Glycine, pH 7.4 (0.15M NaCl, 50% Glycerol, 0.01% Sodium azide and 0.05% BSA)
Storage Instruction	Store at 4°C short term. Aliquot and store at -20°C long term. Avoid freeze-thaw cycles.
Note	This product contains sodium azide: a POISONOUS AND HAZARDOUS SUBSTANCE which should be handled by trained staff only.

Applications

- Western Blot

Western blot analysis of mouse heart (A), CHOK1 (B), C6 (C), Jurkat (D) whole cell lysates with Moesin recombinant monoclonal antibody (Cat # RAB02521).

- Immunohistochemistry (Formalin/PFA-fixed paraffin-embedded sections)

Immunohistochemical analysis of human lung cancer formalin fixed paraffin embedded tissue section using Moesin recombinant monoclonal antibody (Cat # RAB02521). The section was pre-treated using heat mediated antigen retrieval with sodium citrate buffer (pH 6.85). The section was then incubated with the antibody at room temperature and detected using an HRP conjugated compact polymer system. DAB was used as the chromogen. The section was then counterstained with haematoxylin and mounted with DPX.

- Immunoprecipitation

Gene Info — MSN

Entrez GeneID	4478
Protein Accession#	P26038
Gene Name	MSN

Gene Alias	-
Gene Description	moesin
Omim ID	309845
Gene Ontology	Hyperlink
Gene Summary	Moesin (for membrane-organizing extension spike protein) is a member of the ERM family which includes ezrin and radixin. ERM proteins appear to function as cross-linkers between plasma membranes and actin-based cytoskeletons. Moesin is localized to filopodia and other membranous protrusions that are important for cell-cell recognition and signaling and for cell movement. [provided by RefSeq]
Other Designations	OTTHUMP00000023438

Pathway

- [Leukocyte transendothelial migration](#)
- [Regulation of actin cytoskeleton](#)