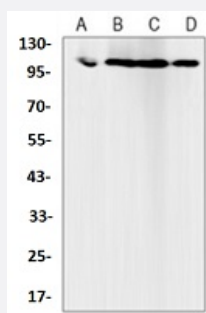


RecomAb™

# MCM2 recombinant monoclonal antibody

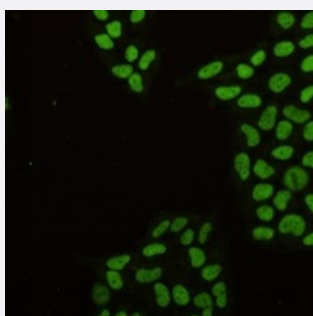
Catalog # RAB02519      Size 100 uL

## Applications



### Western Blot (Cell lysate)

Western blot analysis of K562 (A), C6 (B), NIH3T3 (C), HeLa (D) whole cell lysates with MCM2 recombinant monoclonal antibody (Cat # RAB02519).



### Immunofluorescence

Immunofluorescent analysis of HeLa cells with MCM2 recombinant monoclonal antibody (Cat # RAB02519). Formalin-fixed cells were permeabilized with 0.1% Triton X-100 in TBS for 5-10 minutes and blocked with 3% BSA-PBS for 30 minutes at room temperature. Cells were probed with the primary antibody in 3% BSA-PBS and incubated overnight at 4 °C in a humidified chamber. Cells were washed with PBST and incubated with a AF488-conjugated secondary antibody (green) in PBS at room temperature in the dark.

## Specification

Product Description	Rabbit recombinant monoclonal antibody raised against human MCM2.
Antibody Species	Rabbit
Immunogen	Original antibody is raised against a synthetic peptide of human MCM2.
Theoretical MW (kDa)	125
Reactivity	Human, Mouse, Rat
Specificity	Recognizes endogenous levels of MCM2 protein.

Form	Liquid
Purification	Immunogen affinity chromatography
Isotype	IgG
Recommend Usage	Immunocytochemistry (1:50-1:100) Immunofluorescence (1:50-1:100) Western Blot (1:500-1:1000) The optimal working dilution should be determined by the end user.
Storage Buffer	In 50mM Tris-Glycine, pH 7.4 (0.15M NaCl, 50% Glycerol, 0.01% Sodium azide and 0.05% BSA)
Storage Instruction	Store at 4°C short term. Aliquot and store at -20°C long term. Avoid freeze-thaw cycles.
Note	This product contains sodium azide: a POISONOUS AND HAZARDOUS SUBSTANCE which should be handled by trained staff only.

## Applications

- Western Blot (Cell lysate)

Western blot analysis of K562 (A), C6 (B), NIH3T3 (C), Hela (D) whole cell lysates with MCM2 recombinant monoclonal antibody (Cat # RAB02519).

- Immunocytochemistry

- Immunofluorescence

Immunofluorescent analysis of HeLa cells with MCM2 recombinant monoclonal antibody (Cat # RAB02519). Formalin-fixed cells were permeabilized with 0.1% Triton X-100 in TBS for 5-10 minutes and blocked with 3% BSA-PBS for 30 minutes at room temperature. Cells were probed with the primary antibody in 3% BSA-PBS and incubated overnight at 4 °C in a humidified chamber. Cells were washed with PBST and incubated with a AF488-conjugated secondary antibody (green) in PBS at room temperature in the dark.

## Gene Info — MCM2

Entrez GeneID	<a href="#">4171</a>
Protein Accession#	<a href="#">P49736</a>
Gene Name	MCM2

Gene Alias	BM28, CCNL1, CDCL1, D3S3194, KIAA0030, MGC10606, MITOTIN, cdc19
Gene Description	minichromosome maintenance complex component 2
Omim ID	<a href="#">116945</a>
Gene Ontology	<a href="#">Hyperlink</a>
Gene Summary	<p>The protein encoded by this gene is one of the highly conserved mini-chromosome maintenance proteins (MCM) that are involved in the initiation of eukaryotic genome replication. The hexameric protein complex formed by MCM proteins is a key component of the pre-replication complex (pre-RC) and may be involved in the formation of replication forks and in the recruitment of other DNA replication related proteins. This protein forms a complex with MCM4, 6, and 7, and has been shown to regulate the helicase activity of the complex. This protein is phosphorylated, and thus regulated by, protein kinases CDC2 and CDC7. [provided by RefSeq]</p>
Other Designations	DNA replication licensing factor MCM2 MCM2 minichromosome maintenance deficient 2, mitotin cell division cycle-like 1 cyclin-like 1 minichromosome maintenance deficient 2 (mitotin) nuclear protein BM28

## Pathway

- [Cell cycle](#)
- [DNA replication](#)

## Disease

- [Genetic Predisposition to Disease](#)
- [Ovarian Neoplasms](#)