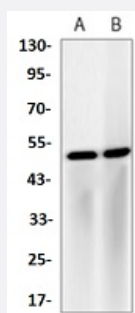


RecomAb™

# NR1H3 recombinant monoclonal antibody

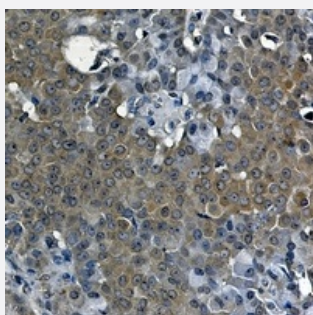
Catalog # RAB02518      Size 100 uL

## Applications



### Western Blot

Western blot analysis of Jurkat (A), rat brain (B) whole cell lysates with LXR alpha recombinant monoclonal antibody (Cat # RAB02518).



### Immunohistochemistry (Formalin/PFA-fixed paraffin-embedded sections)

Immunohistochemical analysis of human breast carcinoma formalin fixed paraffin embedded tissue section using LXR alpha recombinant monoclonal antibody (Cat # RAB02518). The section was pre-treated using heat mediated antigen retrieval with sodium citrate buffer (pH 6.16). The section was then incubated with the antibody at room temperature and detected using an HRP conjugated compact polymer system. DAB was used as the chromogen. The section was then counterstained with haematoxylin and mounted with DPX.

## Specification

Product Description	Rabbit recombinant monoclonal antibody raised against human NR1H3.
Antibody Species	Rabbit
Immunogen	Original antibody is raised against a synthetic peptide of human LXR alpha.
Theoretical MW (kDa)	50
Reactivity	Human, Rat

Specificity	Recognizes endogenous levels of LXR alpha protein.
Form	Liquid
Purification	Immunogen affinity chromatography
Isotype	IgG
Recommend Usage	Immunohistochemistry (1:50-1:100) Western Blot (1:500-1:1000) The optimal working dilution should be determined by the end user.
Storage Buffer	In 50mM Tris-Glycine, pH 7.4 (0.15M NaCl, 50% Glycerol, 0.01% Sodium azide and 0.05% BSA)
Storage Instruction	Store at 4°C short term. Aliquot and store at -20°C long term. Avoid freeze-thaw cycles.
Note	This product contains sodium azide: a POISONOUS AND HAZARDOUS SUBSTANCE which should be handled by trained staff only.

## Applications

- Western Blot

Western blot analysis of Jurkat (A), rat brain (B) whole cell lysates with LXR alpha recombinant monoclonal antibody (Cat # RAB02518).

- Immunohistochemistry (Formalin/PFA-fixed paraffin-embedded sections)

Immunohistochemical analysis of human breast carcinoma formalin fixed paraffin embedded tissue section using LXR alpha recombinant monoclonal antibody (Cat # RAB02518). The section was pre-treated using heat mediated antigen retrieval with sodium citrate buffer (pH 6.16). The section was then incubated with the antibody at room temperature and detected using an HRP conjugated compact polymer system. DAB was used as the chromogen. The section was then counterstained with haematoxylin and mounted with DPX.

## Gene Info — NR1H3

Entrez GeneID	<a href="#">10062</a>
Protein Accession#	<a href="#">Q13133</a>
Gene Name	NR1H3
Gene Alias	LXR-a, LXRA, RLD-1
Gene Description	nuclear receptor subfamily 1, group H, member 3

Omim ID	<a href="#">602423</a>
Gene Ontology	<a href="#">Hyperlink</a>
Gene Summary	group H
Other Designations	liver X receptor alpha liver X receptor, alpha liver X receptor-alpha

## Pathway

- [PPAR signaling pathway](#)

## Disease

- [Cardiovascular Diseases](#)
- [Coronary Artery Disease](#)
- [Diabetes Mellitus](#)
- [Dyslipidemias](#)
- [Edema](#)
- [Gallstones](#)
- [Genetic Predisposition to Disease](#)
- [Hypercholesterolemia](#)
- [Hyperlipidemia](#)
- [Kidney Failure](#)
- [Lymphoma](#)
- [Metabolic Syndrome X](#)
- [Obesity](#)