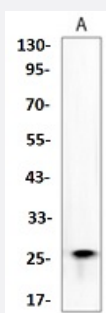


RecomAb™

LGALS3 recombinant monoclonal antibody

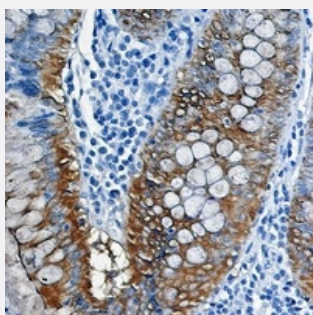
Catalog # RAB02502 Size 100 uL

Applications



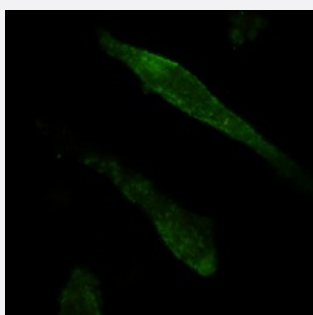
Western Blot (Cell lysate)

Western blot analysis of HeLa (A) whole cell lysates with Galectin 3 recombinant monoclonal antibody (Cat # RAB02502).



Immunohistochemistry (Formalin/PFA-fixed paraffin-embedded sections)

Immunohistochemical analysis of human colon cancer formalin fixed paraffin embedded tissue section using Galectin 3 recombinant monoclonal antibody (Cat # RAB02502). The section was pre-treated using heat mediated antigen retrieval with sodium citrate buffer (pH 6.58). The section was then incubated with the antibody at room temperature and detected using an HRP conjugated compact polymer system. DAB was used as the chromogen. The section was then counterstained with haematoxylin and mounted with DPX.



Immunofluorescence

Immunofluorescent analysis of Galectin 3 staining in U87MG cells using Galectin 3 recombinant monoclonal antibody (Cat # RAB02502). Formalin-fixed cells were permeabilized with 0.1% Triton X-100 in TBS for 5-10 minutes and blocked with 3% BSA-PBS for 30 minutes at room temperature. Cells were probed with the primary antibody in 3% BSA-PBS and incubated overnight at 4 °C in a humidified chamber. Cells were washed with PBST and incubated with a AF488-conjugated secondary antibody (green) in PBS at room temperature in the dark.

Specification

Product Description	Rabbit recombinant monoclonal antibody raised against human LGALS3.
Antibody Species	Rabbit
Immunogen	Original antibody is raised against recombinant protein of human Galectin 3.
Theoretical MW (kDa)	28
Reactivity	Human
Specificity	Recognizes endogenous levels of Galectin 3 protein.
Form	Liquid
Purification	Immunogen affinity chromatography
Isotype	IgG
Recommend Usage	Immunocytochemistry (1:50-1:100) Immunofluorescence (1:50-1:100) Immunohistochemistry (1:50-1:100) Immunoprecipitation (1:10-1:50) Western Blot (1:500-1:1000) The optimal working dilution should be determined by the end user.
Storage Buffer	In 50mM Tris-Glycine, pH 7.4 (0.15M NaCl, 50% Glycerol, 0.01% Sodium azide and 0.05% BSA)
Storage Instruction	Store at 4°C short term. Aliquot and store at -20°C long term. Avoid freeze-thaw cycles.
Note	This product contains sodium azide: a POISONOUS AND HAZARDOUS SUBSTANCE which should be handled by trained staff only.

Applications

- Western Blot (Cell lysate)

Western blot analysis of Hela (A) whole cell lysates with Galectin 3 recombinant monoclonal antibody (Cat # RAB02502).

- Immunohistochemistry (Formalin/PFA-fixed paraffin-embedded sections)

Immunohistochemical analysis of human colon cancer formalin fixed paraffin embedded tissue section using Galectin 3 recombinant monoclonal antibody (Cat # RAB02502). The section was pre-treated using heat mediated antigen retrieval with sodium citrate buffer (pH 6.58). The section was then incubated with the antibody at room temperature and detected using an HRP conjugated compact polymer system. DAB was used as the chromogen. The section was then counterstained with haematoxylin and mounted with DPX.

- Immunocytochemistry

- Immunofluorescence

Immunofluorescent analysis of Galectin 3 staining in U87MG cells using Galectin 3 recombinant monoclonal antibody (Cat # RAB02502). Formalin-fixed cells were permeabilized with 0.1% Triton X-100 in TBS for 5-10 minutes and blocked with 3% BSA-PBS for 30 minutes at room temperature. Cells were probed with the primary antibody in 3% BSA-PBS and incubated overnight at 4 °C in a humidified chamber. Cells were washed with PBST and incubated with a AF488-conjugated secondary antibody (green) in PBS at room temperature in the dark.

- Immunoprecipitation

Gene Info — LGALS3

Entrez GeneID	3958
Protein Accession#	P17931
Gene Name	LGALS3
Gene Alias	CBP35, GAL3, GALBP, GALIG, LGALS2, MAC2
Gene Description	lectin, galactoside-binding, soluble, 3
Omim ID	153619
Gene Ontology	Hyperlink
Gene Summary	lectin
Other Designations	IgE-binding protein MAC-2 antigen carbohydrate-binding protein 35 galactose-specific lectin 3 galactin 3 galectin-3 internal laminin-binding protein

Disease

- [Carcinoma](#)
- [Cardiovascular Diseases](#)

- [Diabetes Mellitus](#)
- [Diabetic Nephropathies](#)
- [Edema](#)
- [Genetic Predisposition to Disease](#)
- [Thyroid Neoplasms](#)