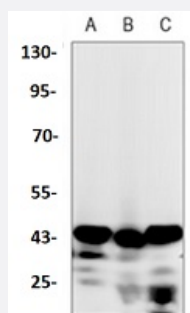


RecomAb™

## Ctsb recombinant monoclonal antibody

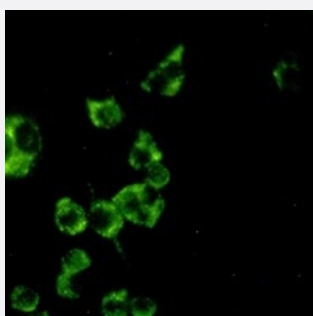
Catalog # RAB02480      Size 100 uL

### Applications



#### Western Blot

Western blot analysis of rat brain (A), C6 (B), NIH3T3 (C) whole cell lysates with Cathepsin B recombinant monoclonal antibody (Cat # RAB02480).



#### Immunofluorescence

Immunofluorescent analysis of Raw264.7 cells with Cathepsin B recombinant monoclonal antibody (Cat # RAB02480). Formalin-fixed cells were permeabilized with 0.1% Triton X-100 in TBS for 5-10 minutes and blocked with 3% BSA-PBS for 30 minutes at room temperature. Cells were probed with the primary antibody in 3% BSA-PBS and incubated overnight at 4 °C in a humidified chamber. Cells were washed with PBST and incubated with a AF488-conjugated secondary antibody (green) in PBS at room temperature in the dark.

### Specification

<b>Product Description</b>	Rabbit recombinant monoclonal antibody raised against mouse Ctsb.
<b>Antibody Species</b>	Rabbit
<b>Immunogen</b>	Original antibody is raised against recombinant protein of mouse Cathepsin B.
<b>Theoretical MW (kDa)</b>	43
<b>Reactivity</b>	Mouse, Rat

Specificity	Recognizes endogenous levels of Cathepsin B protein.
Form	Liquid
Purification	Immunogen affinity chromatography
Isotype	IgG
Recommend Usage	Immunocytochemistry (1:50-1:100) Immunofluorescence (1:50-1:100) Western Blot (1:500-1:1000) The optimal working dilution should be determined by the end user.
Storage Buffer	In 50mM Tris-Glycine, pH 7.4 (0.15M NaCl, 50% Glycerol, 0.01% Sodium azide and 0.05% BSA)
Storage Instruction	Store at 4°C short term. Aliquot and store at -20°C long term. Avoid freeze-thaw cycles.
Note	This product contains sodium azide: a POISONOUS AND HAZARDOUS SUBSTANCE which should be handled by trained staff only.

## Applications

- Western Blot

Western blot analysis of rat brain (A), C6 (B), NIH3T3 (C) whole cell lysates with Cathepsin B recombinant monoclonal antibody (Cat # RAB02480).

- Immunocytochemistry

- Immunofluorescence

Immunofluorescent analysis of Raw264.7 cells with Cathepsin B recombinant monoclonal antibody (Cat # RAB02480). Formalin-fixed cells were permeabilized with 0.1% Triton X-100 in TBS for 5-10 minutes and blocked with 3% BSA-PBS for 30 minutes at room temperature. Cells were probed with the primary antibody in 3% BSA-PBS and incubated overnight at 4 °C in a humidified chamber. Cells were washed with PBST and incubated with a AF488-conjugated secondary antibody (green) in PBS at room temperature in the dark.

## Gene Info — Ctsb

Entrez GeneID	<a href="#">13030</a>
Protein Accession#	<a href="#">P10605;P00787</a>
Gene Name	Ctsb

Gene Alias	-
Gene Description	cathepsin B
Gene Ontology	<a href="#">Hyperlink</a>
Other Designations	CATHEPSIN B PRECURSOR (CATHEPSIN B1)