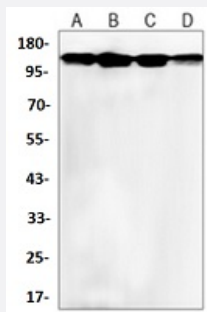


RecomAb™

BAG6 recombinant monoclonal antibody

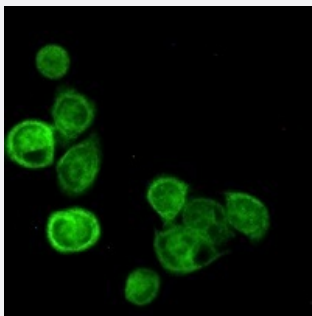
Catalog # RAB02474 Size 100 uL

Applications



Western Blot

Western blot analysis of K562 (A), rat brain (B), C6 (C), NIH3T3 (D) whole cell lysates with BAG6 recombinant monoclonal antibody (Cat # RAB02474).



Immunofluorescence

Immunofluorescent analysis of MCF7 cells with BAG6 recombinant monoclonal antibody (Cat # RAB02474). Formalin-fixed cells were permeabilized with 0.1% Triton X-100 in TBS for 5-10 minutes and blocked with 3% BSA-PBS for 30 minutes at room temperature. Cells were probed with the primary antibody in 3% BSA-PBS and incubated overnight at 4 °C in a humidified chamber. Cells were washed with PBST and incubated with a AF488-conjugated secondary antibody (green) in PBS at room temperature in the dark.

Specification

Product Description	Rabbit recombinant monoclonal antibody raised against human BAG6.
Antibody Species	Rabbit
Immunogen	Original antibody is raised against a synthetic peptide of human BAT3.
Theoretical MW (kDa)	150
Reactivity	Human, Mouse, Rat
Specificity	Recognizes endogenous levels of BAG6 protein.

Form	Liquid
Purification	Immunogen affinity chromatography
Isotype	IgG
Recommend Usage	Immunocytochemistry (1:50-1:100) Immunofluorescence (1:50-1:100) Western Blot (1:500-1:1000) The optimal working dilution should be determined by the end user.
Storage Buffer	In 50mM Tris-Glycine, pH 7.4 (0.15M NaCl, 50% Glycerol, 0.01% Sodium azide and 0.05% BSA)
Storage Instruction	Store at 4°C short term. Aliquot and store at -20°C long term. Avoid freeze-thaw cycles.
Note	This product contains sodium azide: a POISONOUS AND HAZARDOUS SUBSTANCE which should be handled by trained staff only.

Applications

- Western Blot

Western blot analysis of K562 (A), rat brain (B), C6 (C), NIH3T3 (D) whole cell lysates with BAG6 recombinant monoclonal antibody (Cat # RAB02474).

- Immunocytochemistry

- Immunofluorescence

Immunofluorescent analysis of MCF7 cells with BAG6 recombinant monoclonal antibody (Cat # RAB02474). Formalin-fixed cells were permeabilized with 0.1% Triton X-100 in TBS for 5-10 minutes and blocked with 3% BSA-PBS for 30 minutes at room temperature. Cells were probed with the primary antibody in 3% BSA-PBS and incubated overnight at 4 °C in a humidified chamber. Cells were washed with PBST and incubated with a AF488-conjugated secondary antibody (green) in PBS at room temperature in the dark.

Gene Info — BAT3

Entrez GeneID	7917
Protein Accession#	P46379
Gene Name	BAT3

Gene Alias	BAG-6, BAG6, D6S52E, G3
Gene Description	HLA-B associated transcript 3
Omim ID	142590
Gene Ontology	Hyperlink
Gene Summary	This gene was first characterized as part of a cluster of genes located within the human major histocompatibility complex class III region. This gene encodes a nuclear protein that is cleaved by caspase 3 and is implicated in the control of apoptosis. In addition, the protein forms a complex with E1A binding protein p300 and is required for the acetylation of p53 in response to DNA damage. Multiple transcript variants encoding different isoforms have been found for this gene. [provided by RefSeq]
Other Designations	HLA-B associated transcript-3 OTTHUMP00000029239 large proline-rich protein BAT3 scythe

Disease

- [Abortion](#)
- [Acquired Immunodeficiency Syndrome](#)
- [Adenocarcinoma](#)
- [Arthritis](#)
- [Carcinoma](#)
- [Cardiovascular Diseases](#)
- [Coronary Aneurysm](#)
- [Diabetes Mellitus](#)
- [Disease Progression](#)
- [Disease Susceptibility](#)
- [Edema](#)
- [Esophageal Neoplasms](#)
- [Gastroesophageal Reflux](#)
- [Genetic Predisposition to Disease](#)
- [Heart Defects](#)

- [HIV Seropositivity](#)
- [Lung Neoplasms](#)
- [Lupus Erythematosus](#)
- [Meningococcal Infections](#)
- [Mucocutaneous Lymph Node Syndrome](#)
- [Osteoarthritis](#)
- [Sepsis](#)