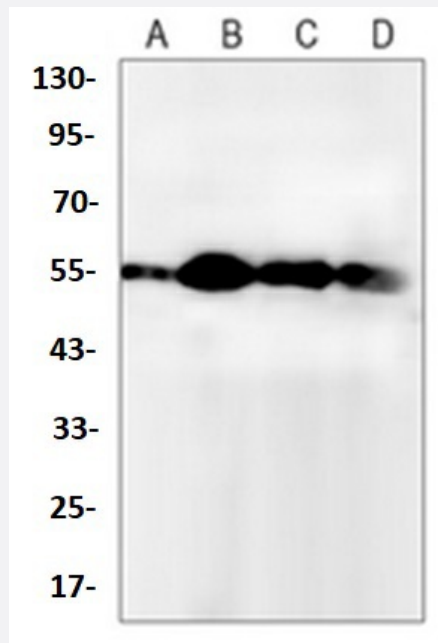


RecomAb™

# ATG5 recombinant monoclonal antibody

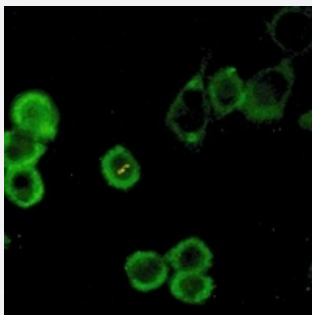
Catalog # RAB02469      Size 100 uL

## Applications



### Western Blot (Cell lysate)

Western blot analysis of Raw264.7 (A), K562 (B), C6 (C), HeLa (D) whole cell lysates with ATG5 recombinant monoclonal antibody (Cat # RAB02469).



### Immunofluorescence

Immunofluorescent analysis of MCF7 cells with ATG5 recombinant monoclonal antibody (Cat # RAB02469). Formalin-fixed cells were permeabilized with 0.1% Triton X-100 in TBS for 5-10 minutes and blocked with 3% BSA-PBS for 30 minutes at room temperature. Cells were probed with the primary antibody in 3% BSA-PBS and incubated overnight at 4 °C in a humidified chamber. Cells were washed with PBST and incubated with a AF488-conjugated secondary antibody (green) in PBS at room temperature in the dark.

## Specification

### Product Description

Rabbit recombinant monoclonal antibody raised against human ATG5.

Antibody Species	Rabbit
Immunogen	Original antibody is raised against a synthetic peptide of human APG5L/ATG5.
Theoretical MW (kDa)	55
Reactivity	Human, Mouse, Rat
Specificity	Recognizes endogenous levels of ATG5 protein.
Form	Liquid
Purification	Immunogen affinity chromatography
Isotype	IgG
Recommend Usage	Immunocytochemistry (1:50-1:100) Immunofluorescence (1:50-1:100) Immunoprecipitation(1:10-1:50) Western Blot (1:500-1:1000) The optimal working dilution should be determined by the end user.
Storage Buffer	In 50mM Tris-Glycine, pH 7.4 (0.15M NaCl, 50% Glycerol, 0.01% Sodium azide and 0.05% BSA)
Storage Instruction	Store at 4°C short term. Aliquot and store at -20°C long term. Avoid freeze-thaw cycles.
Note	This product contains sodium azide: a POISONOUS AND HAZARDOUS SUBSTANCE which should be handled by trained staff only.

## Applications

- Western Blot (Cell lysate)

Western blot analysis of Raw264.7 (A), K562 (B), C6 (C), Hela (D) whole cell lysates with ATG5 recombinant monoclonal antibody (Cat # RAB02469).

- Immunocytochemistry

- Immunofluorescence

Immunofluorescent analysis of MCF7 cells with ATG5 recombinant monoclonal antibody (Cat # RAB02469). Formalin-fixed cells were permeabilized with 0.1% Triton X-100 in TBS for 5-10 minutes and blocked with 3% BSA-PBS for 30 minutes at room temperature. Cells were probed with the primary antibody in 3% BSA-PBS and incubated overnight at 4 °C in a humidified chamber. Cells were washed with PBST and incubated with a AF488-conjugated secondary antibody (green) in PBS at room temperature in the dark.

- Immunoprecipitation

## Gene Info — ATG5

Entrez GeneID	<a href="#">9474</a>
Protein Accession#	<a href="#">Q9H1Y0</a>
Gene Name	ATG5
Gene Alias	APG5, APG5-LIKE, APG5L, ASP, hAPG5
Gene Description	ATG5 autophagy related 5 homolog (S. cerevisiae)
Omim ID	<a href="#">604261</a>
Gene Ontology	<a href="#">Hyperlink</a>
Gene Summary	S. cerevisiae)-like APG5 autophagy 5-like ATG5 autophagy related 5-like OTTHUMP00000017823 OTTHUMP00000017824 OTTHUMP00000040507 apoptosis specific protein
Other Designations	APG5 (autophagy 5, S. cerevisiae)-like APG5 autophagy 5-like ATG5 autophagy related 5-like OTTHUMP00000017823 OTTHUMP00000017824 OTTHUMP00000040507 apoptosis specific protein

## Pathway

- [Regulation of autophagy](#)

## Disease

- [Adenocarcinoma](#)
- [Colorectal Neoplasms](#)
- [Huntington Disease](#)
- [Microsatellite Instability](#)
- [Stomach Neoplasms](#)
- [Tobacco Use Disorder](#)