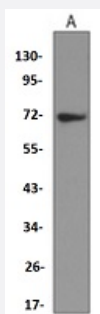


RecomAb™

# SOX9 recombinant monoclonal antibody

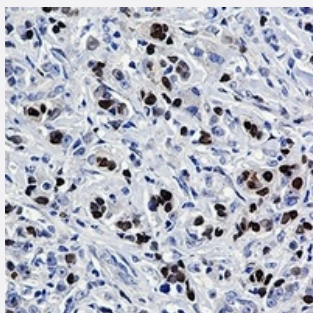
Catalog # RAB02448      Size 100 uL

## Applications



### Western Blot (Cell lysate)

Western blot analysis of NIH3T3 (A) whole cell lysates with SOX9 recombinant monoclonal antibody (Cat # RAB02448).



### Immunohistochemistry (Formalin/PFA-fixed paraffin-embedded sections)

Immunohistochemical analysis of human breast carcinoma formalin fixed paraffin embedded tissue section using SOX9 recombinant monoclonal antibody (Cat # RAB02448). The section was pre-treated using heat mediated antigen retrieval with sodium citrate buffer (pH 6.6). The section was then incubated with the antibody at room temperature and detected using an HRP conjugated compact polymer system. DAB was used as the chromogen. The section was then counterstained with haematoxylin and mounted with DPX.

## Specification

Product Description	Rabbit recombinant monoclonal antibody raised against human SOX9.
Antibody Species	Rabbit
Immunogen	Original antibody is raised against recombinant protein of human SOX9.
Theoretical MW (kDa)	70
Reactivity	Human, Mouse

Specificity	Recognizes endogenous levels of SOX9 protein.
Form	Liquid
Purification	Immunogen affinity chromatography
Isotype	IgG
Recommend Usage	Immunohistochemistry (1:50-1:100) Immunoprecipitation(1:10-1:50) Western Blot (1:500-1:1000) The optimal working dilution should be determined by the end user.
Storage Buffer	In 50mM Tris-Glycine, pH 7.4 (0.15M NaCl, 50% Glycerol, 0.01% Sodium azide and 0.05% BSA)
Storage Instruction	Store at 4°C short term. Aliquot and store at -20°C long term. Avoid freeze-thaw cycles.
Note	This product contains sodium azide: a POISONOUS AND HAZARDOUS SUBSTANCE which should be handled by trained staff only.

## Applications

- Western Blot (Cell lysate)

Western blot analysis of NIH3T3 (A) whole cell lysates with SOX9 recombinant monoclonal antibody (Cat # RAB02448).

- Immunohistochemistry (Formalin/PFA-fixed paraffin-embedded sections)

Immunohistochemical analysis of human breast carcinoma formalin fixed paraffin embedded tissue section using SOX9 recombinant monoclonal antibody (Cat # RAB02448). The section was pre-treated using heat mediated antigen retrieval with sodium citrate buffer (pH 6.6). The section was then incubated with the antibody at room temperature and detected using an HRP conjugated compact polymer system. DAB was used as the chromogen. The section was then counterstained with haematoxylin and mounted with DPX.

- Immunoprecipitation

## Gene Info — SOX9

Entrez GeneID	<a href="#">6662</a>
Protein Accession#	<a href="#">P48436</a>
Gene Name	SOX9
Gene Alias	CMD1, CMPD1, SRA1

<b>Gene Description</b>	SRY (sex determining region Y)-box 9
<b>Omim ID</b>	<a href="#">114290 608160</a>
<b>Gene Ontology</b>	<a href="#">Hyperlink</a>
<b>Gene Summary</b>	The protein encoded by this gene recognizes the sequence CCTTGAG along with other members of the HMG-box class DNA-binding proteins. It acts during chondrocyte differentiation and, with steroidogenic factor 1, regulates transcription of the anti-Muellerian hormone (AMH) gene. Deficiencies lead to the skeletal malformation syndrome campomelic dysplasia, frequently with sex reversal. [provided by RefSeq]
<b>Other Designations</b>	SRY (sex determining region Y)-box 9 (campomelic dysplasia, autosomal sex-reversal) SRY (sex-determining region Y)-box 9 (campomelic dysplasia, autosomal sex-reversal) SRY (sex-determining region Y)-box 9 protein campomelic dysplasia, autosomal sex-revers

## Disease

- [Cleft Lip](#)
- [Cleft Palate](#)
- [Genetic Predisposition to Disease](#)
- [Hypospadias](#)
- [Ovarian Neoplasms](#)
- [Sex determination](#)