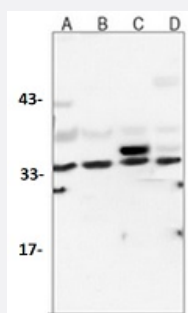


RecomAb™

LDHA recombinant monoclonal antibody

Catalog # RAB02445 Size 100 uL

Applications



Western Blot

Western blot analysis of Jurkat (A), rat brain (B), C6 (C), HeLa (D) whole cell lysates with LDHA recombinant monoclonal antibody (Cat # RAB02445).

Specification

Product Description	Rabbit recombinant monoclonal antibody raised against human LDHA.
Antibody Species	Rabbit
Immunogen	Original antibody is raised against a synthetic peptide of human Lactate Dehydrogenase.
Theoretical MW (kDa)	37
Reactivity	Human, Rat
Specificity	Recognizes endogenous levels of LDHA protein.
Form	Liquid
Purification	Immunogen affinity chromatography
Isotype	IgG

Recommend Usage	Immunocytochemistry (1:50-1:100) Immunofluorescence (1:50-1:100) Immunohistochemistry (1:50-1:100) Immunoprecipitation(1:10-1:50) Western Blot (1:500-1:1000) The optimal working dilution should be determined by the end user.
Storage Buffer	In 50mM Tris-Glycine, pH 7.4 (0.15M NaCl, 50% Glycerol, 0.01% Sodium azide and 0.05% BSA)
Storage Instruction	Store at 4°C short term. Aliquot and store at -20°C long term. Avoid freeze-thaw cycles.
Note	This product contains sodium azide: a POISONOUS AND HAZARDOUS SUBSTANCE which should be handled by trained staff only.

Applications

- Western Blot

Western blot analysis of Jurkat (A), rat brain (B), C6 (C), Hela (D) whole cell lysates with LDHA recombinant monoclonal antibody (Cat # RAB02445).

- Immunohistochemistry

- Immunocytochemistry

- Immunofluorescence

- Immunoprecipitation

Gene Info — LDHA

Entrez GeneID	3939
Protein Accession#	P00338
Gene Name	LDHA
Gene Alias	LDH-M, LDH1, PIG19
Gene Description	lactate dehydrogenase A
Omim ID	150000

Gene Ontology

[Hyperlink](#)

Gene Summary

The protein encoded by this gene catalyzes the conversion of L-lactate and NAD to pyruvate and NADH in the final step of anaerobic glycolysis. The protein is found predominantly in muscle tissue and belongs to the lactate dehydrogenase family. Mutations in this gene have been linked to exertional myoglobinuria. Multiple transcript variants encoding different isoforms have been found for this gene. The human genome contains several non-transcribed pseudogenes of this gene. [provided by RefSeq]

Other Designations

L-lactate dehydrogenase A|proliferation-inducing gene 19

Pathway

- [Cysteine and methionine metabolism](#)
- [Glycolysis / Gluconeogenesis](#)
- [Metabolic pathways](#)
- [Propanoate metabolism](#)
- [Pyruvate metabolism](#)

Disease

- [Coronary Disease](#)
- [Genetic Predisposition to Disease](#)
- [Hypertension](#)
- [Narcolepsy](#)
- [Panic Disorder](#)