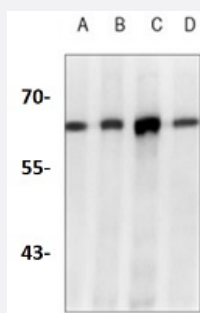


RecomAb™

ABCE1 recombinant monoclonal antibody

Catalog # RAB02417 Size 100 uL

Applications



Western Blot (Cell lysate)

Western blot analysis of K562 (A), C6 (B), NIH3T3 (C), HeLa (D) whole cell lysates with ABCE1 recombinant monoclonal antibody (Cat # RAB02417).

Specification

Product Description	Rabbit recombinant monoclonal antibody raised against recombinant ABCE1.
Antibody Species	Rabbit
Immunogen	Original antibody is raised against a synthetic peptide of human ABCE1.
Theoretical MW (kDa)	68
Reactivity	Human, Mouse, Rat
Specificity	Recognizes endogenous levels of ABCE1 protein.
Form	Liquid
Purification	Immunogen affinity chromatography
Isotype	IgG
Recommend Usage	Immunoprecipitation(1:10-1:50) Western Blot (1:500-1:1000)
Storage Buffer	In 50mM Tris-Glycine, pH 7.4 (0.15M NaCl, 50% Glycerol, 0.01% Sodium azide and 0.05% BSA)

Storage Instruction

Store at 4°C short term.
Aliquot and store at -20°C long term.
Avoid freeze-thaw cycles.

Note

This product contains sodium azide: a POISONOUS AND HAZARDOUS SUBSTANCE which should be handled by trained staff only.

Applications

- Western Blot (Cell lysate)

Western blot analysis of K562 (A), C6 (B), NIH3T3 (C), Hela (D) whole cell lysates with ABCE1 recombinant monoclonal antibody (Cat # RAB02417).

- Immunoprecipitation

Gene Info — ABCE1

Entrez GeneID[6059](#)**Protein Accession#**[P61221](#)**Gene Name**

ABCE1

Gene Alias

ABC38, OABP, RLI, RNASEL1, RNASELI, RNS4I

Gene Description

ATP-binding cassette, sub-family E (OABP), member 1

Omim ID[601213](#)**Gene Ontology**[Hyperlink](#)**Gene Summary**

The protein encoded by this gene is a member of the superfamily of ATP-binding cassette (ABC) transporters. ABC proteins transport various molecules across extra- and intra-cellular membranes. ABC genes are divided into seven distinct subfamilies (ABC1, MDR/TAP, MRP, ALD, OABP, GCN20, White). This protein is a member of the OABP subfamily. Alternatively referred to as the RNase L inhibitor, this protein functions to block the activity of ribonuclease L. Activation of ribonuclease L leads to inhibition of protein synthesis in the 2'-5'/RNase L system, the central pathway for viral interferon action. Two transcript variants encoding the same protein have been found for this gene. [provided by RefSeq]

Other Designations

ATP-binding cassette, sub-family E, member 1|RNase L inhibitor|ribonuclease L (2',5'-oligoadenylate synthetase-dependent) inhibitor

Disease

- [Genetic Predisposition to Disease](#)
- [Prostate cancer](#)
- [Prostatic Neoplasms](#)