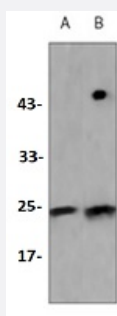


RecomAb™

TCF6 recombinant monoclonal antibody

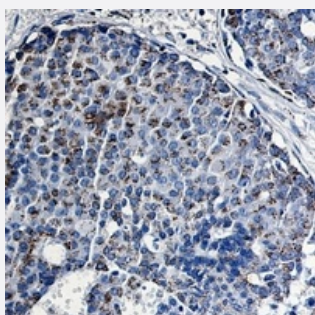
Catalog # RAB02415 Size 100 uL

Applications



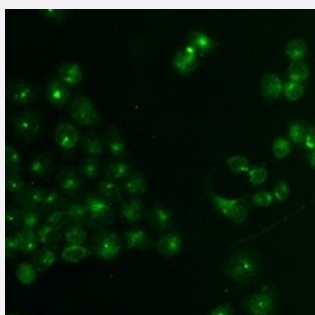
Western Blot (Cell lysate)

Western blot analysis of K562 (A), HeLa (B) whole cell lysates with TCF6 recombinant monoclonal antibody (Cat # RAB02415).



Immunohistochemistry (Formalin/PFA-fixed paraffin-embedded sections)

Immunohistochemical analysis of human breast carcinoma formalin fixed paraffin embedded tissue section using TCF6 recombinant monoclonal antibody (Cat # RAB02415). The section was pre-treated using heat mediated antigen retrieval with sodium citrate buffer (pH 6.3). The section was then incubated with the antibody at room temperature and detected using an HRP conjugated compact polymer system. DAB was used as the chromogen. The section was then counterstained with haematoxylin and mounted with DPX.



Immunofluorescence

Immunofluorescent analysis of HeLa cells with TCF6 recombinant monoclonal antibody (Cat # RAB02415). Formalin-fixed cells were permeabilized with 0.1% Triton X-100 in TBS for 5-10 minutes and blocked with 3% BSA-PBS for 30 minutes at room temperature. Cells were probed with the primary antibody in 3% BSA-PBS and incubated overnight at 4 °C in a humidified chamber. Cells were washed with PBST and incubated with a AF488-conjugated secondary antibody (green) in PBS at room temperature in the dark.

Specification

Product Description	Rabbit recombinant monoclonal antibody raised against recombinant TCF6.
Antibody Species	Rabbit
Immunogen	Original antibody is raised against a synthetic peptide of human mtTFA.
Theoretical MW (kDa)	23
Reactivity	Human
Specificity	Recognizes endogenous levels of TCF6 protein.
Form	Liquid
Purification	Immunogen affinity chromatography
Isotype	IgG
Recommend Usage	Immunocytochemistry (1:50-1:100) Immunofluorescence (1:50-1:100) Immunohistochemistry (1:50-1:100) Immunoprecipitation(1:10-1:50) Western Blot (1:500-1:1000)
Storage Buffer	In 50mM Tris-Glycine, pH 7.4 (0.15M NaCl, 50% Glycerol, 0.01% Sodium azide and 0.05% BSA)
Storage Instruction	Store at 4°C short term. Aliquot and store at -20°C long term. Avoid freeze-thaw cycles.
Note	This product contains sodium azide: a POISONOUS AND HAZARDOUS SUBSTANCE which should be handled by trained staff only.

Applications

- Western Blot (Cell lysate)

Western blot analysis of K562 (A), Hela (B) whole cell lysates with TCF6 recombinant monoclonal antibody (Cat # RAB02415).

- Immunohistochemistry (Formalin/PFA-fixed paraffin-embedded sections)

Immunohistochemical analysis of human breast carcinoma formalin fixed paraffin embedded tissue section using TCF6 recombinant monoclonal antibody (Cat # RAB02415). The section was pre-treated using heat mediated antigen retrieval with sodium citrate buffer (pH 6.3). The section was then incubated with the antibody at room temperature and detected using an HRP conjugated compact polymer system. DAB was used as the chromogen. The section was then counterstained with haematoxylin and mounted with DPX.

- Immunocytochemistry

- Immunofluorescence

Immunofluorescent analysis of HeLa cells with TCF6 recombinant monoclonal antibody (Cat # RAB02415). Formalin-fixed cells were permeabilized with 0.1% Triton X-100 in TBS for 5-10 minutes and blocked with 3% BSA-PBS for 30 minutes at room temperature. Cells were probed with the primary antibody in 3% BSA-PBS and incubated overnight at 4 °C in a humidified chamber. Cells were washed with PBST and incubated with a AF488-conjugated secondary antibody (green) in PBS at room temperature in the dark.

- Immunoprecipitation

Gene Info — TFAM

Entrez GeneID [7019](#)

Protein Accession# [Q00059](#)

Gene Name TFAM

Gene Alias MTF1, TCF6, TCF6L1, TCF6L2, TCF6L3, mtTFA

Gene Description transcription factor A, mitochondrial

Omim ID [600438](#)

Gene Ontology [Hyperlink](#)

Gene Summary This gene encodes a mitochondrial transcription factor that is a key activator of mitochondrial transcription as well as a participant in mitochondrial genome replication. Studies in mice have demonstrated that this gene product is required to regulate the mitochondrial genome copy number and is essential for embryonic development. A mouse model for Kearns-Sayre syndrome was produced when expression of this gene was eliminated by targeted disruption in heart and muscle cells. [provided by RefSeq]

Other Designations OTTHUMP00000019633|Transcription factor 6-like 2 (mitochondrial transcription factor)|mitochondrial transcription factor A

Disease

- [Alzheimer disease](#)
- [Birth Weight](#)
- [Cardiomegaly](#)
- [Cardiovascular Diseases](#)
- [Cognition](#)
- [Diabetes Complications](#)
- [Diabetes Mellitus](#)
- [Genetic Predisposition to Disease](#)
- [Insulin Resistance](#)
- [Metabolic Syndrome X](#)
- [Neoplasms](#)
- [Obesity](#)
- [Osteoporosis](#)
- [Parkinson disease](#)
- [Psychiatric Status Rating Scales](#)