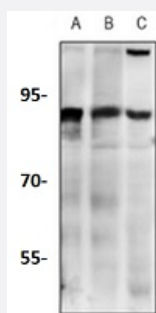


RecomAb™

CDC46 recombinant monoclonal antibody

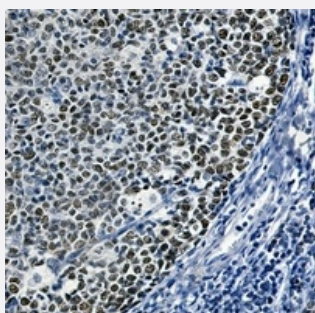
Catalog # RAB02413 Size 100 uL

Applications



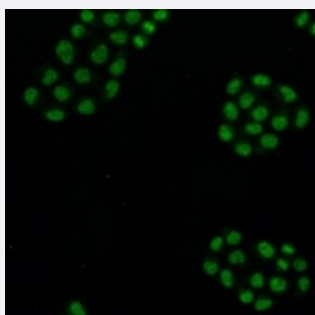
Western Blot (Cell lysate)

Western blot analysis of Jurkat (A), C6 (B), HeLa (C) whole cell lysates with CDC46 recombinant monoclonal antibody (Cat # RAB02413).



Immunohistochemistry (Formalin/PFA-fixed paraffin-embedded sections)

Immunohistochemical analysis of human tonsil formalin fixed paraffin embedded tissue section using CDC46 recombinant monoclonal antibody (Cat # RAB02413). The section was pre-treated using heat mediated antigen retrieval with sodium citrate buffer (pH 6.109). The section was then incubated with the antibody at room temperature and detected using an HRP conjugated compact polymer system. DAB was used as the chromogen. The section was then counterstained with haematoxylin and mounted with DPX.



Immunofluorescence

Immunofluorescent analysis of HeLa cells with CDC46 recombinant monoclonal antibody (Cat # RAB02413). Formalin-fixed cells were permeabilized with 0.1% Triton X-100 in TBS for 5-10 minutes and blocked with 3% BSA-PBS for 30 minutes at room temperature. Cells were probed with the primary antibody in 3% BSA-PBS and incubated overnight at 4 °C in a humidified chamber. Cells were washed with PBST and incubated with a AF488-conjugated secondary antibody (green) in PBS at room temperature in the dark.

Specification

Product Description	Rabbit recombinant monoclonal antibody raised against recombinant CDC46.
Antibody Species	Rabbit
Immunogen	Original antibody is raised against a synthetic peptide of human MCM5.
Theoretical MW (kDa)	92
Reactivity	Human, Rat
Specificity	Recognizes endogenous levels of CDC46 protein.
Form	Liquid
Purification	Immunogen affinity chromatography
Isotype	IgG
Recommend Usage	Immunocytochemistry (1:50-1:100) Immunofluorescence (1:50-1:100) Immunohistochemistry (1:50-1:100) Immunoprecipitation(1:10-1:50) Western Blot (1:500-1:1000)
Storage Buffer	In 50mM Tris-Glycine, pH 7.4 (0.15M NaCl, 50% Glycerol, 0.01% Sodium azide and 0.05% BSA)
Storage Instruction	Store at 4°C short term. Aliquot and store at -20°C long term. Avoid freeze-thaw cycles.
Note	This product contains sodium azide: a POISONOUS AND HAZARDOUS SUBSTANCE which should be handled by trained staff only.

Applications

- Western Blot (Cell lysate)

Western blot analysis of Jurkat (A), C6 (B), Hela (C) whole cell lysates with CDC46 recombinant monoclonal antibody (Cat # RAB02413).

- Immunohistochemistry (Formalin/PFA-fixed paraffin-embedded sections)

Immunohistochemical analysis of human tonsil formalin fixed paraffin embedded tissue section using CDC46 recombinant monoclonal antibody (Cat # RAB02413). The section was pre-treated using heat mediated antigen retrieval with sodium citrate buffer (pH 6.109). The section was then incubated with the antibody at room temperature and detected using an HRP conjugated compact polymer system. DAB was used as the chromogen. The section was then counterstained with haematoxylin and mounted with DPX.

- Immunocytochemistry

- Immunofluorescence

Immunofluorescent analysis of HeLa cells with CDC46 recombinant monoclonal antibody (Cat # RAB02413). Formalin-fixed cells were permeabilized with 0.1% Triton X-100 in TBS for 5-10 minutes and blocked with 3% BSA-PBS for 30 minutes at room temperature. Cells were probed with the primary antibody in 3% BSA-PBS and incubated overnight at 4 °C in a humidified chamber. Cells were washed with PBST and incubated with a AF488-conjugated secondary antibody (green) in PBS at room temperature in the dark.

- Immunoprecipitation

Gene Info — MCM5

Entrez GeneID [4174](#)

Protein Accession# [P33992](#)

Gene Name MCM5

Gene Alias CDC46, MGC5315, P1-CDC46

Gene Description minichromosome maintenance complex component 5

Omim ID [602696](#)

Gene Ontology [Hyperlink](#)

Gene Summary The protein encoded by this gene is structurally very similar to the CDC46 protein from *S. cerevisiae*, a protein involved in the initiation of DNA replication. The encoded protein is a member of the MCM family of chromatin-binding proteins and can interact with at least two other members of this family. The encoded protein is upregulated in the transition from the G0 to G1/S phase of the cell cycle and may actively participate in cell cycle regulation. [provided by RefSeq]

Other Designations DNA replication licensing factor|MCM5 minichromosome maintenance deficient 5, cell division cycle 46|minichromosome maintenance deficient 5 (cell division cycle 46)

Pathway

- [Cell cycle](#)
- [DNA replication](#)

Disease

- [Genetic Predisposition to Disease](#)
- [Kidney Failure](#)